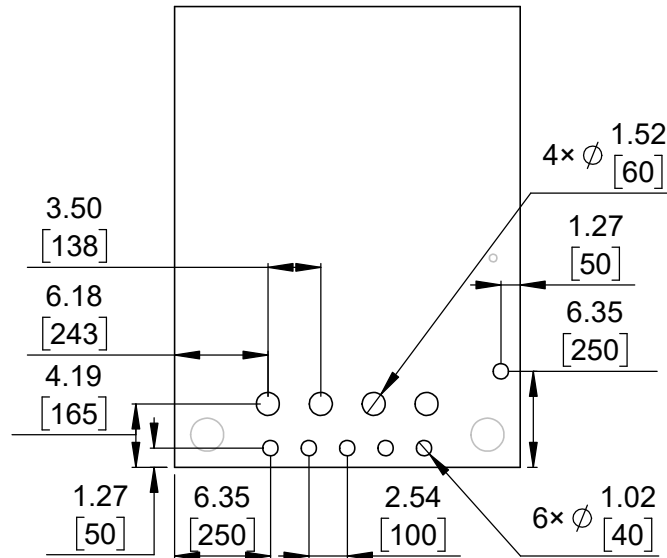
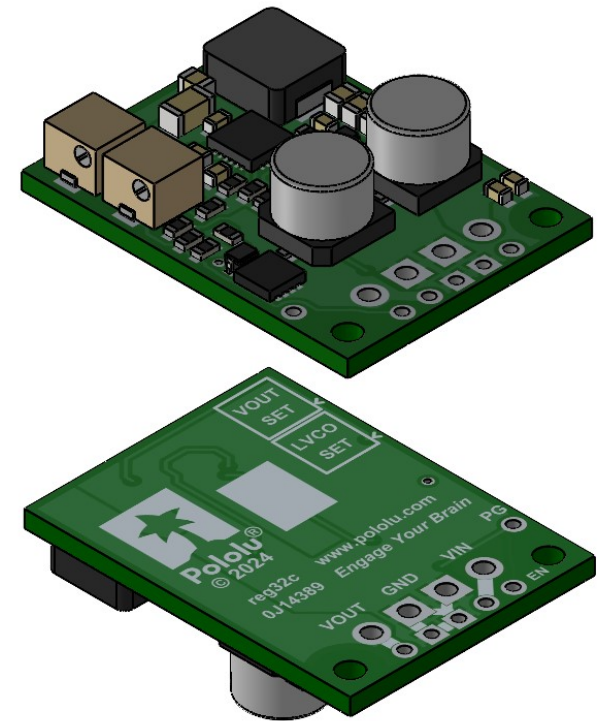


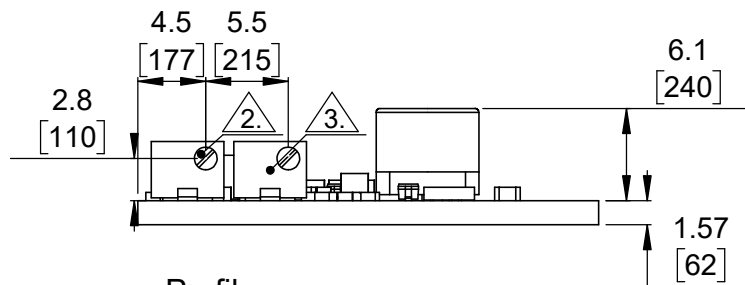
① Board dimensions (top view)  
Scale 2:1



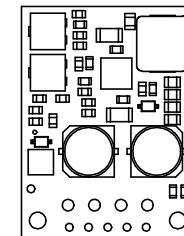
② Connector callouts (bottom view)  
Scale 2:1



③ Isometric view  
Scale 2:1




④ Profile  
Scale 2:1



⑤ Actual size  
Scale 1:1

- ①. Intended for M2 or #2 screws.
- ②. Trimmer adjustment slot is 1.5 [60] × 0.6 [22].
- ③. Some products covered by this diagram do not have this trimmer potentiometer populated.
- 4. To get the specified scale, select 100% in print settings.
- 5. Drill location tolerance: ±0.1 [±5].
- 6. Board edge tolerance: ±0.3 [±10].

<https://www.pololu.com/category/310>

Name: D30V33Max Fine-Adjust Step-down Voltage Regulators		Item number: 4852-4857
Drawing date: 8 March 2024	Dev code: reg32c	 © 2024 Pololu Corporation
Units: mm [mil]	Material: mixed	