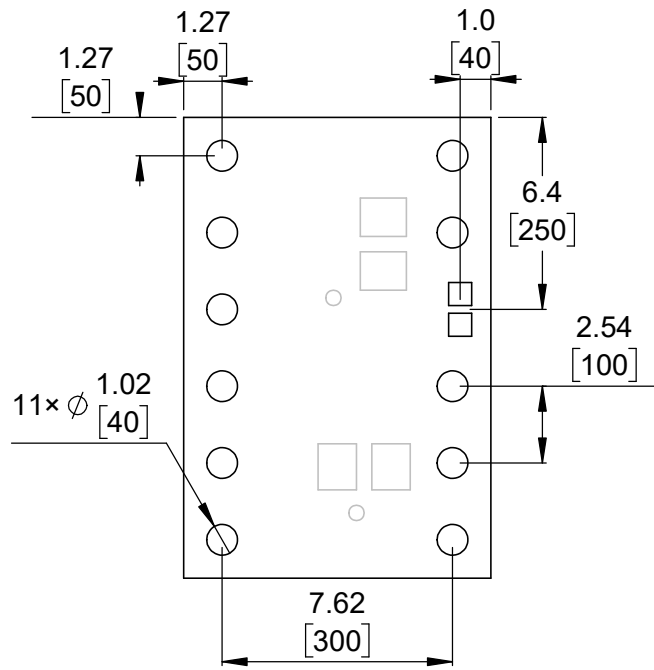
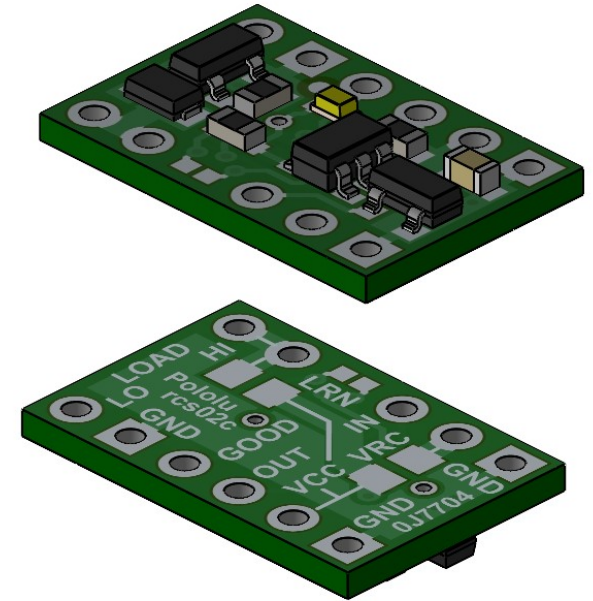


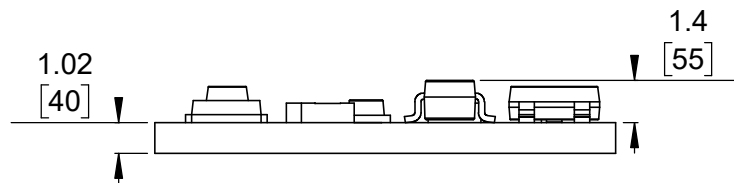
① Board dimensions (top view)
Scale 4:1



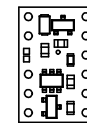
② Connector callouts (bottom view)
Scale 4:1



③ Isometric view
Scale 4:1



④ Profile
Scale 4:1



⑤ Actual size
Scale 1:1

- To get the specified scale, select 100% in print settings.
- Drill location tolerance: ± 0.1 [± 5].
- Board edge tolerance: ± 0.3 [± 10].

<https://www.pololu.com/product/2802>

Name: Pololu RC Switch with Small Low-Side MOSFET		Item number: 2802	
Drawing date: 10 January 2024		Dev code: rcs02c	
Units: mm [mil]	Material: mixed		

