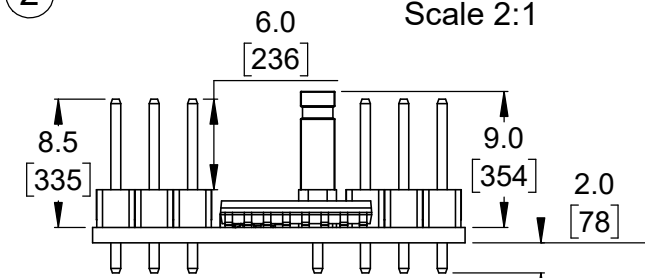
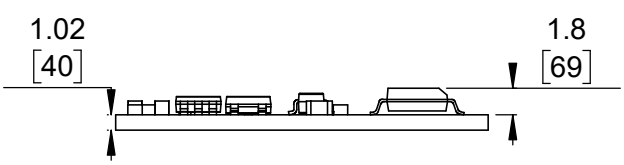


① Board dimensions (top view)
Scale 2:1

② Connector callouts (bottom view)
Scale 2:1

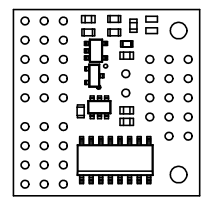
③ Isometric view
Scale 2:1



④ Profile
Scale 2:1

⑤ Profile with headers
Scale 2:1

⑥ Actual size
Scale 1:1



- 1. Intended for #2 and M2 screws.
- 2. Grid lines indicate 2.54 mm [100 mil] spacing.
- 3. To get the specified scale, select 100% in print settings.
- 4. Drill location tolerance: ± 0.1 [± 5].
- 5. Board edge tolerance: ± 0.3 [± 10].

https://www.pololu.com/product/2806	
Name: Pololu 4-Channel RC Servo Multiplexer	Item number: 2806, 2807
Drawing date: 5 January 2024	Dev code: rcm01b
Units: mm [mil]	Material: mixed

