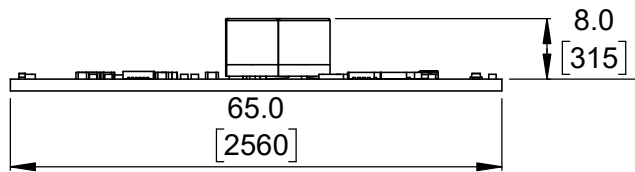


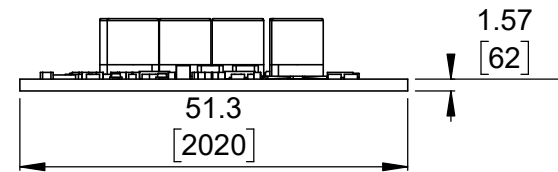
① Actual size
Scale 1:1



③ Long profile
Scale 1:1




② Isometric view
Scale 1:1

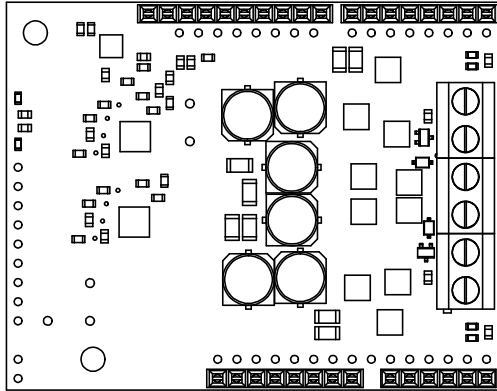


④ Short profile
Scale 1:1

1. Surface-mount components vary between models.
2. To get the specified scale, select 100% in print settings.
3. Drill location tolerance: ± 0.1 [± 5].
4. Board edge tolerance: ± 0.3 [± 10].

<https://www.pololu.com/catalog/category/291>

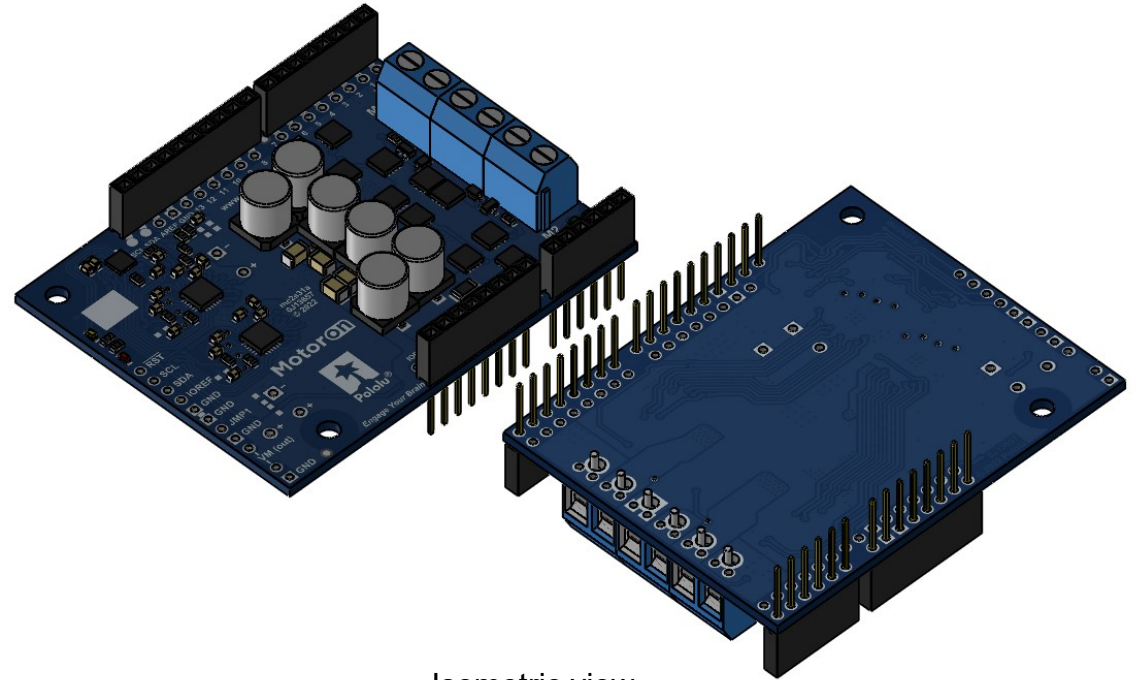
Name: Motoron Dual High-Power Motor Controller Shield for Arduino		Item number: 5036-5047
Drawing date: 5 August 2022	Dev code: mc2s31a, mc2s31b	 © 2022 Pololu Corporation
Units: mm [mil]	Material: mixed	



Actual size
(with included through-hole components)

1

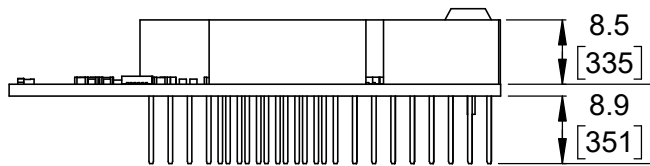
Scale 1:1



Isometric view
(with included through-hole components)

2

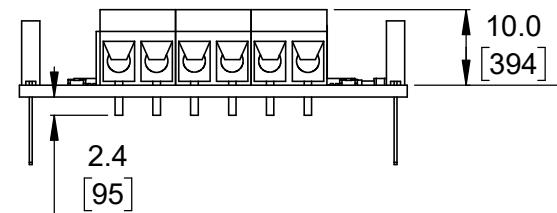
Scale 1:1



Long profile
(with included through-hole components)

3

Scale 1:1




Short profile
(with included through-hole components)

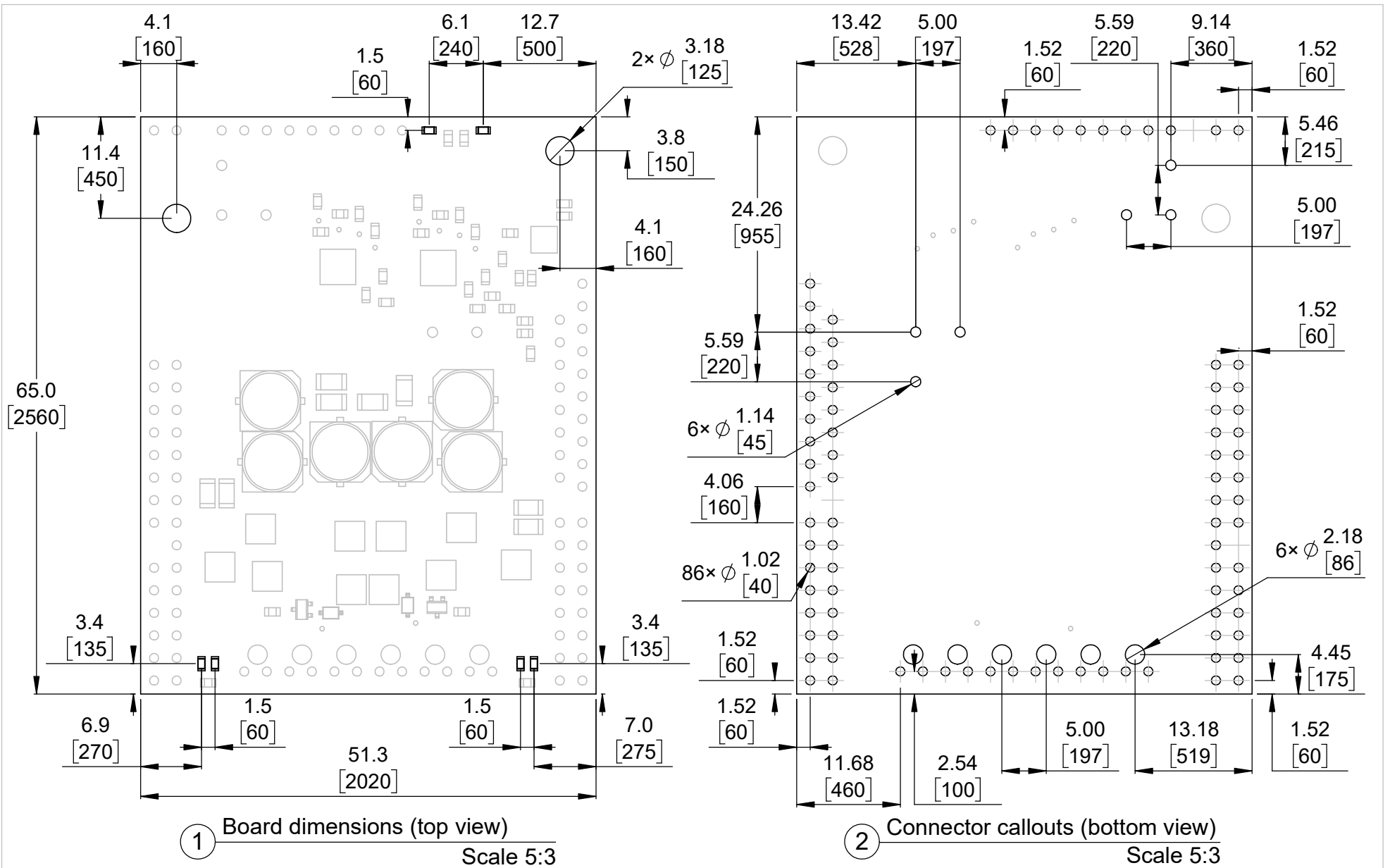
4

Scale 1:1

1. Surface-mount components vary between models.
2. To get the specified scale, select 100% in print settings.
3. Drill location tolerance: ± 0.1 [± 5].
4. Board edge tolerance: ± 0.3 [± 10].


<https://www.pololu.com/catalog/category/291>

Name: Motoron Dual High-Power Motor Controller Shield for Arduino		Item number: 5036-5047
Drawing date: 5 August 2022	Dev code: mc2s31a, mc2s31b	 © 2022 Pololu Corporation
Units: mm [mil]	Material: mixed	



1. Intended for M3 or #4 screws.
2. Grid lines indicate 2.54mm [100 mil] spacing.
3. Surface-mount components vary between models.
4. To get the specified scale, select 100% in print settings.
5. Drill location tolerance: ±0.1 [±5].
6. Board edge tolerance: ±0.3 [±10].

<https://www.pololu.com/catalog/category/291>

Name: Motoron Dual High-Power Motor Controller Shield for Arduino		Item number: 5036-5047
Drawing date: 5 August 2022	Dev code: mc2s31a, mc2s31b	 © 2022 Pololu Corporation
Units: mm [mil]	Material: mixed	