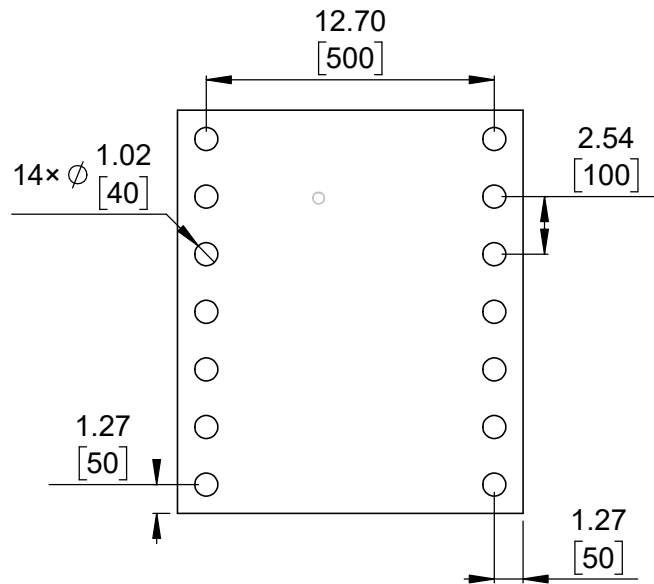
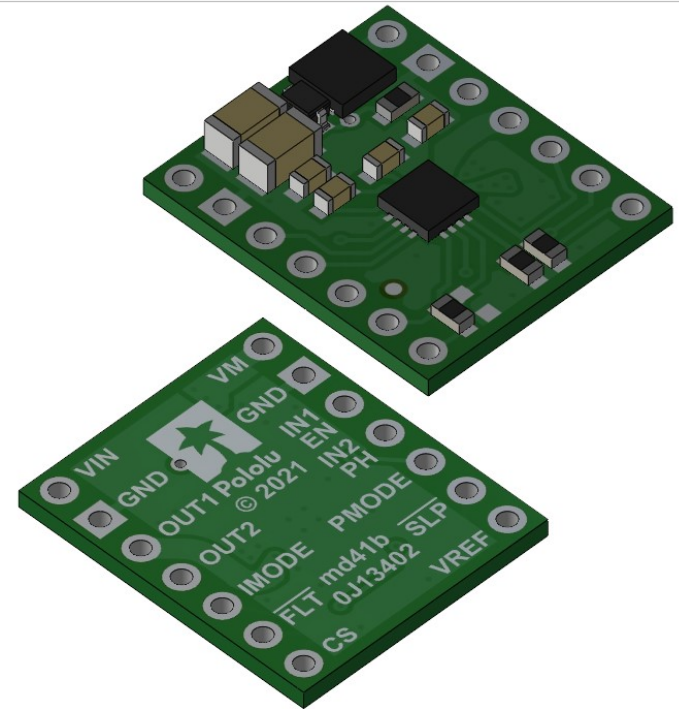


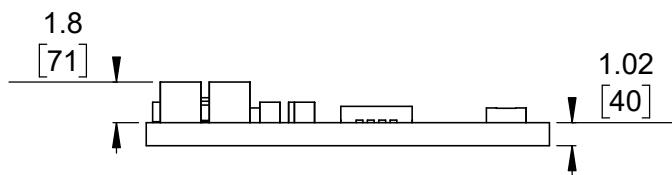
① Board dimensions (top view)  
Scale 3:1



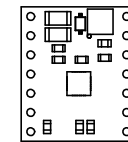
② Connector callouts (bottom view)  
Scale 3:1



③ Isometric view  
Scale 3:1




④ Profile  
Scale 3:1



⑤ Actual size  
Scale 1:1

1. To get the specified scale, select 100% in print settings.
2. Drill location tolerance:  $\pm 0.1$  [ $\pm 5$ ].
3. Board edge tolerance:  $\pm 0.3$  [ $\pm 10$ ].

<https://www.pololu.com/product/4037>

Name: DRV8876 (QFN) Single Brushed DC Motor Driver Carrier		Item number: 4037
Drawing date: 14 April 2022	Dev code: md41b	 © 2022 Pololu Corporation
Units: mm [mil]	Material: mixed	