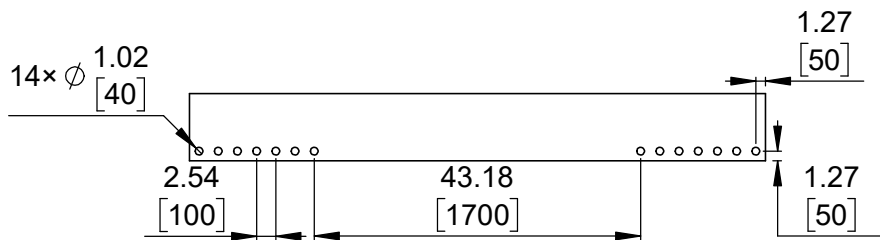
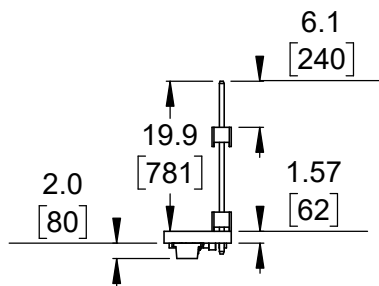


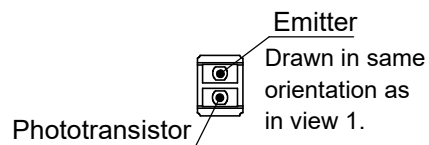
① Board dimensions (top view)
Scale 1:1



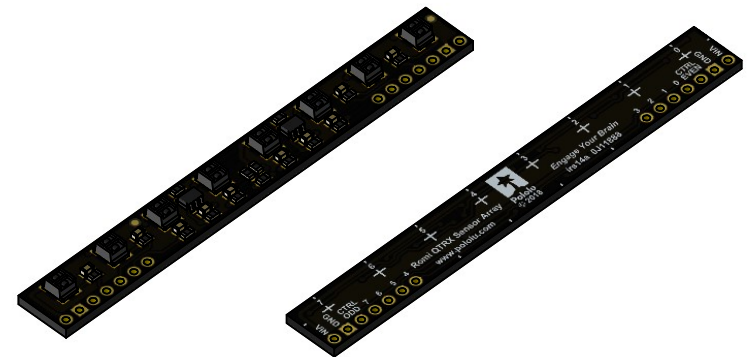
② Connector callouts (bottom view)
Scale 1:1



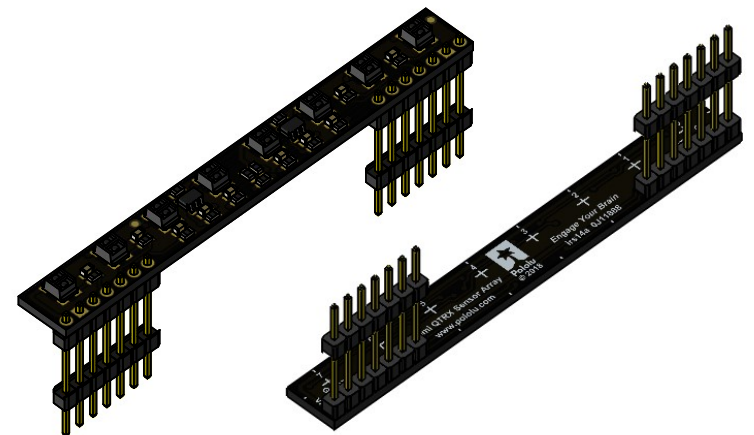
③ Profile (with through hole connectors)
Scale 1:1



④ QTRX/QTRXL sensor
Scale 2:1




⑤ Isometric view
Scale 1:1



⑥ Isometric view (with through hole connectors)
Scale 1:1

1. To get the specified scale, select 100% in print settings.
2. Drill location tolerance: ± 0.1 [± 5].
3. Board edge tolerance: ± 0.3 [± 10].

<https://www.pololu.com/product/3672>

Name: 8-Channel QTRX Sensor Array for Romi/TI-RSLK		Item number: 3672
Drawing date: 14 May 2019	Dev code: irs14a	 Pololu Robotics & Electronics © 2019 Pololu Corporation
Units: mm [mil]	Material: mixed	