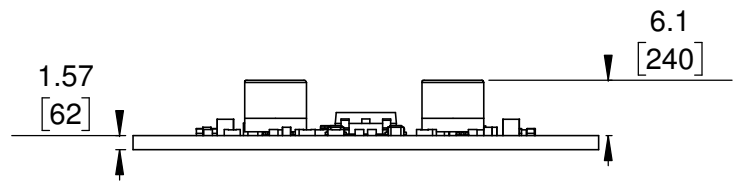


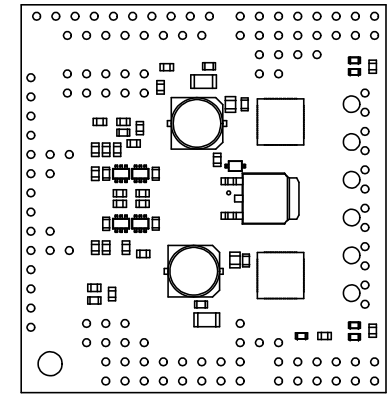
① Board dimensions (top view)
Scale 6:5

② Connector callouts (bottom view)
Scale 6:5

③ Isometric view
Scale 1:1



④ Profile
Scale 6:5



⑤ Actual size
Scale 1:1

- 1. Intended for M3 or #4-40 screws.
- 2. Grid lines indicate 2.54 mm [100 mil] spacing.
- 3. To get the specified scale, select 100% in print settings.
- 4. Drill location tolerance: ±0.1 [±5].
- 5. Board edge tolerance: ±0.3 [±10].

https://www.pololu.com/product/2520	
Name: Dual TB9051FTG Motor Driver Shield for Arduino	Item number: 2520
Drawing date: 13 July 2018	Dev code: ash08a
Units: mm [mil]	Material: mixed

