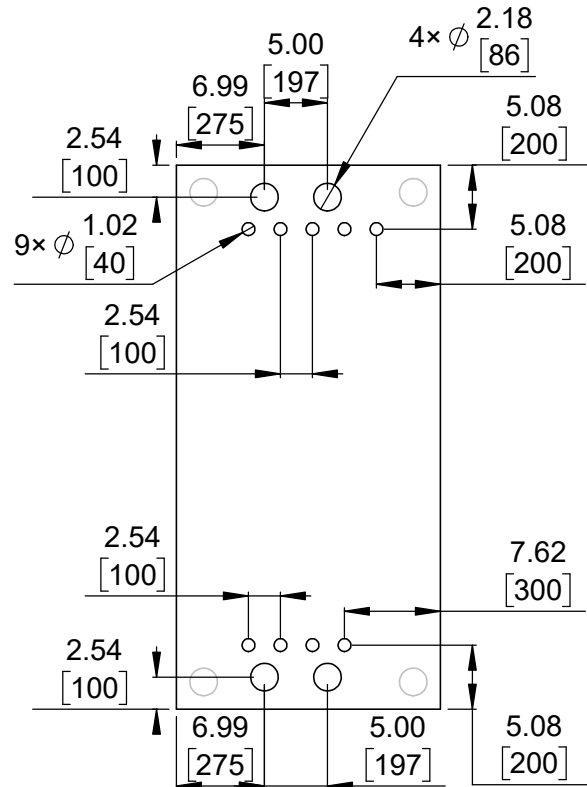
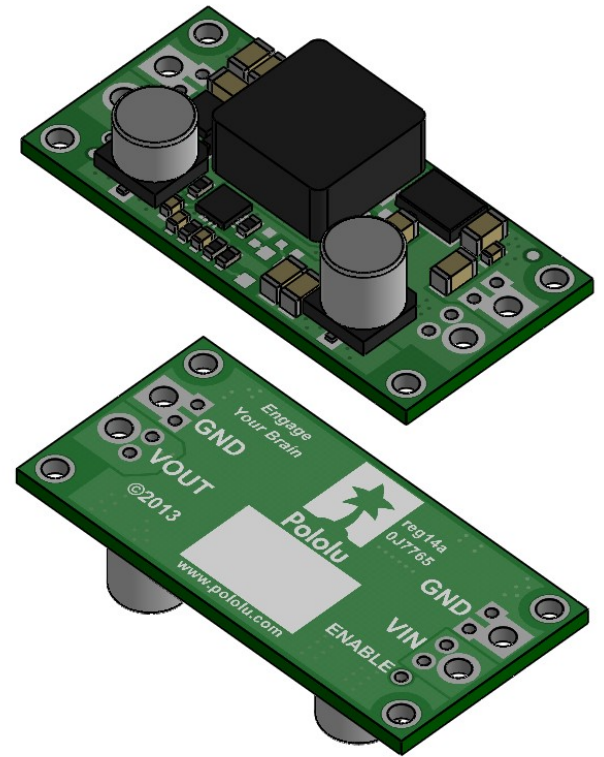


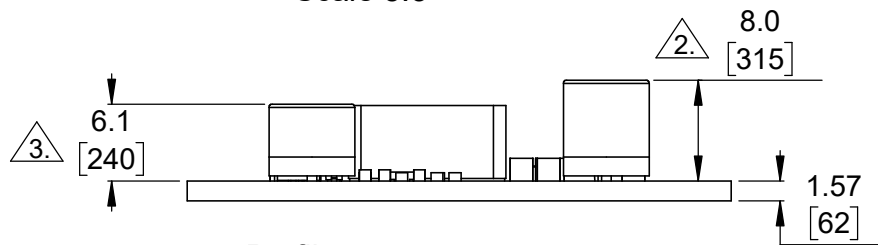
1 Board dimensions (top view)
Scale 5:3



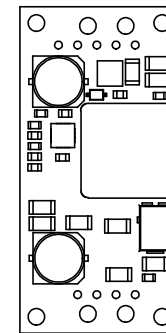
2 Connector callouts (bottom view)
Scale 5:3



3 Isometric view
Scale 5:3



4 Profile
Scale 5:3




5 Actual size
Scale 1:1

1. Intended for #2-56 screws.

2. Height of capacitor above the board is 6.1 mm [240 mil] for S18V20AHV (item #2573) manufactured after December 2014 and for all S18V20F24 (item #2582).
3. Height of capacitor above the board is 8.0 mm [315 mil] for boards manufactured prior to December 2014.

4. To get the specified scale, select 100% in print settings.
5. Drill location tolerance: ± 0.1 [± 5].
6. Board edge tolerance: ± 0.3 [± 10].

<https://www.pololu.com/category/146/s18v20x-step-up-step-down-voltage-regulators>

Name: Pololu Step-Up/Step-Down Voltage Regulators S18V20x		Item number: 2572-2577, 2582
Drawing date: 13 February 2019	Dev code: reg14a	 Pololu Robotics & Electronics © 2019 Pololu Corporation
Units: mm [mil]	Material: mixed	