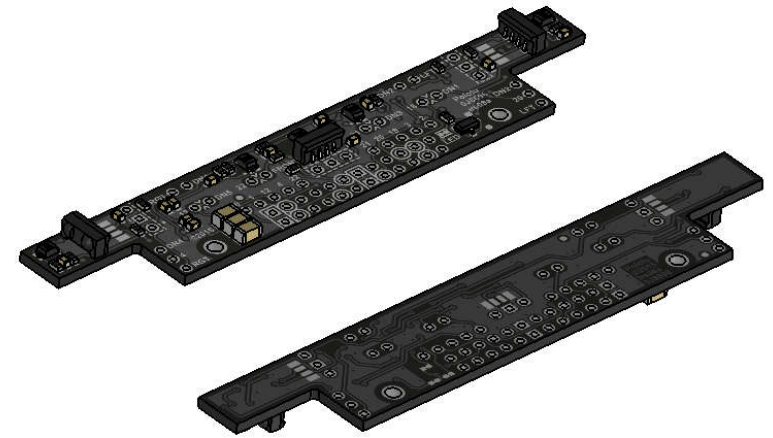
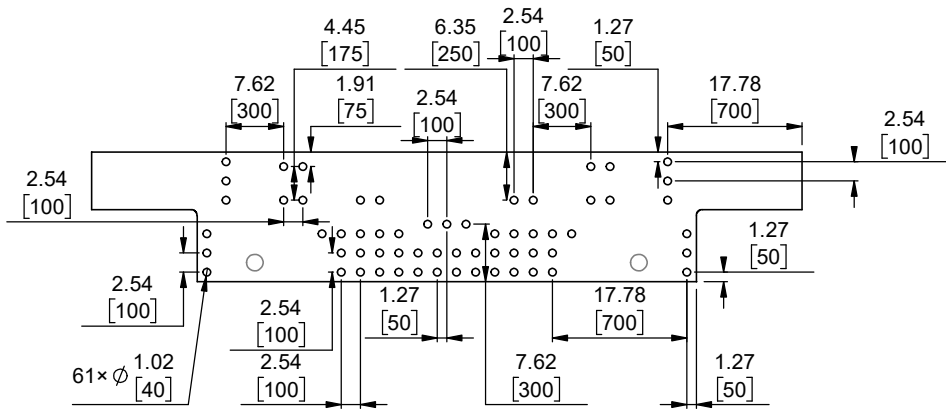


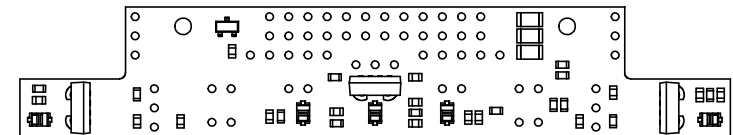
1 Board dimensions (top view)
Scale 1:1



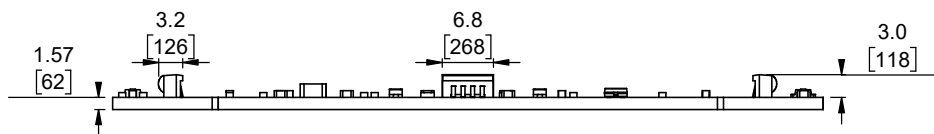
4 Isometric view
Scale 1:1



2 Connector callouts (bottom view)
Scale 1:1




5 Actual size
Scale 1:1



3 Profile
Scale 1:1

1. To get the specified scale, select 100% in print settings.
2. Drill location tolerance: ± 0.1 [± 5].
3. Board edge tolerance: ± 0.3 [± 10].

<https://www.pololu.com/product/3122>

Name: Zumo 32U4 Front Sensor Array		Item number: 3122
Drawing date: 27 June 2017	Dev code: irs08a	 Pololu Robotics & Electronics © 2017 Pololu Corporation
Units: mm [mil]	Material: mixed	