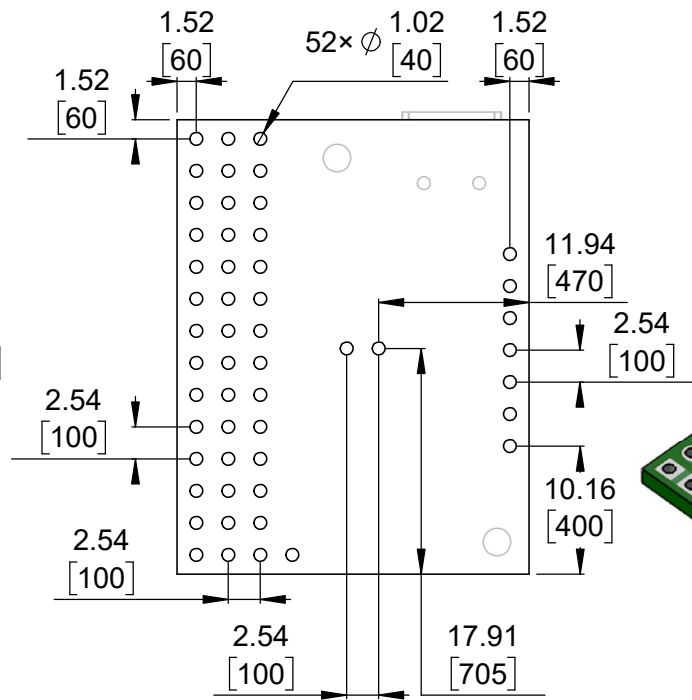
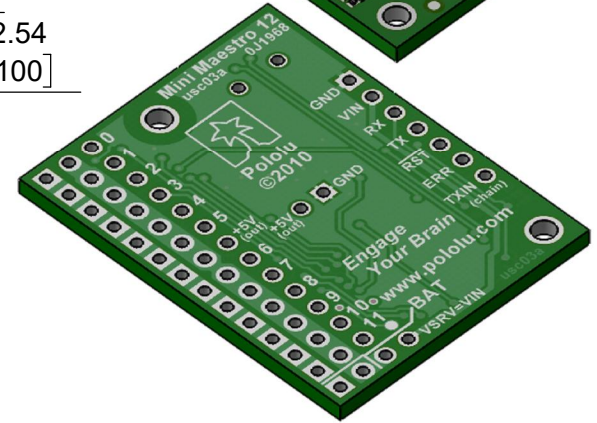
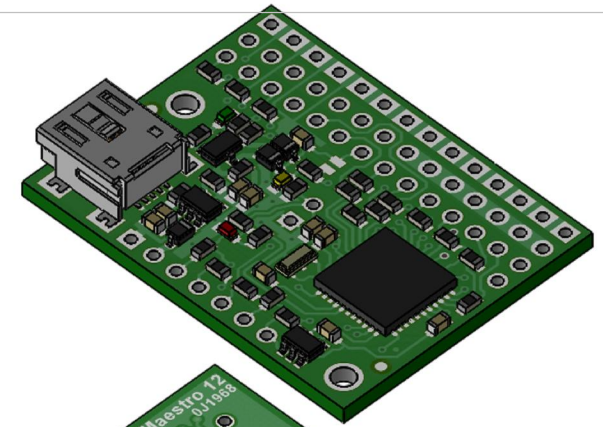


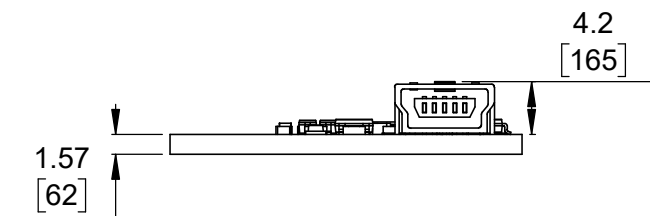
① Board dimensions (top view)
Scale 5:3



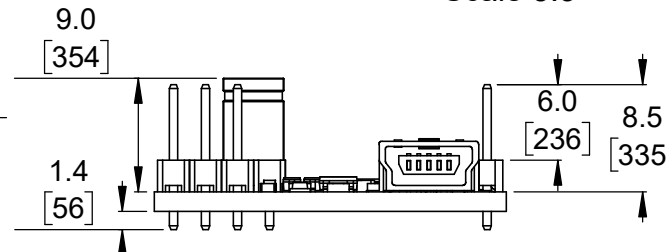
② Connector callouts (bottom view)
Scale 5:3



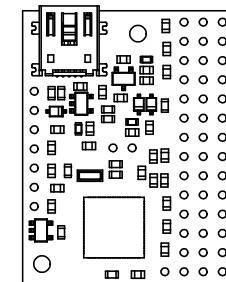
③ Isometric view
Scale 5:3



④ Profile
Scale 5:3



⑤ Profile (with through-hole connectors)
Scale 5:3



⑥ Actual size
Scale 1:1

1. To get the specified scale, select 100% in print settings.
2. Drill location tolerance: ± 0.1 [± 5].
3. Board edge tolerance: ± 0.3 [± 10].

<https://www.pololu.com/product/1352>

Name: Mini Maestro 12-Channel USB Servo Controller		Item number: 1352,1353
Drawing date: 10 July 2017	Dev code: usc03a	 © 2017 Pololu Corporation
Units: mm [mil]	Material: mixed	