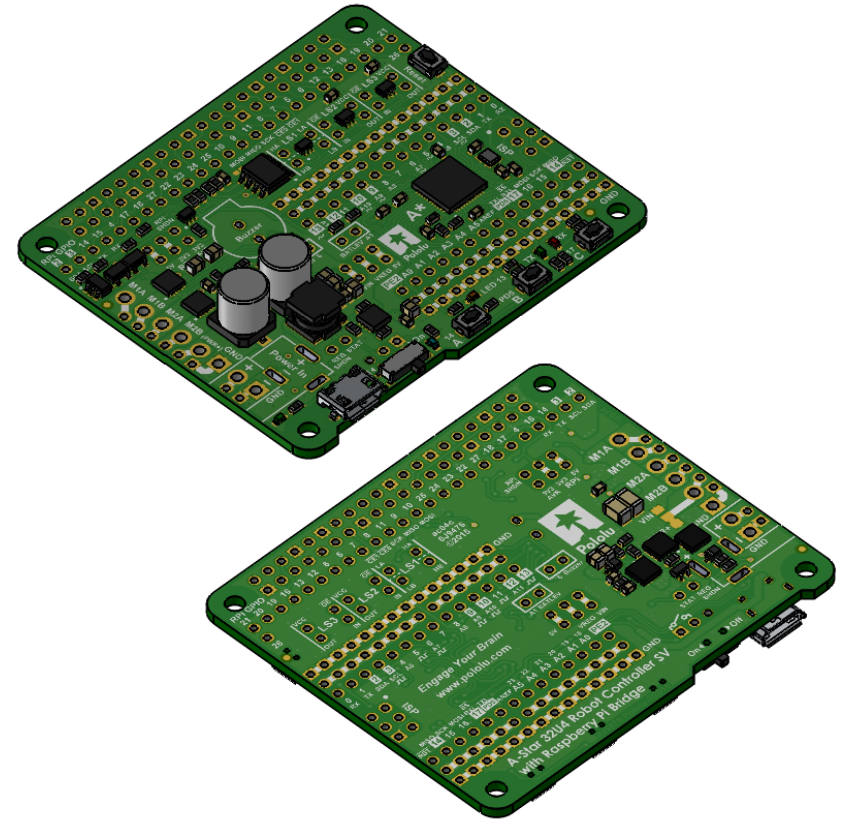
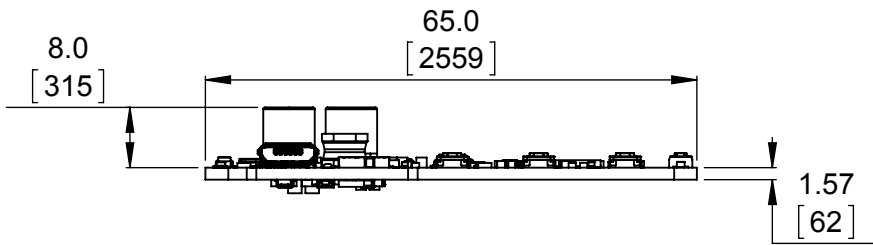


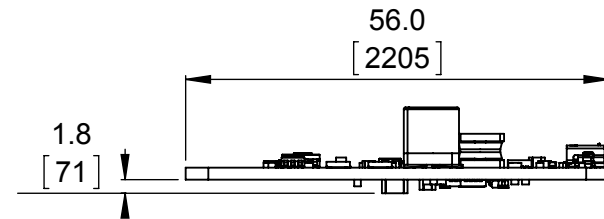
① Top view (actual size)
Scale 1:1



② Isometric view
Scale 1:1




③ Long profile
Scale 1:1

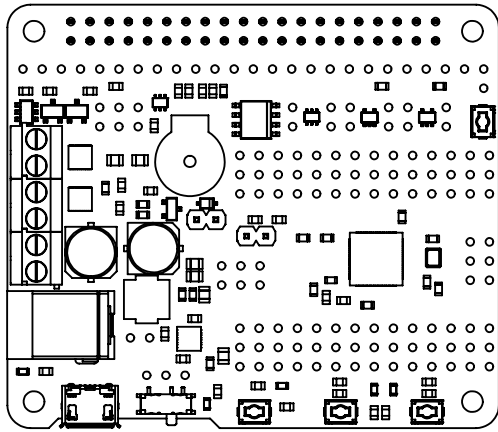


④ Short profile
Scale 1:1

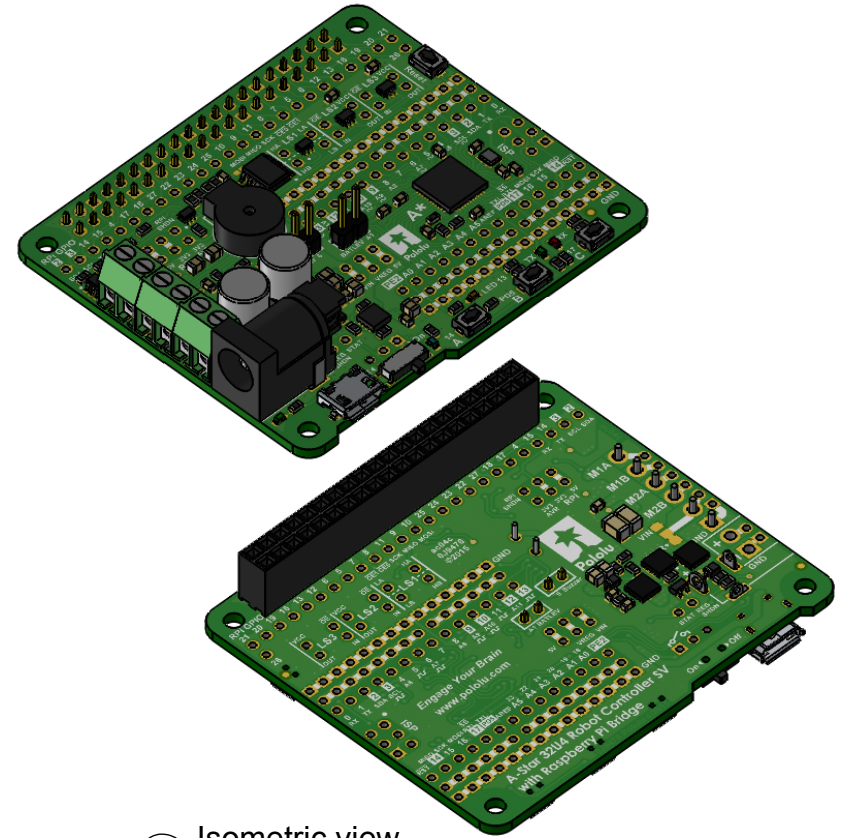
1. To get the specified scale, select 100% in print settings.
2. Drill location tolerance: ± 0.1 [± 5].
3. Board edge tolerance: ± 0.3 [± 10].

<https://www.pololu.com/product/3118>

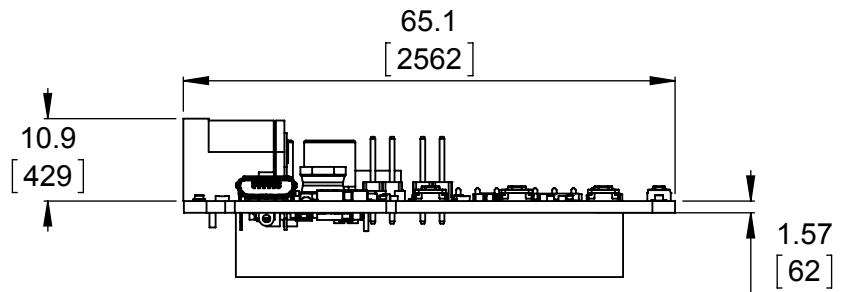
Name: A-Star 32U4 Robot Controller SV with Raspberry Pi Bridge (SMT components only)		Item number: 3118
Drawing date: 2 March 2016		
Units: mm [mil]	PCB dev code: ac04c	
 © 2016 Pololu Corporation		



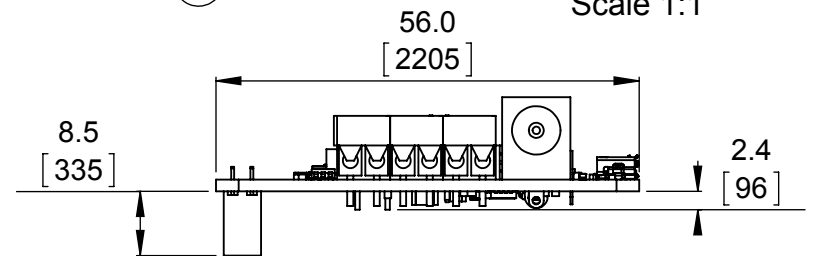
1 Top view (actual size)
Scale 1:1



2 Isometric view
Scale 1:1



3 Long profile
Scale 1:1



4 Short profile
Scale 1:1

1. To get the specified scale, select 100% in print settings.
2. Drill location tolerance: ± 0.1 [± 5].
3. Board edge tolerance: ± 0.3 [± 10].

<https://www.pololu.com/product/3119>

Name:
A-Star 32U4 Robot Controller SV with
Raspberry Pi Bridge (assembled)

Item number:
3119

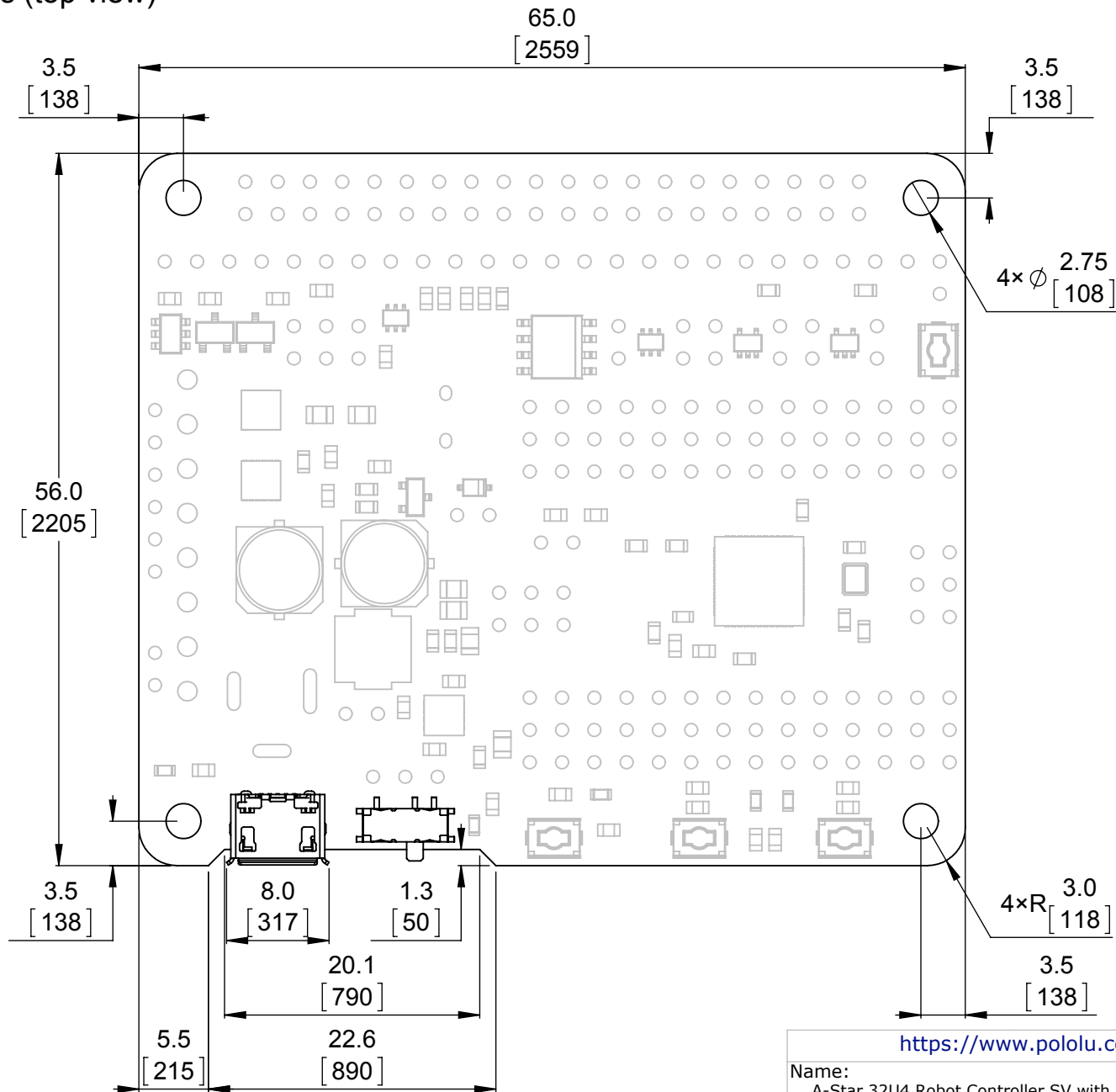
Drawing date:
2 March 2016

Units: mm
[mil]

PCB dev code:
ac04c

Pololu
Robotics & Electronics
© 2016 Pololu Corporation


Board dimensions (top view)



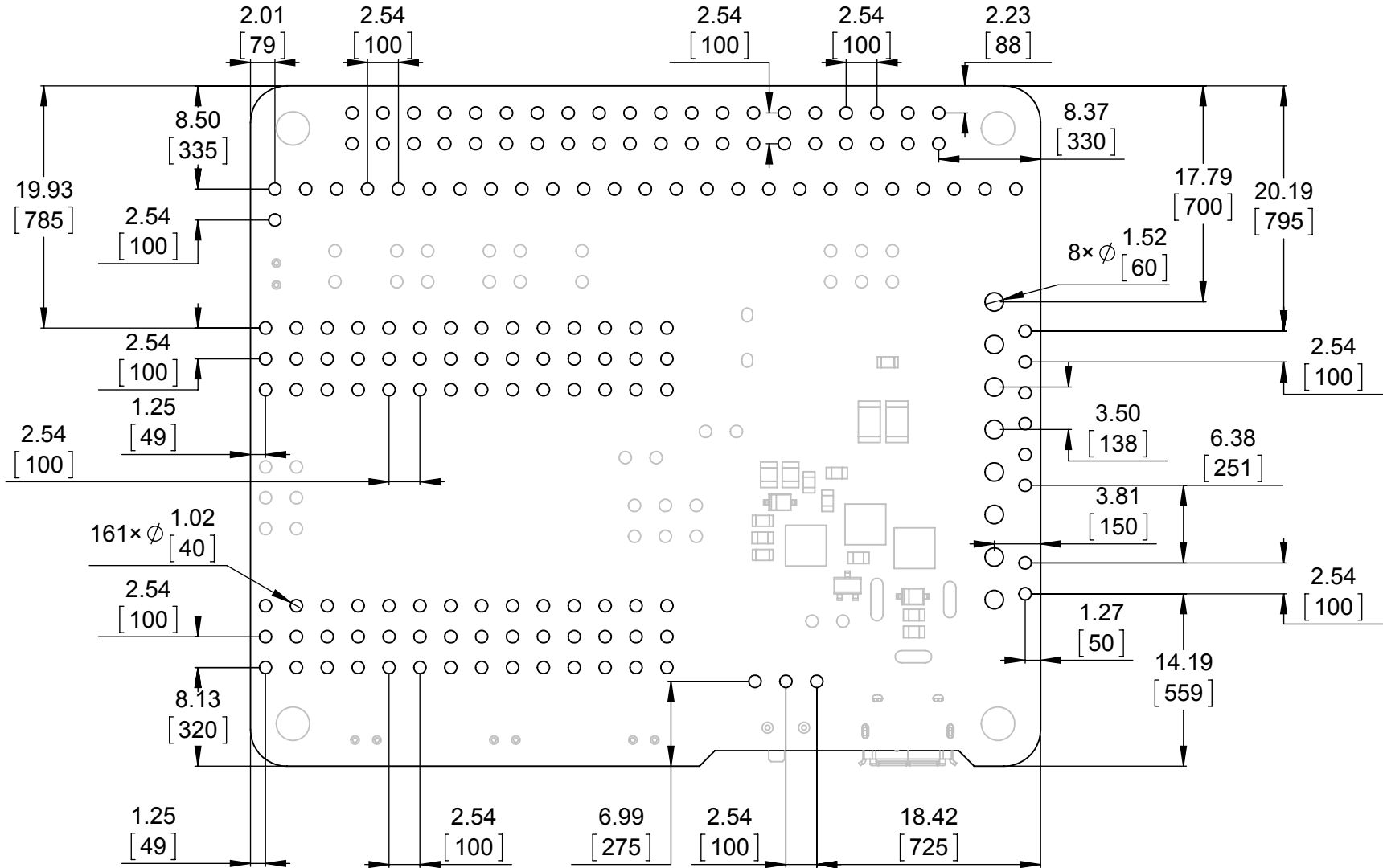
1. To get the specified scale, select 100% in print settings.
2. Drill location tolerance: ± 0.1 [± 5].
3. Board edge tolerance: ± 0.3 [± 10].

Scale: 2:1

<https://www.pololu.com/product/3118>

Name: A-Star 32U4 Robot Controller SV with Raspberry Pi Bridge		Item number: 3118-3119
Drawing date: 2 March 2016		 © 2016 Pololu Corporation
Units: mm [mil]	PCB dev code: ac04c	


Connector callouts 1 (bottom view)



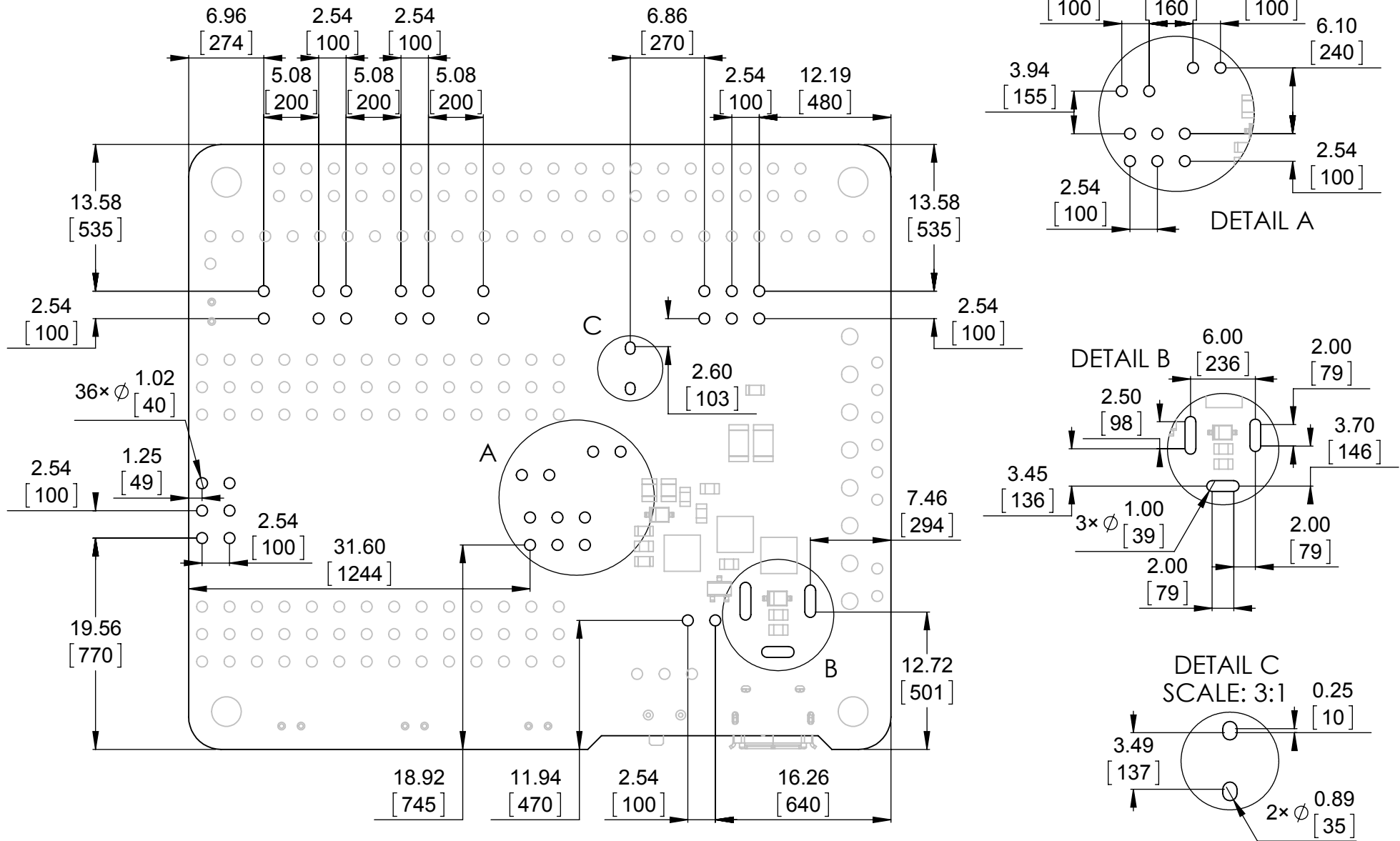
1. To get the specified scale, select 100% in print settings.
2. Drill location tolerance: ± 0.1 [± 5].
3. Board edge tolerance: ± 0.3 [± 10].

Scale: 2:1

<https://www.pololu.com/product/3118>

Name: A-Star 32U4 Robot Controller SV with Raspberry Pi Bridge		Item number: 3118-3119
Drawing date: 2 March 2016		
Units: mm [mil]	PCB dev code: ac04c	
 <p>Pololu Robotics & Electronics © 2016 Pololu Corporation</p>		


Connector callouts 2 (bottom view)



1. To get the specified scale, select 100% in print settings.
2. Drill location tolerance: ± 0.1 [± 5].
3. Board edge tolerance: ± 0.3 [± 10].

Scale: 2:1

<https://www.pololu.com/product/3118>

Name: A-Star 32U4 Robot Controller SV with Raspberry Pi Bridge		Item number: 3118-3119
Drawing date: 2 March 2016		 © 2016 Pololu Corporation
Units: mm [mil]	PCB dev code: ac04c	