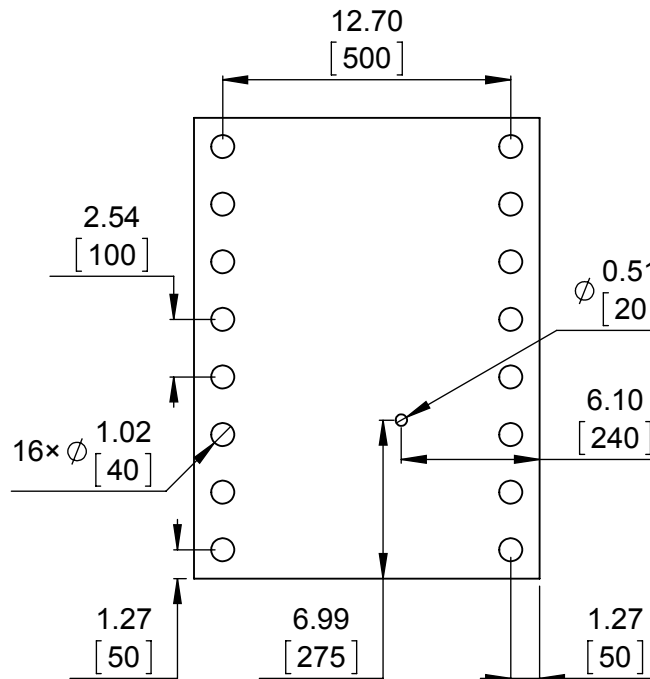
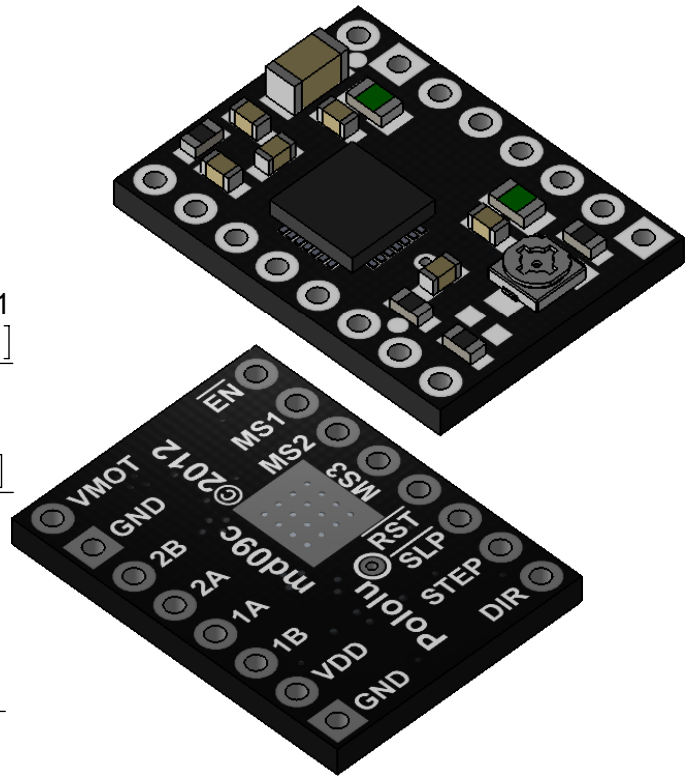


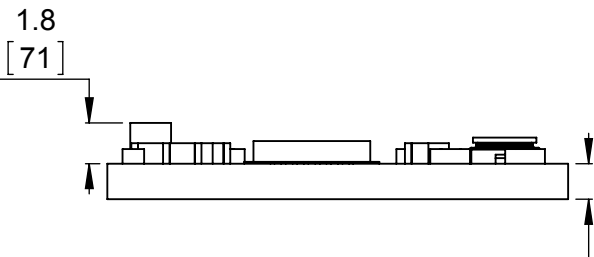
1 Board dimensions (top view)
Scale 3:1



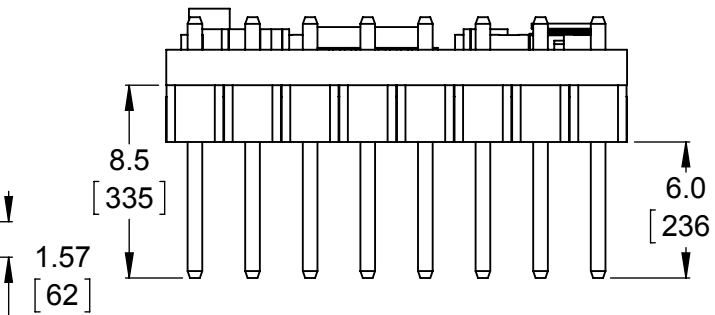
2 Connector callouts (bottom view)
Scale 3:1



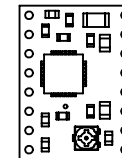
3 Isometric view
Scale 3:1



4 Profile
Scale 3:1



5 Profile with headers
Scale 3:1



6 Actual size
Scale 1:1

- To get the specified scale, select 100% in print settings.
- Drill location tolerance: ± 0.1 [± 5].
- Board edge tolerance: ± 0.3 [± 10].

<https://www.pololu.com/category/155>

Name: A4988 Stepper Motor Driver Carrier, Black Edition

Item numbers:
2128, 2976, 2981, 2986

Drawing date:

15 December 2015

Units: mm
[mil]

PCB dev code:
md09c

Pololu
Robotics & Electronics
© 2015 Pololu Corporation