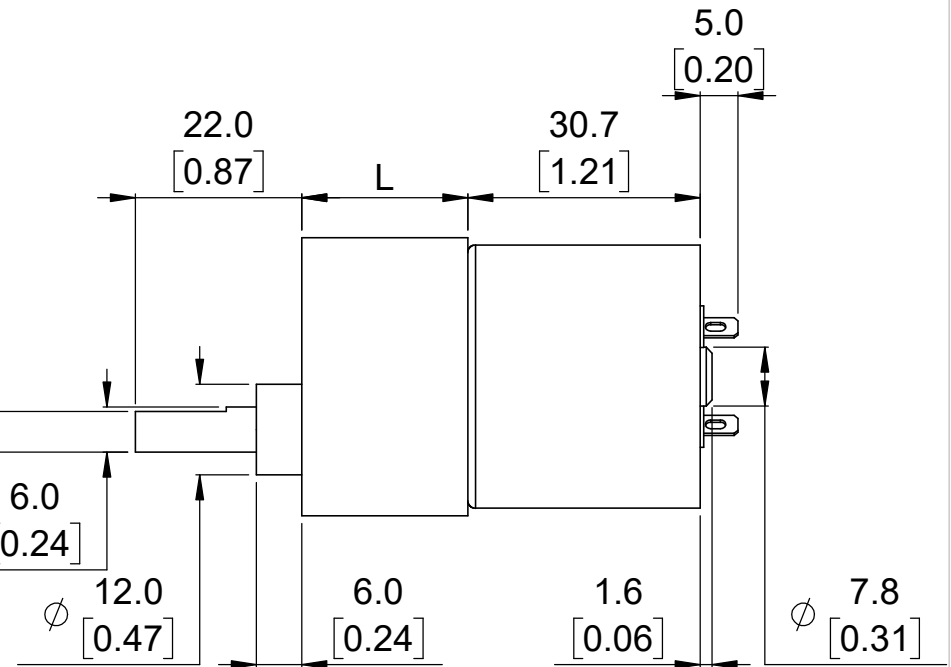
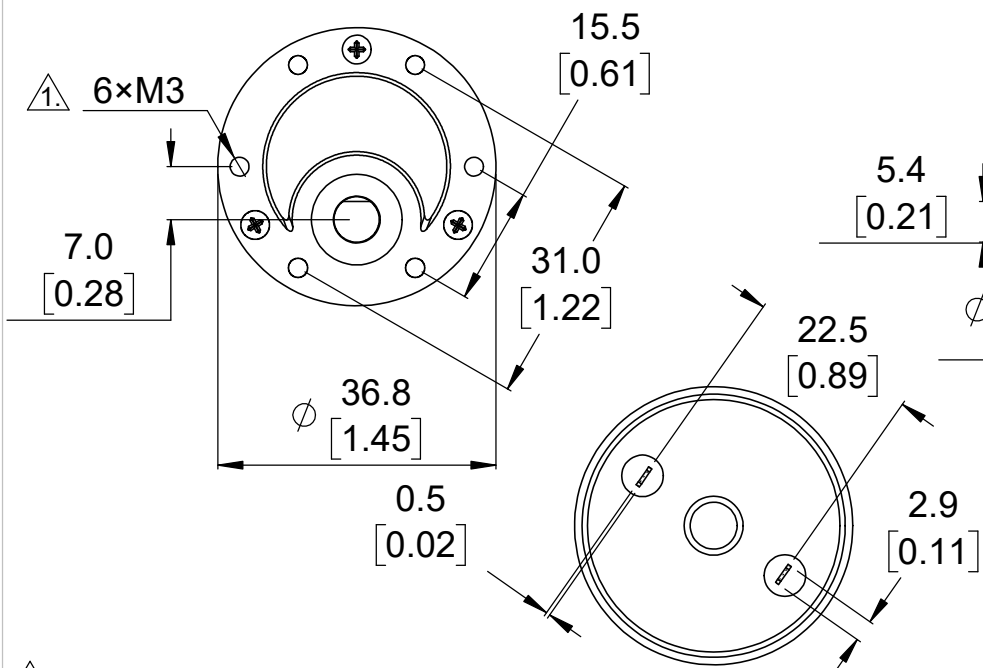
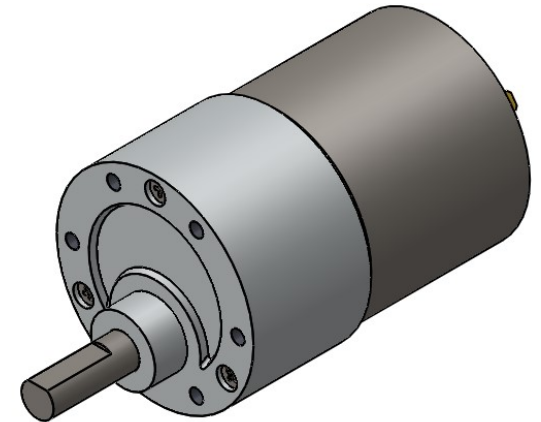


Gear ratio	L
19:1	22 mm [0.87 in]
30:1	22 mm [0.87 in]
50:1	24 mm [0.94 in]
70:1	24 mm [0.94 in]
100:1	26.5 mm [1.04 in]
131:1	26.5 mm [1.04 in]
150:1	26.5 mm [1.04 in]



1. Depth of mounting hole is 6.0 mm [0.24 in].
2. To get the specified scale, select 100% in print settings.

Scale: 1:1

<https://www.pololu.com/category/116/37d-mm-gearmotors>

Name:
37D mm Metal Gearmotors (without encoder)

Item number:
1102-1107, 2829

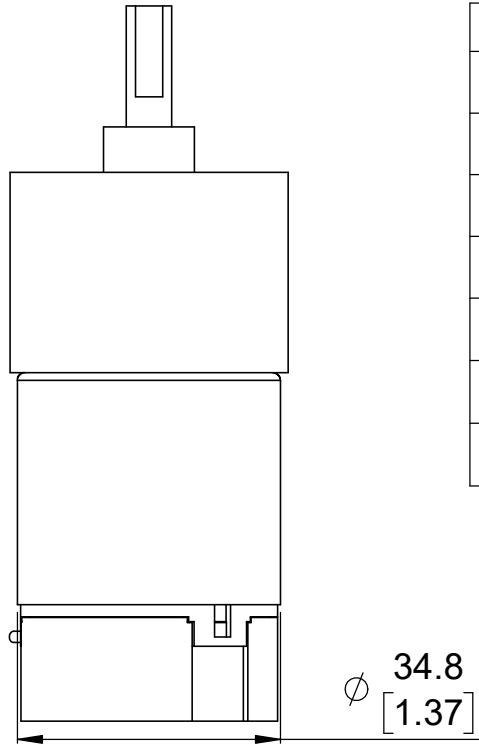
Drawing date:
02 April 2019

Dev code:
—

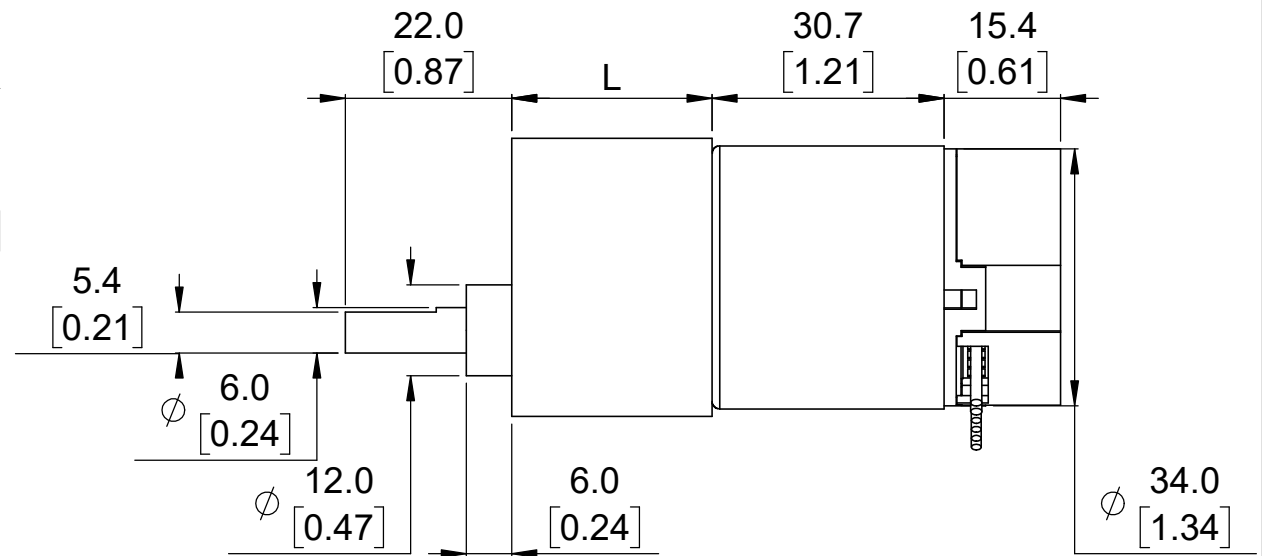
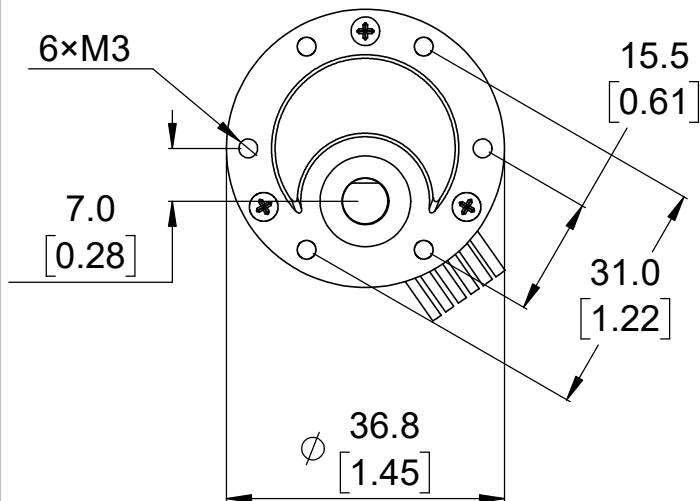
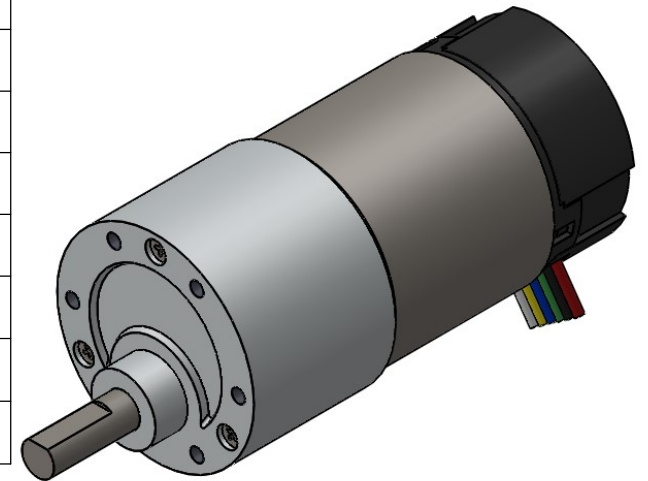
Units: mm [in]

Material:
Mixed

Pololu
Robotics & Electronics
© 2018 Pololu Corporation



Gear ratio	L
19:1	22 mm [0.87 in]
30:1	22 mm [0.87 in]
50:1	24 mm [0.94 in]
70:1	24 mm [0.94 in]
100:1	26.5 mm [1.04 in]
131:1	26.5 mm [1.04 in]
150:1	26.5 mm [1.04 in]



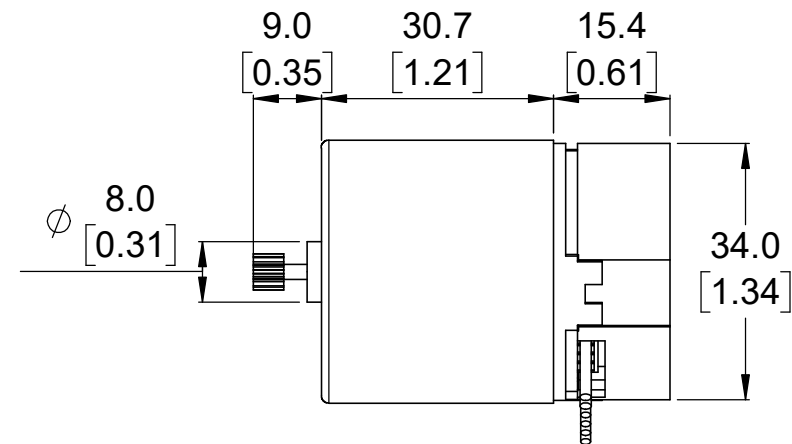
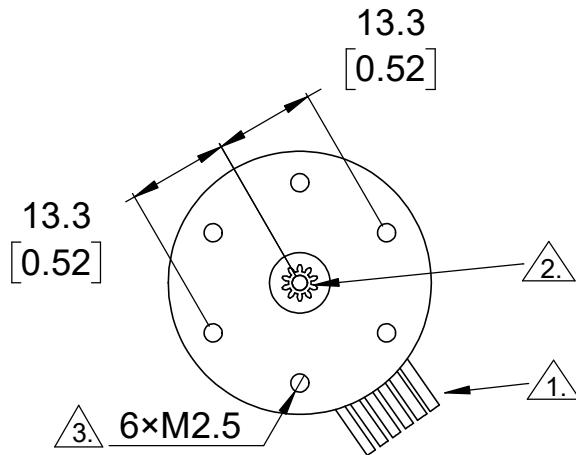
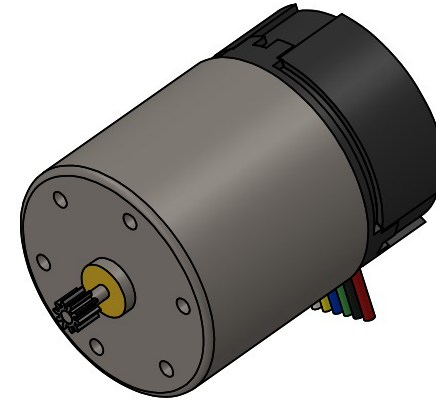
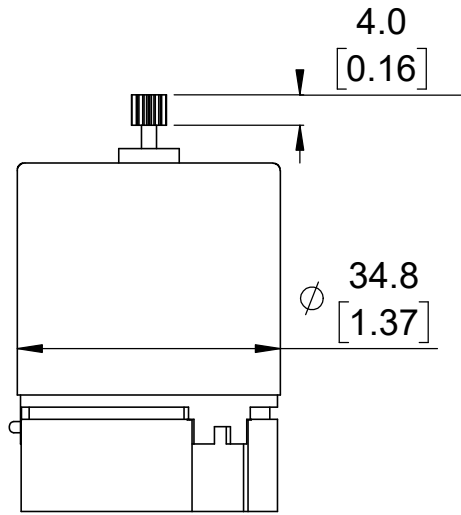
<https://www.pololu.com/category/116/37d-mm-gearmotors>

Name: 37D mm Metal Gearmotors with 64 CPR Encoder		Item number: 2822-2828
Drawing date: 02 April 2019	Dev code: —	
Units: mm [in]	Material: Mixed	



1. To get the specified scale, select 100% in print settings.

Scale: 1:1



1. Leads are approximately 200 mm [8 in] long and are terminated by a 1x6 female header with a 2.54 mm [0.1 in] pitch.



2. The non-removable pinion gear has a metric module 0.5, 10 teeth, and a 20° pressure angle.



3. Depth of mounting holes is 3.5 mm [0.14 in].



4. To get the specified scale, select 100% in print settings.

Scale 1:1

<https://www.pololu.com/product/2821>

Name: Motor with 64 CPR Encoder for 37D mm Metal Gearmotors (No Gearbox)		Item number: 2821
Drawing date: 02 April 2019	Dev code: —	
Units: mm [mil]	Material: Mixed	

