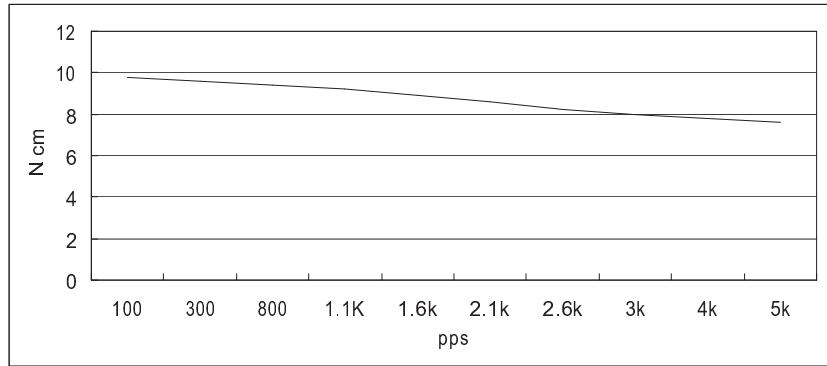


HIGH TORQUE HYBRID STEPPING MOTOR SPECIFICATIONS

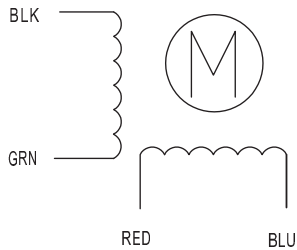
General specifications		Electrical specifications	
Step Angle (°)	1.8	Rated Voltage (V)	2.7
Temperature Rise (°C)	80 Max (rated current, 2 phase on)	Rated Current (A)	1.0
Ambient temperature (°C)	-20~+50	Resistance Per Phase ($\pm 10\% \Omega$)	2.7 (25°C)
Number of Phase	2	Inductance Per Phase ($\pm 20\% \text{mH}$)	4.3
Insulation Resistance	100M Ω , Min (500VDC)	Holding Torque (Kg.cm)	1.4
Insulation Class	Class B	Detent Torque (g.cm)	100
Max. radial force (N)	28 (20mm from the flange)	Rotor Inertia (g.cm ²)	14
Max. axial force (N)	10	Weight (Kg)	0.18

● Pull out torque curve:

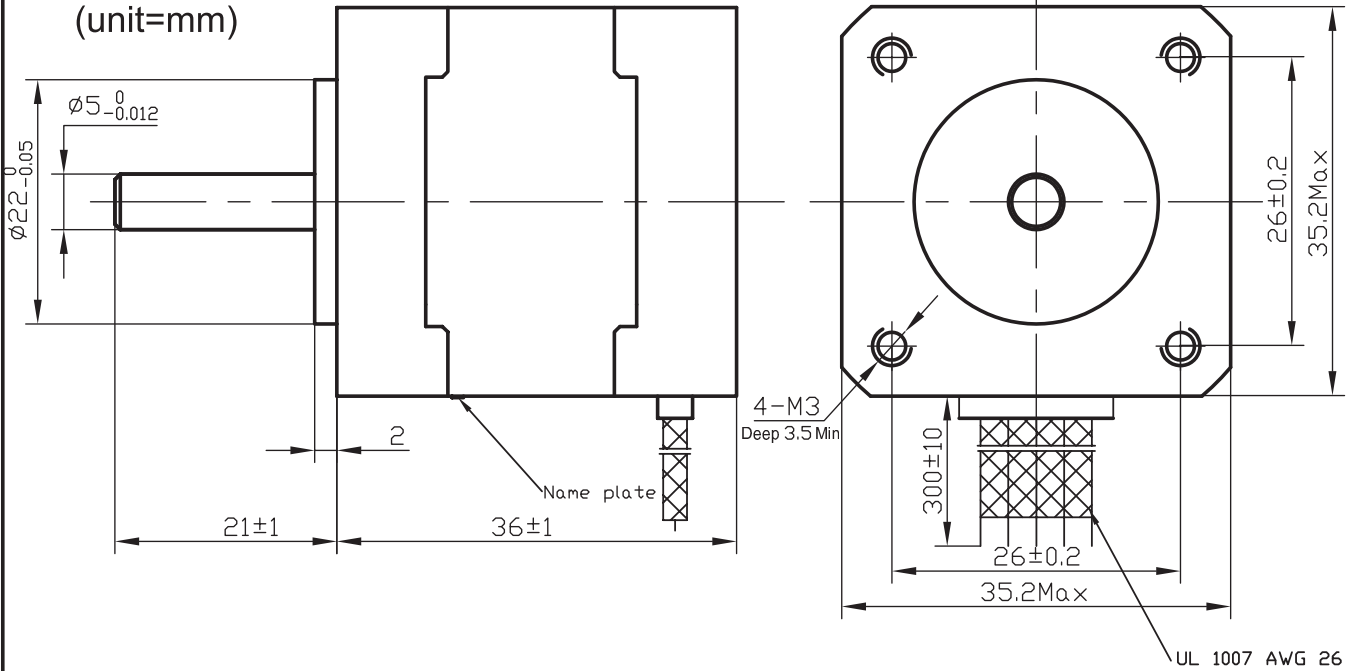
VOLTAGE: 24VDC, CONSTANT CURRENT: 1.0A, HALF STEP



● Wiring Diagram:



● Dimensions:
(unit=mm)



⚠					SY35ST36-1004A	TECHNICAL CONDITIONS
⚠						
REV	REVISIONS	DESCRIPTION	BY	DATE		
DRAW						
CHECK						
APPROVE					CHANGZHOU SONGYANG MACHINERY & ELECTRONICS NEW TECHNIC INSTITUTE	030036001