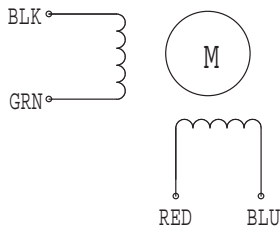


# HIGH TORQUE HYBRID STEPPING MOTOR SPECIFICATIONS

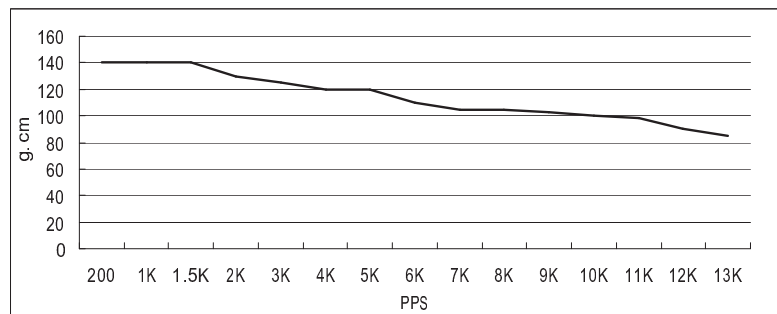
General specifications		Electrical specifications	
Step Angle (°)	1.8	Rated Voltage (V)	3.9
Temperature Rise (°C)	80 Max (rated current, 2 phase on)	Rated Current (A)	0.6
Ambient Temperature (°C)	-20 ~ +50	Resistance Per Phase ( $\pm 10\%$ $\Omega$ )	6.5 (25°C)
Number of Phase	2	Inductance Per Phase ( $\pm 20\%$ mH)	1.7
Insulation Resistance (M $\Omega$ )	100 Min (500VDC)	Holding Torque (g.cm)	180
Insulation Class	Class B	Detent Torque (g.cm)	
Max.radial force (N)	28 (20mm from the flange)	Rotor Torque (g.cm <sup>2</sup> )	2.0
Max.axial force (N)	10	Weight (Kg)	

● Wiring Diagram :



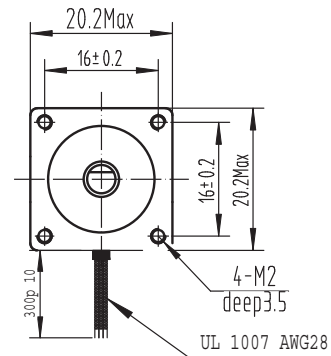
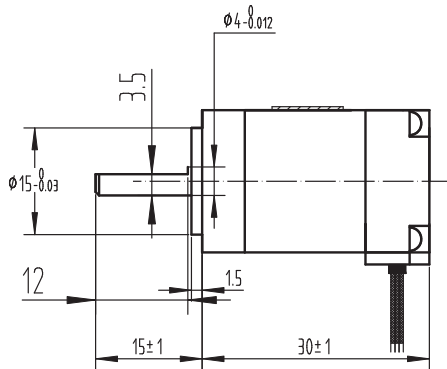
● Pull out torque curve :

VOLTAGE: 24VDC, CONSTANT CURRENT:0.6A, HALF STEP



● Dimensions:

(unit=mm)



REV	REVISIONS	DESCRIPTION	BY	DATE	S20STH30-0604A	TECHNICAL CONDITIONS
DRAW	孔祥振	2012.05.13			CHANGZHOU SONGYANG MACHINERY & ELECTRONICS NEW TECHNIC INSTITUTE	010030020
CHECK						
APPROVE						