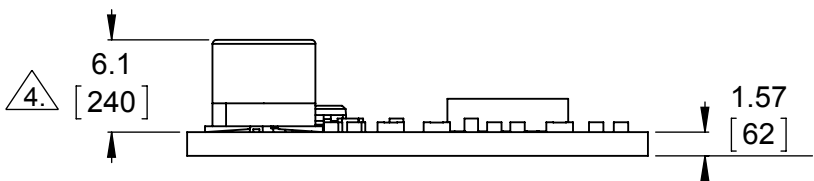


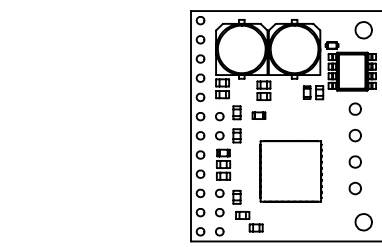
1 Board dimensions (top view)
Scale 2:1

2 Connector callouts (bottom view)
Scale 2:1

3 Isometric view
Scale 2:1



4 Profile
Scale 2:1



5 Actual size
Scale 1:1

1. To get the specified scale, select 100% in print settings.
2. Drill location tolerance: ± 0.1 [± 5].
3. Board edge tolerance: ± 0.3 [± 10].
4. Height of capacitor above the board is 7.8 [307] for boards manufactured prior to December 2014.

https://www.pololu.com/product/1212	
Name: MC33926 Motor Driver Carrier	Item number: 1212
Drawing date: 11 January 2016	
Units: mm [mil]	PCB dev code: md10a
 © 2016 Pololu Corporation	