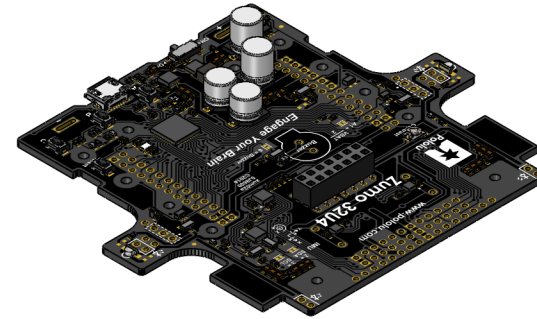
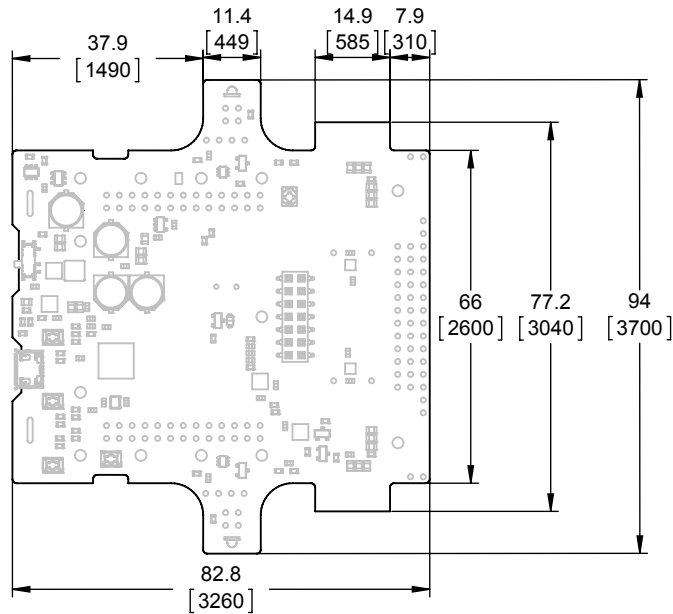


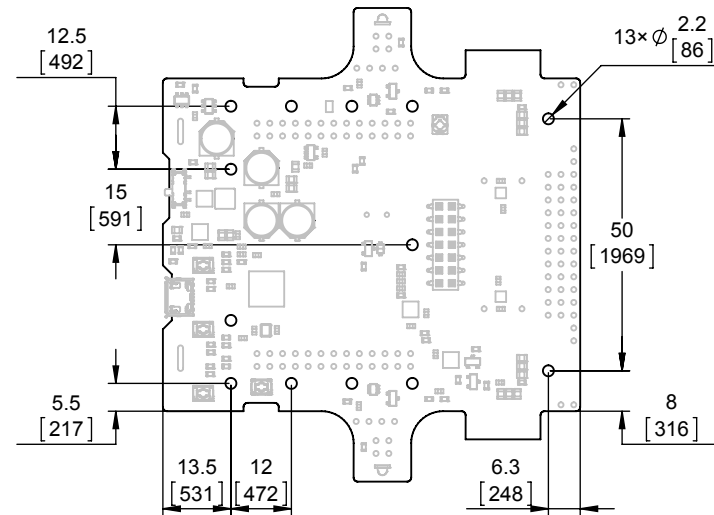
1 Profile  
Scale 2:3



2 Isometric view  
Scale 2:3



3 Board dimensions  
Scale 2:3



4 Mounting hole locations  
Scale 2:3

1. To get the specified scale, select 100% in print settings.
2. Drill location tolerance:  $\pm 0.1$  [ $\pm 5$ ].
3. Board edge tolerance:  $\pm 0.3$  [ $\pm 10$ ].

<https://www.pololu.com/category/170/zumo-32u4-robot>

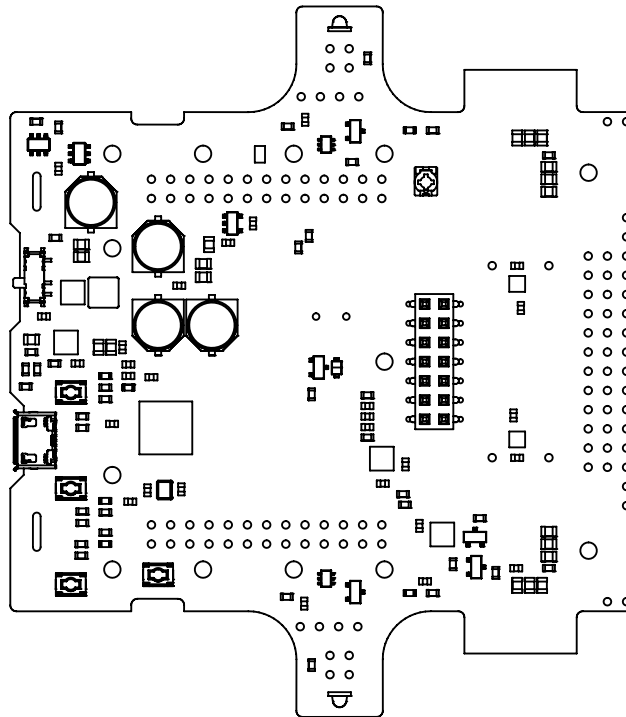
Name: Zumo 32U4 Main Board

Drawing date:  
31 July 2015

Units: mm  
[mil]

PCB dev code:  
zum02a

  
© 2015 Pololu Corporation



5 Actual size  
Scale 1:1

1. To get the specified scale, select 100% in print settings.
2. Drill location tolerance:  $\pm 0.1$  [ $\pm 5$ ].
3. Board edge tolerance:  $\pm 0.3$  [ $\pm 10$ ].

<https://www.pololu.com/category/170/zumo-32u4-robot>

Name: Zumo 32U4 Main Board

Drawing date:  
31 July 2015

Units: mm  
[mil]

PCB dev code:  
zum02a

  
© 2015 Pololu Corporation