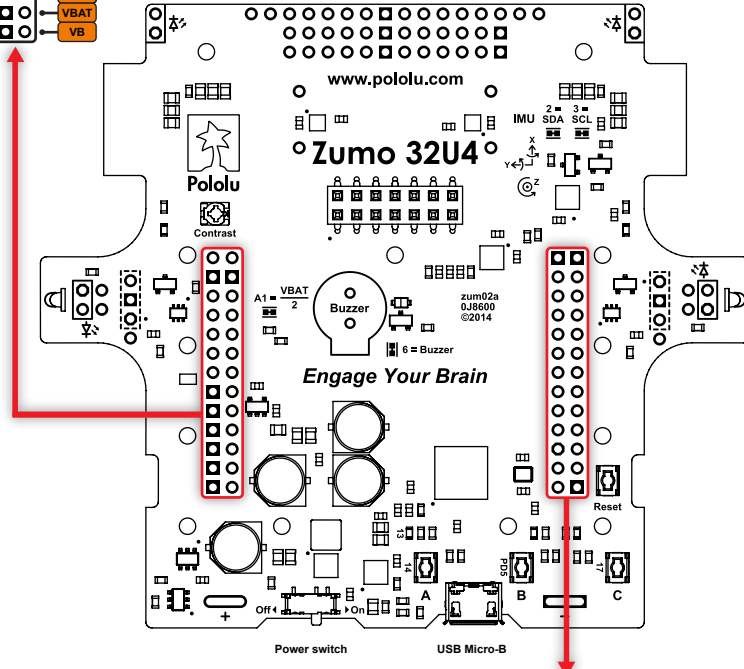
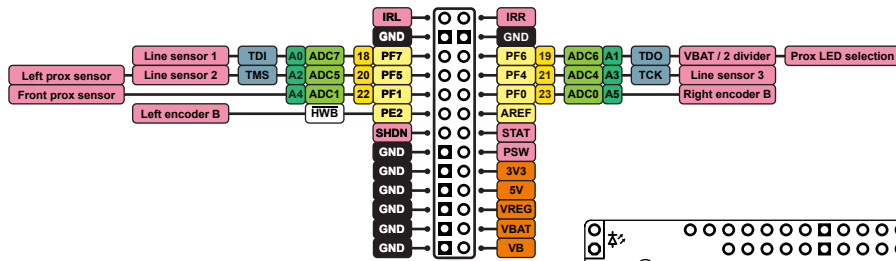


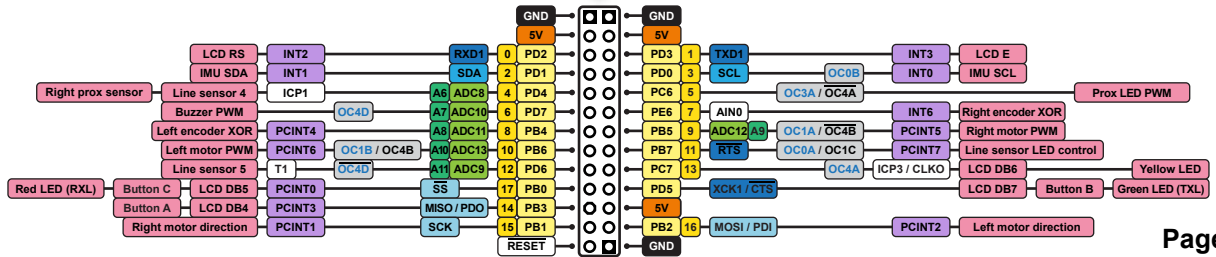
Zumo 32U4

Pinout and peripherals

Top expansion



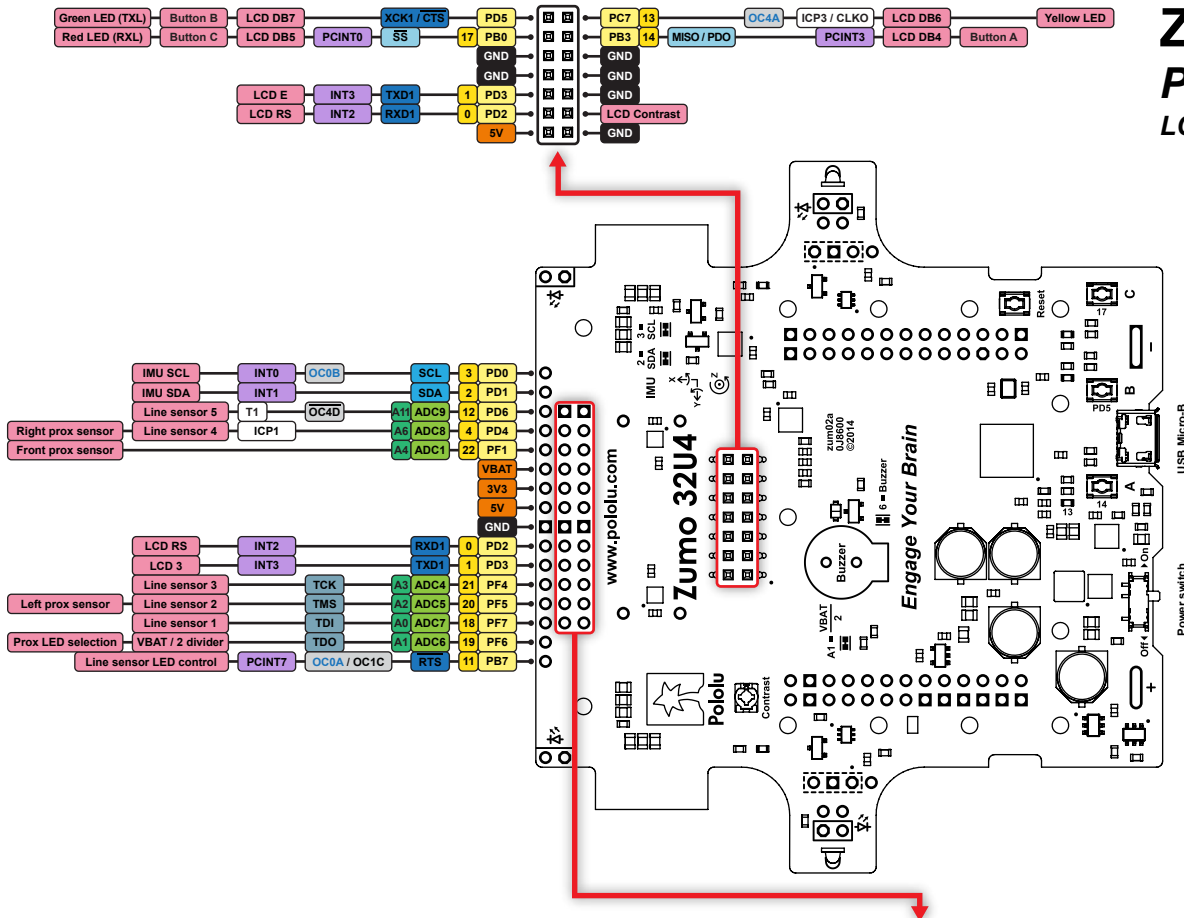
Power distribution
Ground (0 V)
AVR I/O pin names
Arduino digital pin numbers
AVR ADC channels
Arduino analog pin numbers
USART
PC
SPI
JTAG
PWM outputs (Arduino analogWrite)
Interrupts
Other peripheral functions
On-board hardware



Zumo 32U4

Pinout and peripherals

LCD connector and front expansion



Power distribution	
Ground (0 V)	Black
AVR I/O pin names	Yellow
Arduino digital pin numbers	Light Yellow
AVR ADC channels	Light Green
Arduino analog pin numbers	Green
USART	Blue
ICP	Light Blue
SPI	Light Blue
JTAG	Light Blue
PWM outputs (Arduino analogWrite)	Light Purple
Interrupts	Light Purple
Other peripheral functions	Light Purple
On-board hardware	Pink

