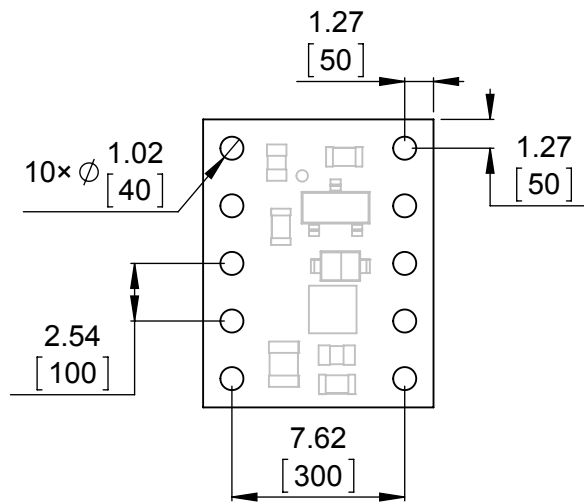
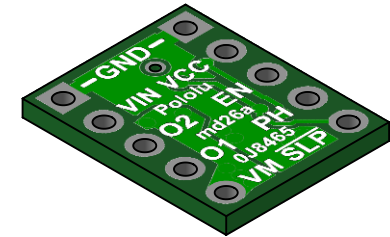
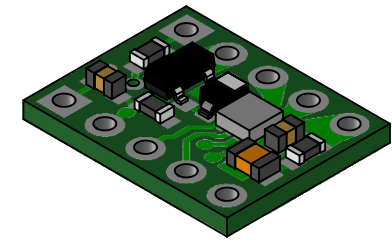


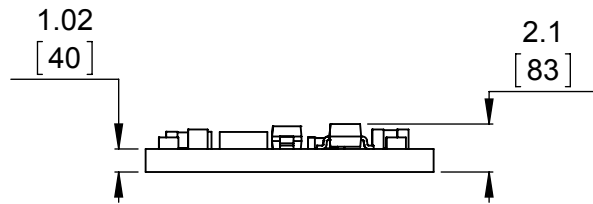
① Board dimensions
Scale 3:1



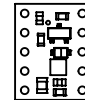
② Connector callouts
Scale 3:1



③ Isometric view
Scale 3:1



④ Profile
Scale 3:1



⑤ Actual size
Scale 1:1

1. To get the specified scale, select 100% in print settings.
2. Drill location tolerance: ± 0.1 [± 5].
3. Board edge tolerance: ± 0.3 [± 10].

<http://www.pololu.com/product/2990>

Name: DRV8838 Single Brushed DC Motor Driver Carrier

Item number:
2990

Drawing date:
23 September 2014

Units: mm
[mil]

PCB dev code:
md26a


© 2014 Pololu Corporation