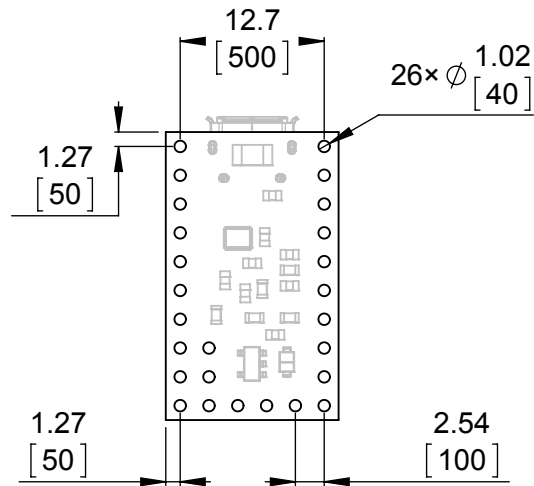
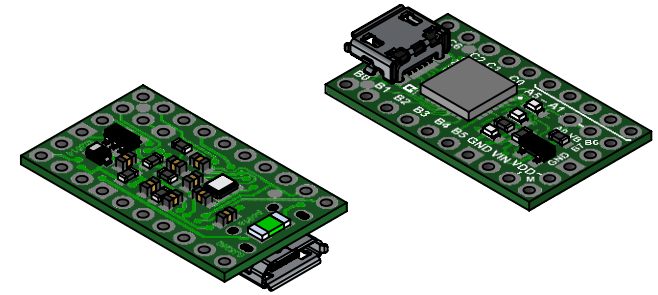


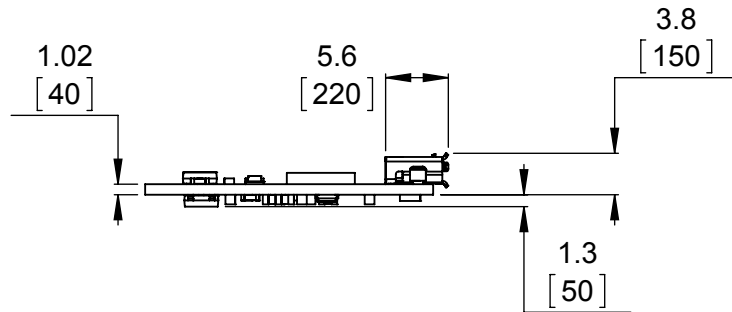
① Board dimensions (top view)  
Scale 3:2



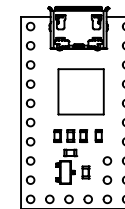
② Connector callouts (bottom view)  
Scale 3:2



③ Isometric view  
Scale 3:2



④ Profile  
Scale 3:2



⑤ Actual size  
Scale 1:1

1. To get the specified scale, select 100% in print settings.
2. Drill location tolerance:  $\pm 0.1$  [ $\pm 5$ ].
3. Board edge tolerance:  $\pm 0.3$  [ $\pm 10$ ].

<http://www.pololu.com/product/3150>

Name: <b>P-Star 25K50 Micro</b>		Item number: <b>3150</b>	
Drawing date: <b>07 August 2014</b>			
Units: mm [mil]	PCB dev code: <b>pc01a</b>		
		 © 2014 Pololu Corporation	