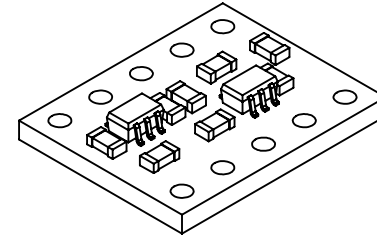
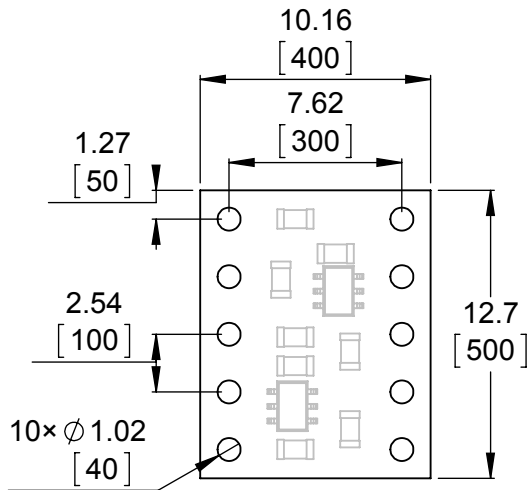


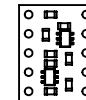
① Profile
Scale 3:1



③ Isometric view
Scale 3:1



② Connector callouts
Scale 3:1



④ Actual size
Scale 1:1

1. To get the specified scale, select 100% in print settings.
2. Drill location tolerance: ± 0.1 [± 5].
3. Board edge tolerance: ± 0.3 [± 10].

<http://www.pololu.com/product/2595>

Name: Logic Level Shifter,
4-Channel, Bidirectional

Item number:
2595

Drawing date:
2 May 2014

Units: mm
[mil]

PCB dev code:
Is01a01


Robotics & Electronics
© 2014 Pololu Corporation