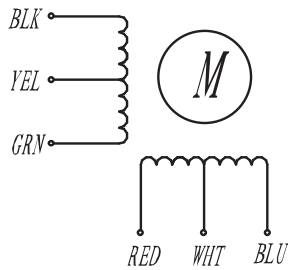


HIGH TORQUE HYBRID STEPPING MOTOR SPECIFICATIONS

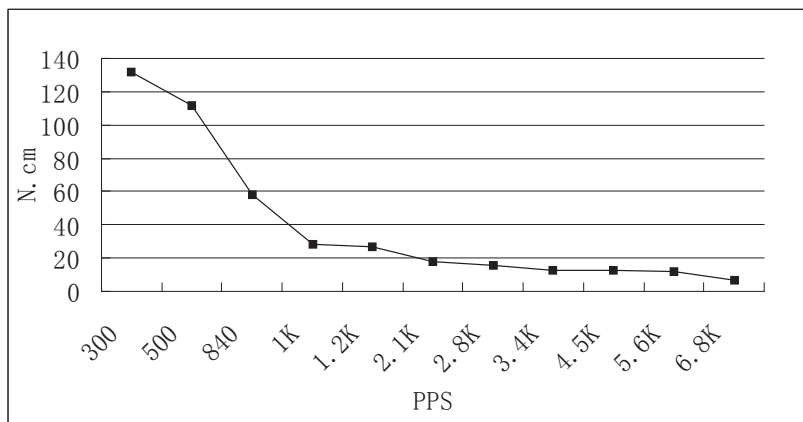
General specifications		Electrical specifications	
Step Angle (°)	1.8	Rated Voltage (V)	8.6
Temperature Rise (°C)	80 Max (rated current, 2 phase on)	Rated Current (A)	1.0
Ambient Temperature (°C)	-20 ~ +50	Resistance Per Phase ($\pm 10\% \Omega$)	8.6
Number of Phase	2	Inductance Per Phase ($\pm 20\% \text{mH}$)	14
Insulation Resistance (M Ω)	100 Min (500VDC)	Holding Torque (N.cm)	135
Insulation Class	Class B		
Max. radial force (N)	75 (20mm from the flange)		
Max. axial force (N)	15		

● Wiring Diagram :

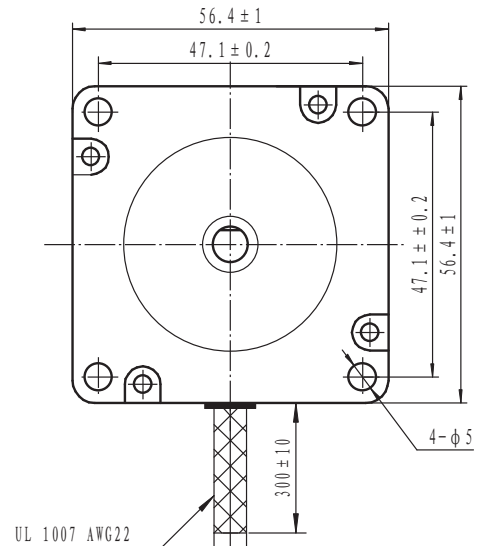
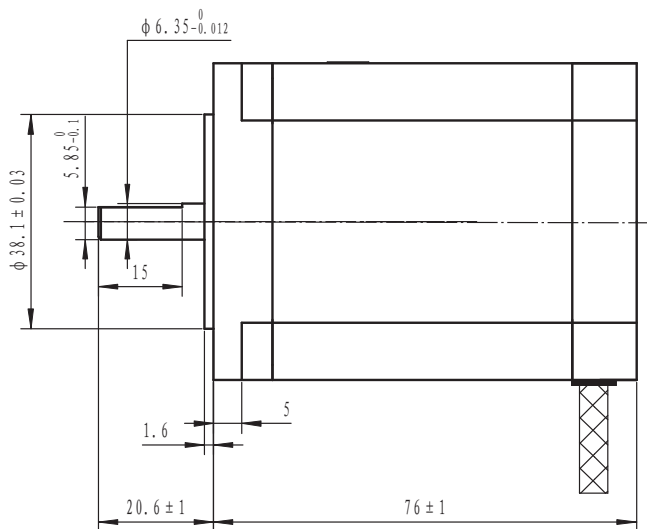


● Pull out torque curve :

VOLTAGE: 30VDC, CONSTANT CURRENT: 1.0A, HALF STEP



Dimensions:
(unit=mm)



					SY57STH76-1006A	TECHNICAL CONDITIONS
REV	REVISIONS	DESCRIPTION	BY	DATE	CHANGZHOU SONGYANG MACHINERY & ELECTRONICS NEW TECHNIC INSTITUTE	080076145
DRAW	2013/02/19					
CHECK						
APPROVE						