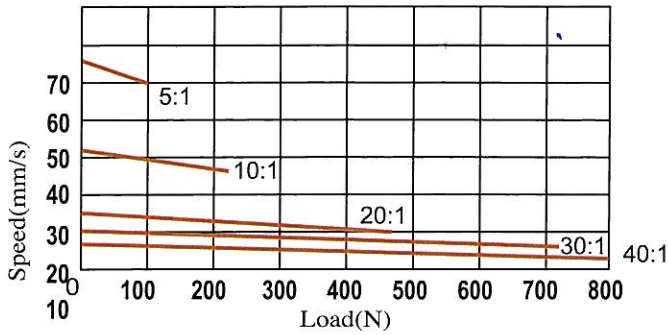
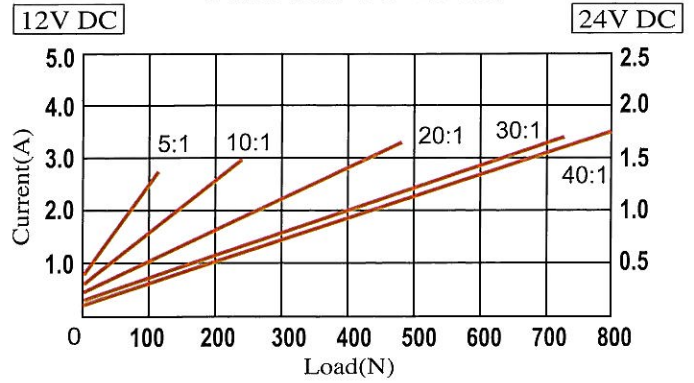


## Speed vs Load



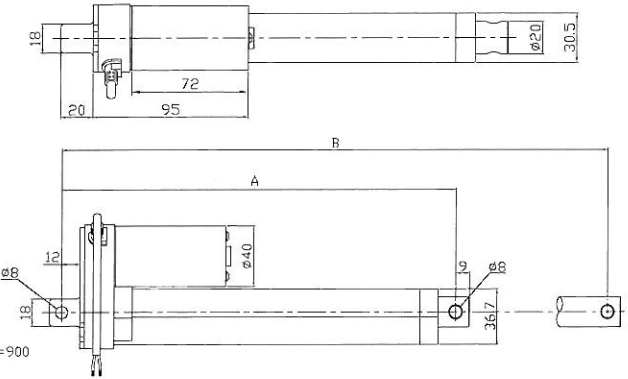
## Current vs Load



Standard	Stroke	50	100	150	200	250	300
	A	158	209	260	311	362	413
B	208	309	410	511	612	713	

(mm)

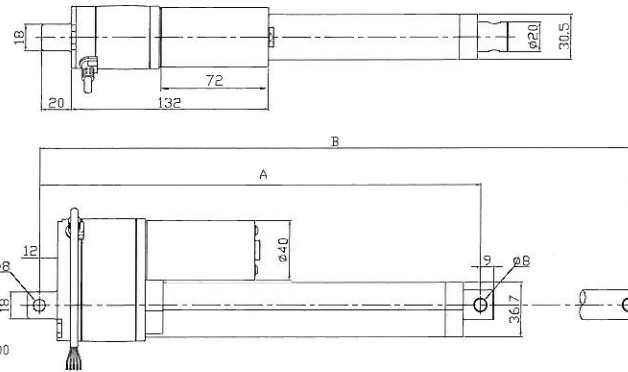
A: Retracted Length  
B: Extended Length  
Stroke = B - A



Potentiometer	Stroke	50	100	150	200	250	300
	A	195	246	297	348	399	450
B	245	346	447	548	649	750	

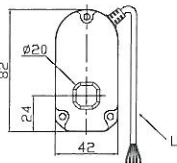
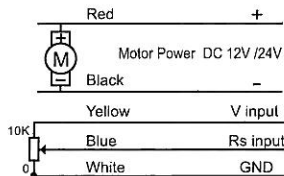
(mm)

A: Retracted Length  
B: Extended Length  
Stroke = B - A



Value of POT	
Stroke(mm)	Resistance(Ω)
50	0.3-9.3K
100	0.3-9.7K
150	0.3-8.6K
200	0.3-9.6K
250	0.3-9.3K
300	0.3-9.3K

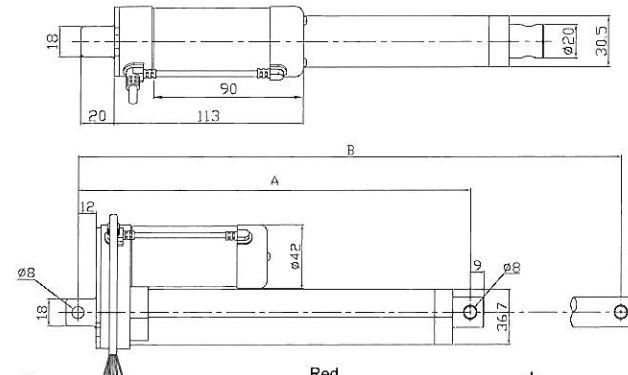
Remark:tolerance:±0.3K



Hall Effect	Stroke	50	100	150	200	250	300
	A	158	209	260	311	362	413
B	208	309	410	511	612	713	

(mm)

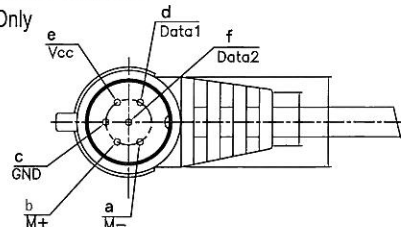
A: Retracted Length  
B: Extended Length  
Stroke = B - A



Hall Sensor	
Gear Ratio	Resolution(Pulses/mm)
5:1	2.3
10:1	3.6
20:1	6.9
30:1	10.6
40:1	14.3

Standard Plug for Hall Sensor Version

\* Pin Data2 for 2 Hall Sensor Only



Wire Connection

