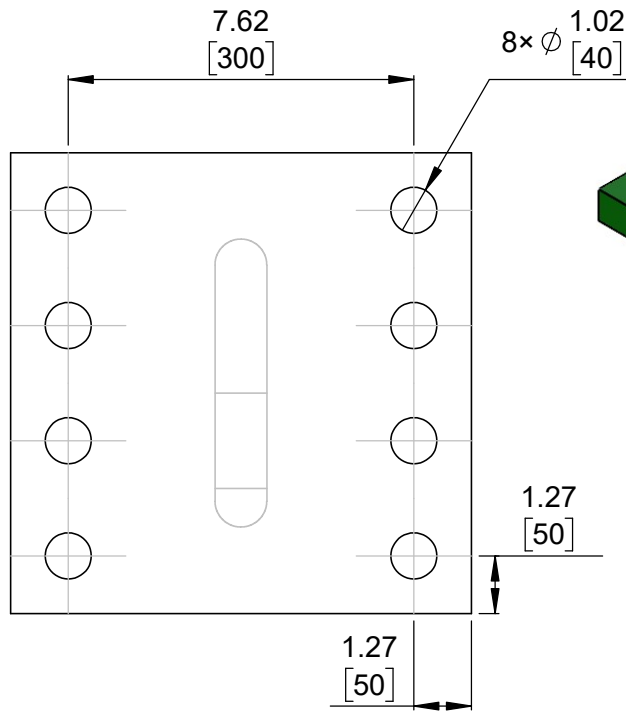
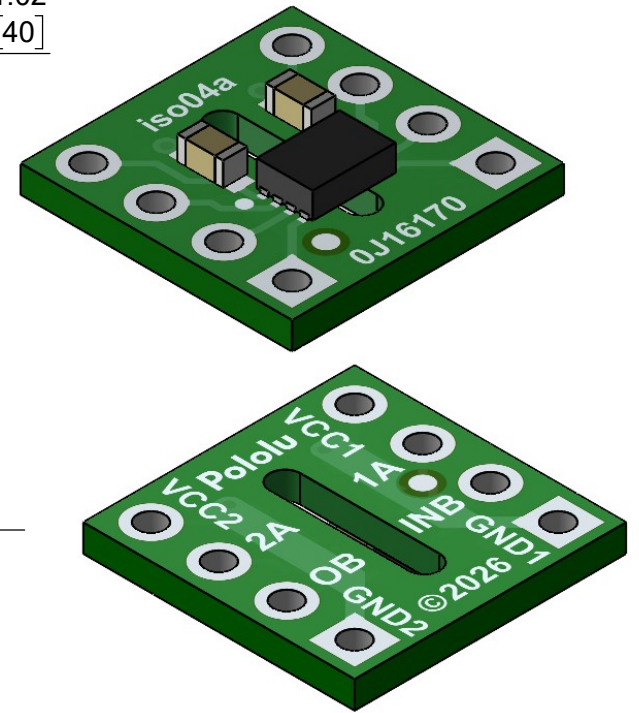


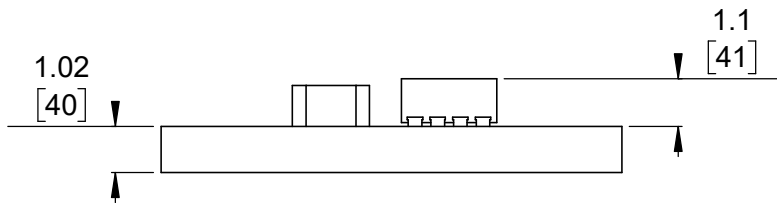
① Board dimensions (top view)
Scale 6:1



② Connector callouts (bottom view)
Scale 6:1



③ Isometric view
Scale 5:1




④ Profile
Scale 6:1



⑤ Actual size
Scale 1:1

1. Grid lines indicate 2.54 mm [100 mil] spacing.
2. To get the specified scale, select 100% in print settings.
3. Drill location tolerance: ± 0.1 [± 5].
4. Board edge tolerance: ± 0.3 [± 10].

<https://www.pololu.com/category/383>

Name: ISO652x 2-Channel Digital Isolator Carriers		Item number: 5746-5749
Drawing date: 22 May 2026	Dev code: iso04a	 © 2026 Pololu Corporation
Units: mm [mil]	Material: mixed	