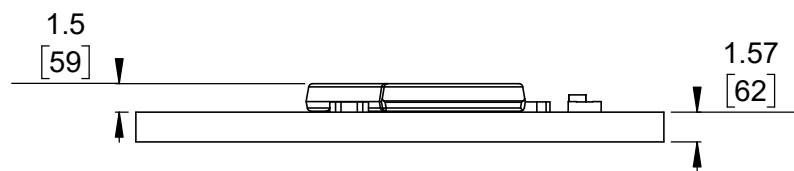


1 Board dimensions (top view)  
Scale 5:2

2 Connector callouts (bottom view)  
Scale 5:2

3 Isometric view  
Scale 2:1



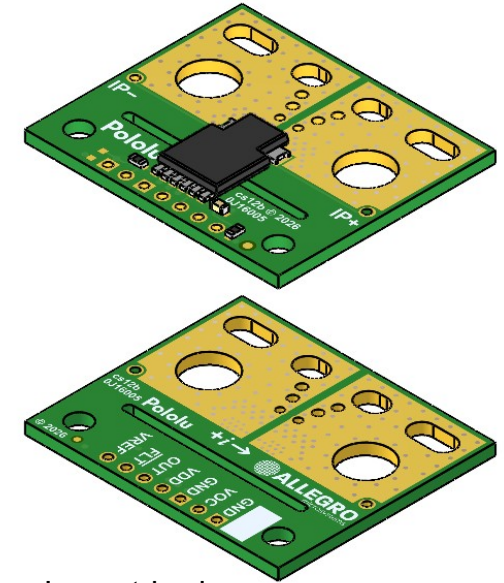
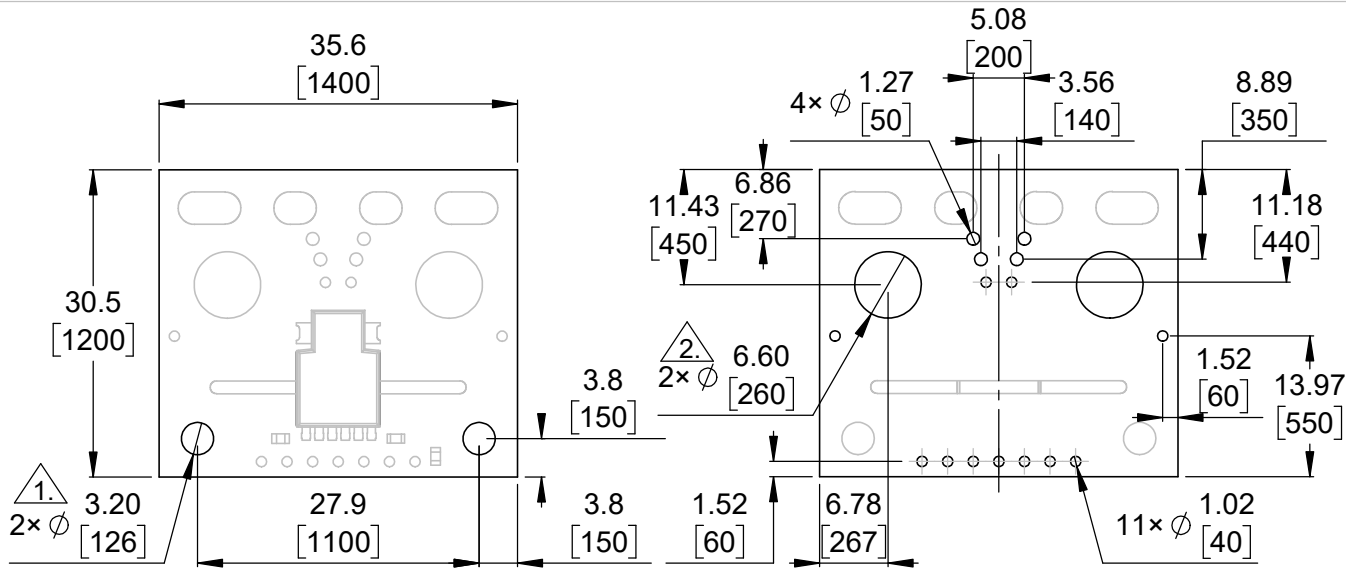
4 Profile  
Scale 5:2

5 Actual size  
Scale 1:1

- 1. Intended for #2 and M2 screws.
- 2. Intended for #8 and M4 screws and 8 AWG or thinner wire.
- 3. Intended for #2 and M2 screws and 14 AWG or thinner wire.
- 4. Grid lines indicate 2.54 mm [100 mil] spacing.
- 5. To get the specified scale, select 100% in print settings.
- 6. Drill location tolerance:  $\pm 0.1$  [ $\pm 5$ ].
- 7. Board edge tolerance:  $\pm 0.3$  [ $\pm 10$ ].

<a href="https://www.pololu.com/category/380">https://www.pololu.com/category/380</a>	
Name: ACS37200 Current Sensor Compact Carriers	Item number: 5780-5785
Drawing date: 29 May 2026	Dev code: cs12a
Units: mm [mil]	Material: mixed

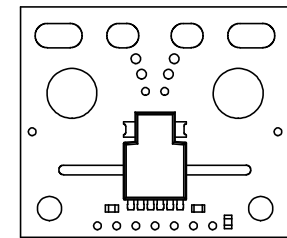
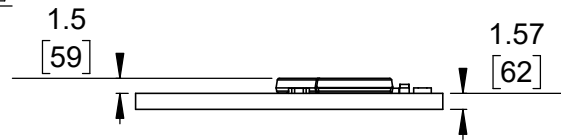
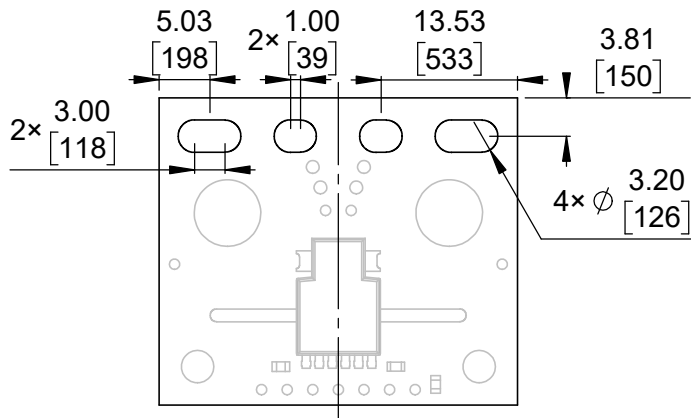




① Board dimensions (top view)  
Scale 4:3

② Connector callouts (bottom view)  
Scale 4:3

③ Isometric view  
Scale 4:3



④ Connector callouts (slots) ③  
Scale 4:3

⑤ Profile  
Scale 4:3

⑥ Actual size  
Scale 1:1

- ①. Intended for #4 and M3 screws.
- ②. Intended for 1/4" and M6 screws and 4 AWG or thinner wire.
- ③. Slots intended for 7.5 mm to 9.5 mm pitch connectors.
- 4. Grid lines indicate 2.54 mm [100 mil] spacing.
- 5. To get the specified scale, select 100% in print settings.
- 6. Drill location tolerance:  $\pm 0.1$  [ $\pm 5$ ].
- 7. Board edge tolerance:  $\pm 0.3$  [ $\pm 10$ ].

<https://www.pololu.com/category/380>

Name: ACS37200 Current Sensor Large Carriers		Item number: 5790-5795
Drawing date: 29 May 2026	Dev code: cs12b	
Units: mm [mil]	Material: mixed	

