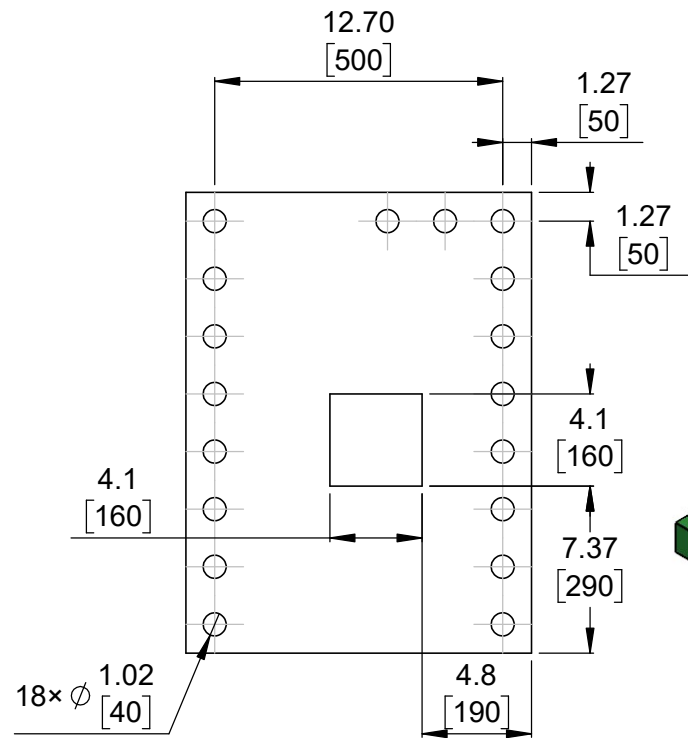
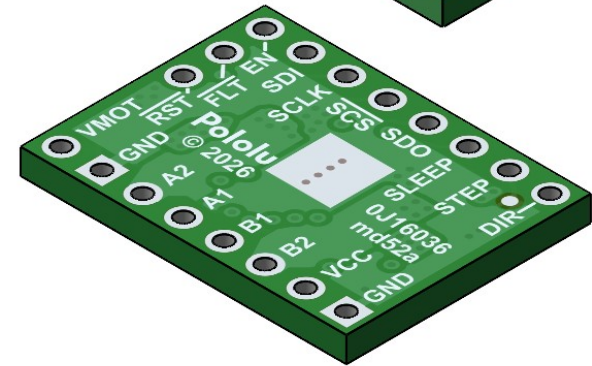
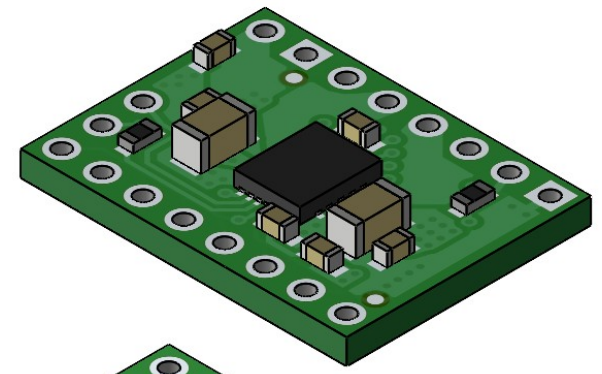


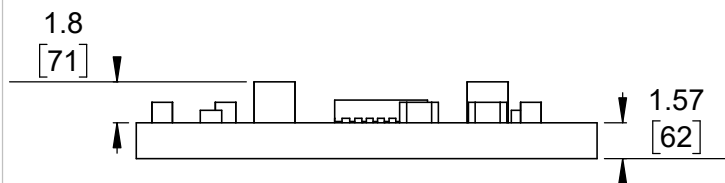
① Board dimensions (top view)
Scale 3:1



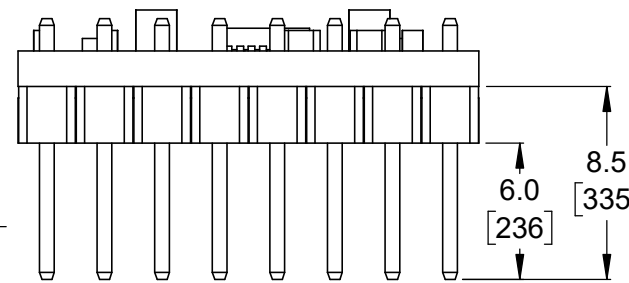
② Connector callouts (bottom view)
Scale 3:1



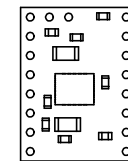
③ Isometric view
Scale 3:1



④ Profile
Scale 3:1




⑤ Profile with headers
Scale 3:1



⑥ Actual size
Scale 1:1

1. Grid lines indicate 2.54 mm [100 mil] spacing.
2. To get the specified scale, select 100% in print settings.
3. Drill location tolerance: ± 0.1 [± 5].
4. Board edge tolerance: ± 0.3 [± 10].

<https://www.pololu.com/category/378>

Name: MP6602 Stepper Motor Driver Carrier		Item number: 5688, 5689
Drawing date: 23 April 2026	Dev code: md52a	 © 2026 Pololu Corporation
Units: mm [mil]	Material: mixed	