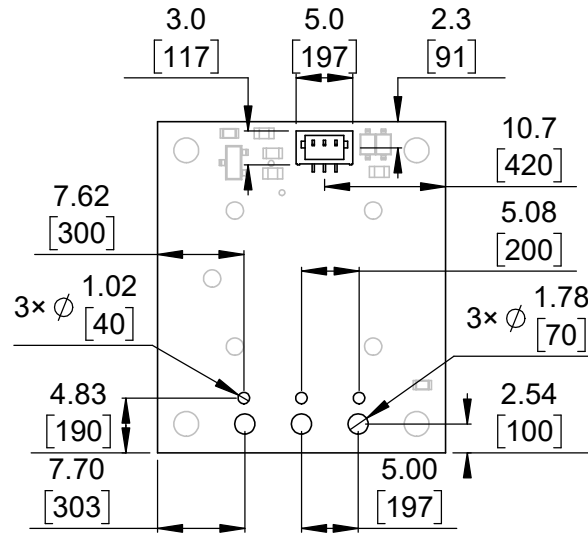
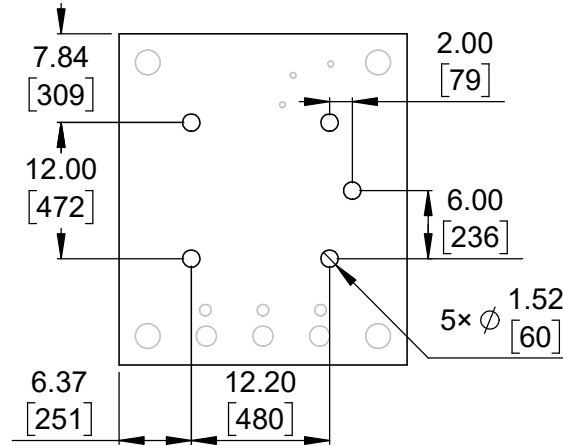


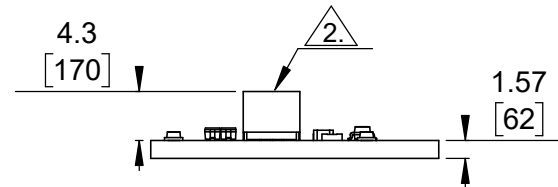
① Board dimensions (top view)
Scale 3:2



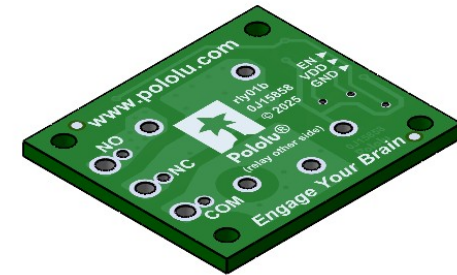
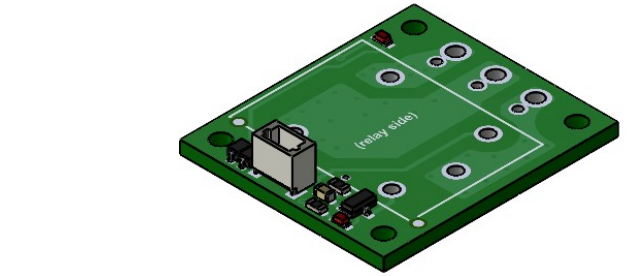
② Connector callouts (bottom view)
Scale 3:2



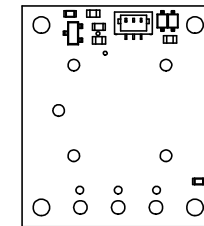
④ Relay connector callouts
(bottom view)
Scale 3:2



⑤ Short profile
Scale 3:2



③ Isometric view
Scale 3:2



⑥ Actual size
Scale 1:1

1.

Intended for #2 and M2 screws.

2.

Top-entry, 3-pin male JST SH-style connector (1.0 mm pitch).
To get the specified scale, select 100% in print settings.

3.

Drill location tolerance: ± 0.1 [± 5].

4.

Board edge tolerance: ± 0.3 [± 10].

5.

<https://www.pololu.com/product/5664>

Name:
Pololu Basic SPDT Relay Carrier for
"Sugar Cube" Relays with JST SH-
Style Top-Entry Connector

Drawing date:
14 October 2025

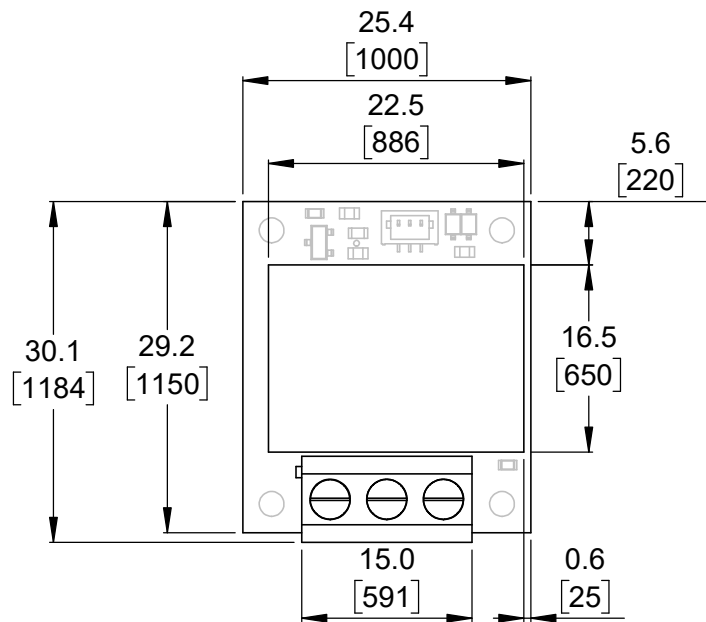
Units: mm
[mil]

Dev code:
rly01b

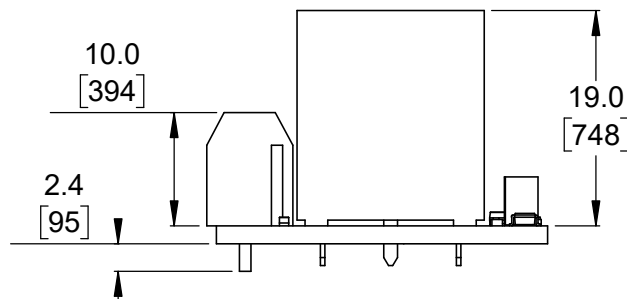
Material:
mixed

Item number:
5662-5664

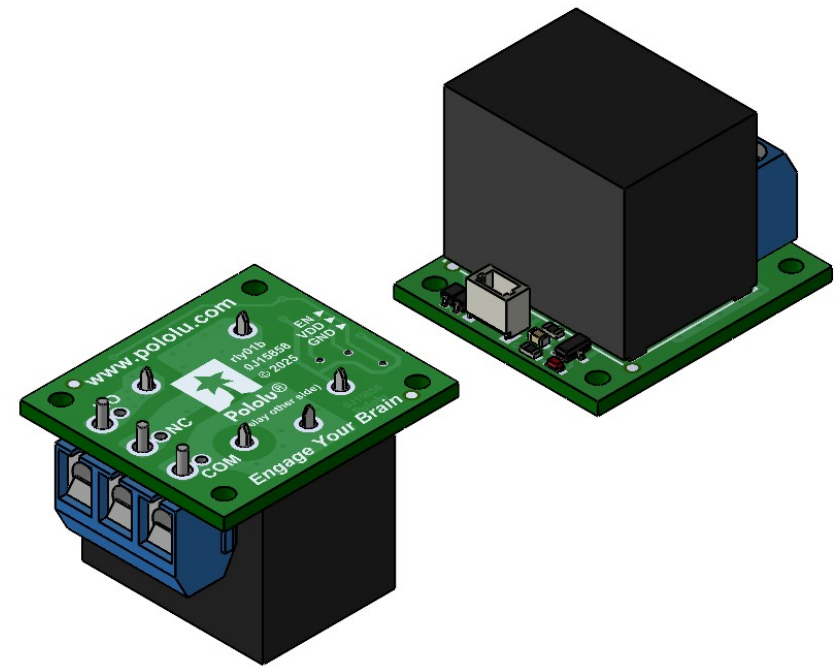
Pololu
Robotics & Electronics
© 2025 Pololu Corporation



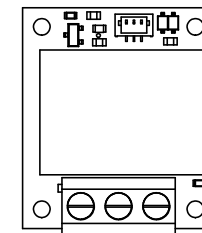
Board dimensions (top view)
(with included through-hole components)
① Scale 3:2



Long profile
(with included through-hole components)
③ Scale 3:2



Isometric view
(with included through-hole components)
② Scale 3:2



Top view (actual size)
(with included through-hole components)
④ Scale 1:1

- To get the specified scale, select 100% in print settings.
- Drill location tolerance: ± 0.1 [± 5].
- Board edge tolerance: ± 0.3 [± 10].

<https://www.pololu.com/product/5662>

Name:
Pololu Basic SPDT Relay Carrier with
Relay, Terminal Blocks, and JST SH-
Style Top-Entry Connector

Item number:
5662, 5663

Drawing date:
14 October 2025

Dev code:
rly01b

Units: mm
[mil]

Material:
mixed

Pololu
Robotics & Electronics
© 2025 Pololu Corporation