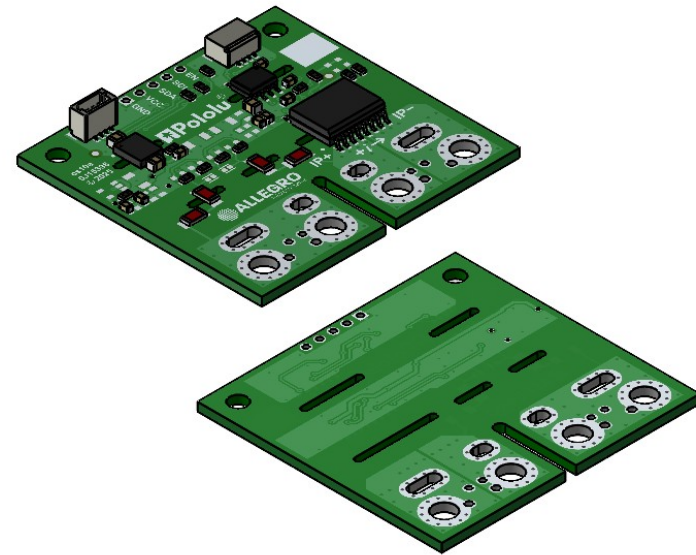
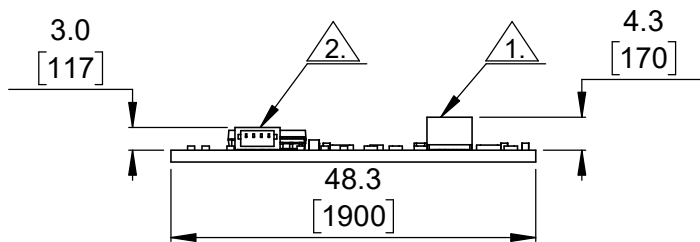


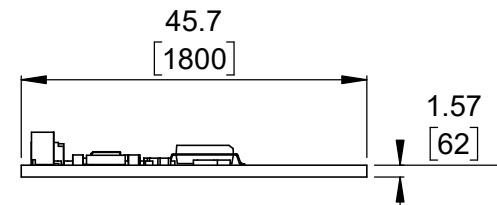
① Actual size
Scale 1:1



② Isometric view
Scale 1:1



③ Long profile
Scale 1:1



④ Short profile
Scale 1:1




1. Top-entry, 4-pin male JST SH-style connector.

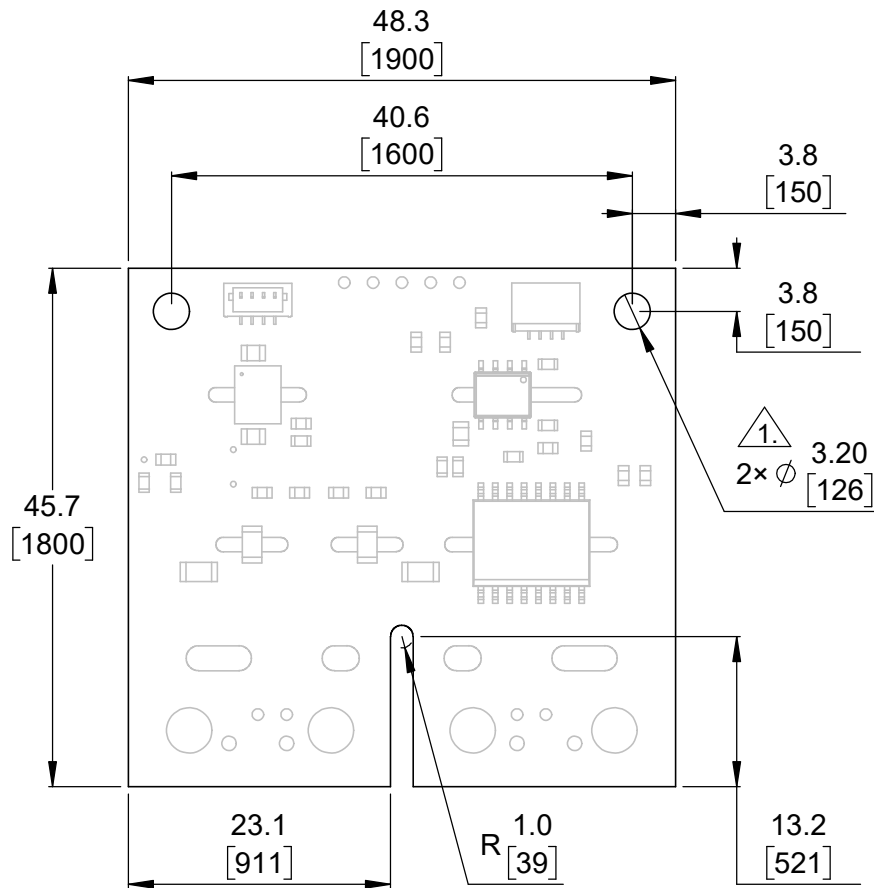


2. Side-entry, 4-pin male JST SH-style connector.

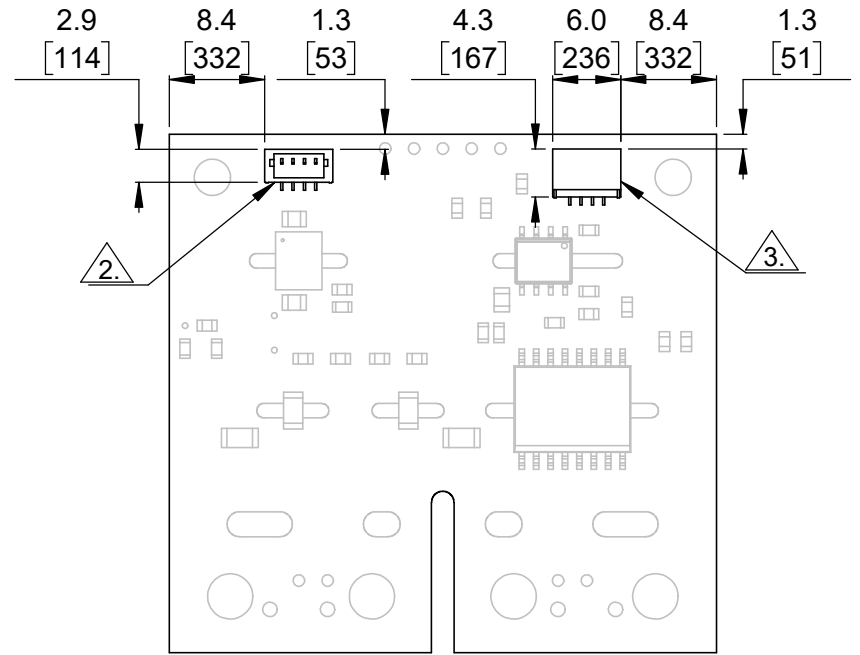
- 3. To get the specified scale, select 100% in print settings.
- 4. Drill location tolerance: ± 0.1 [± 5].
- 5. Board edge tolerance: ± 0.3 [± 10].

<https://www.pololu.com/category/343>

Name: ACS37800KMACTR-030B3-I2C Power Monitor Carrier with Secondary I ² C Isolation		Item number: 5410 - 5412
Drawing date: 17 April 2025	Dev code: cs10a	 © 2025 Pololu Corporation
Units: mm [mil]	Material: mixed	



① Board dimensions (top view)
Scale 3:2



② JST SH-style connectors
Scale 3:2



Intended for #4 and M3 screws.




Top-entry, 4-pin male JST SH-style connector.

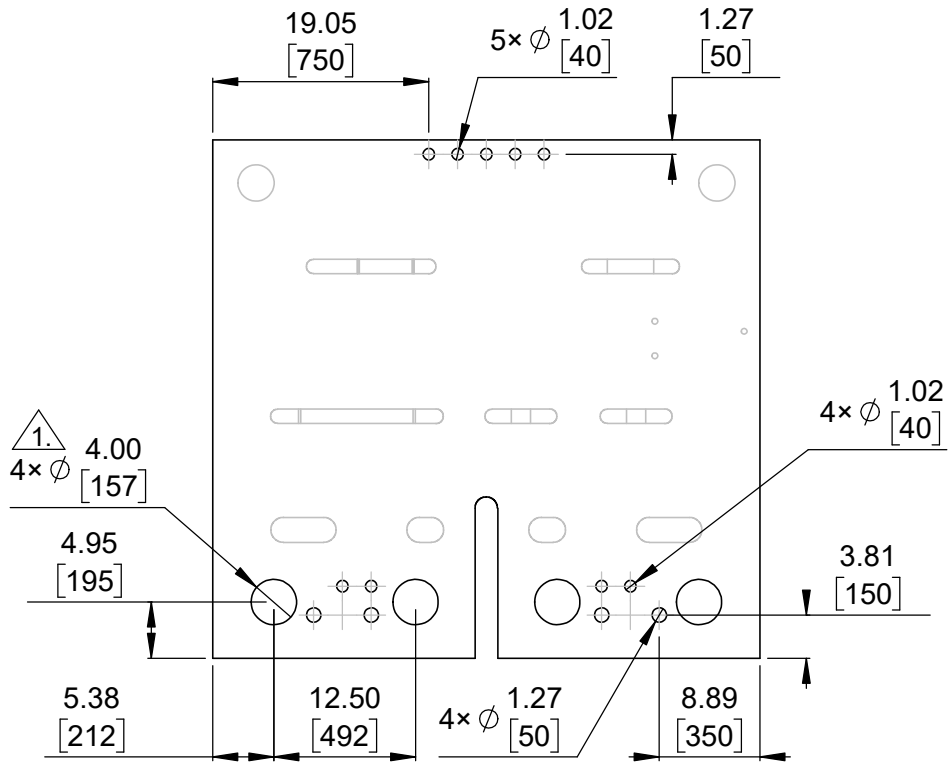


Side-entry, 4-pin male JST SH-style connector.

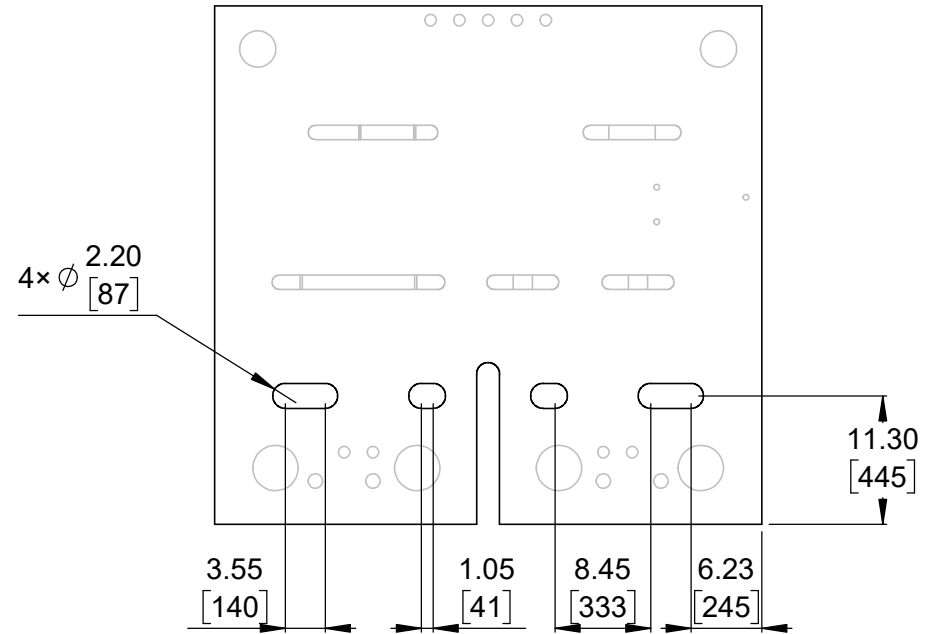
- 4. To get the specified scale, select 100% in print settings.
- 5. Drill location tolerance: ± 0.1 [± 5].
- 6. Board edge tolerance: ± 0.3 [± 10].

<https://www.pololu.com/category/343>

Name: ACS37800KMACTR-030B3-I2C Power Monitor Carrier with Secondary I ² C Isolation		Item number: 5410 - 5412
Drawing date: 17 April 2025	Dev code: cs10a	 © 2025 Pololu Corporation
Units: mm [mil]	Material: mixed	



① Connector callouts (bottom view)
Scale 3:2




② Connector callouts (slots) ②
Scale 3:2

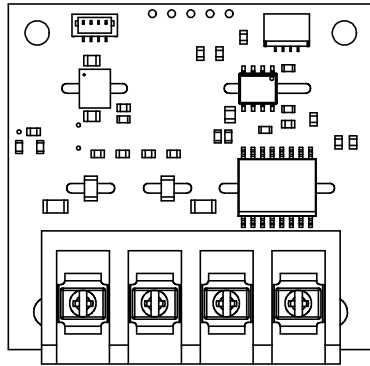
①. Intended for #6 and M3.5 screws and 10 AWG or thinner wire.

②. Slots intended for 9.5 mm to 12 mm pitch connectors.

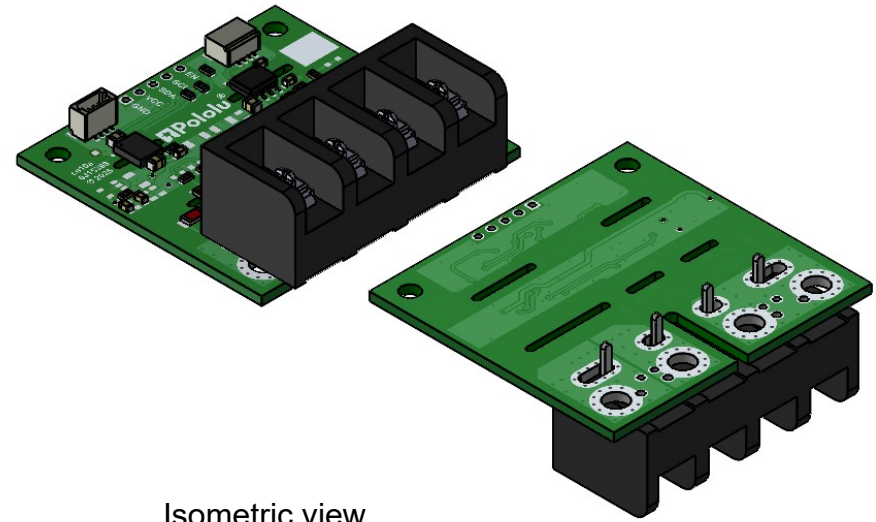
3. Grid lines indicate 2.54 mm [100 mil] spacing.
4. To get the specified scale, select 100% in print settings.
5. Drill location tolerance: ± 0.1 [± 5].
6. Board edge tolerance: ± 0.3 [± 10].

<https://www.pololu.com/category/343>

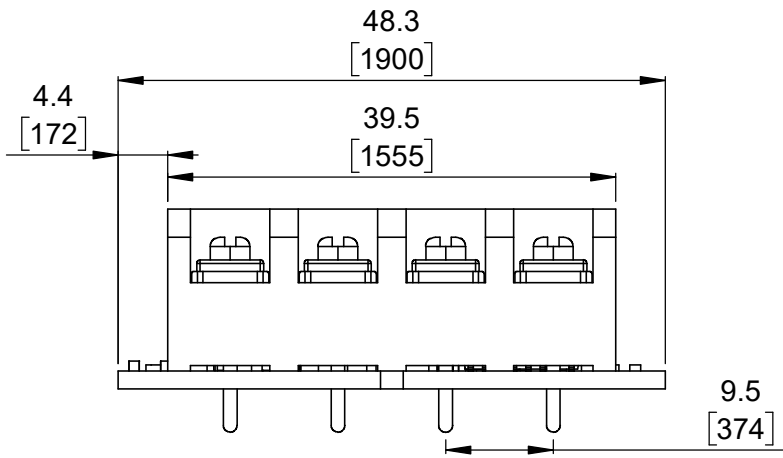
Name: ACS37800KMACTR-030B3-I2C Power Monitor Carrier with Secondary I ² C Isolation		Item number: 5410 - 5412
Drawing date: 17 April 2025	Dev code: cs10a	 Pololu Robotics & Electronics © 2025 Pololu Corporation
Units: mm [mil]	Material: mixed	



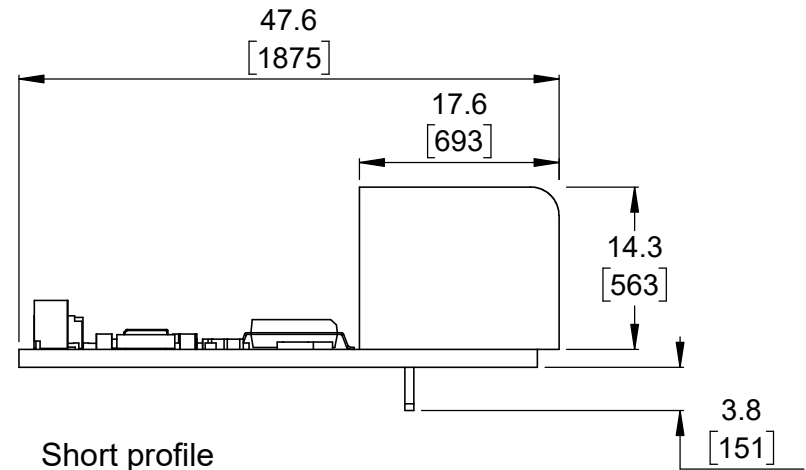
① Actual size
(with YK4410403000G terminal block)
Scale 1:1



② Isometric view
(with YK4410403000G terminal block)
Scale 1:1




③ Long profile
(with YK4410403000G terminal block)
Scale 3:2



④ Short profile
(with YK4410403000G terminal block)
Scale 3:2

1. To get the specified scale, select 100% in print settings.
2. Drill location tolerance: ± 0.1 [± 5].
3. Board edge tolerance: ± 0.3 [± 10].

<https://www.pololu.com/category/343>

Name: ACS37800KMACTR-030B3-I2C Power Monitor Carrier with Secondary I ² C Isolation		Item number: 5410 - 5412
Drawing date: 17 April 2025	Dev code: cs10a	 © 2025 Pololu Corporation
Units: mm [mil]	Material: mixed	