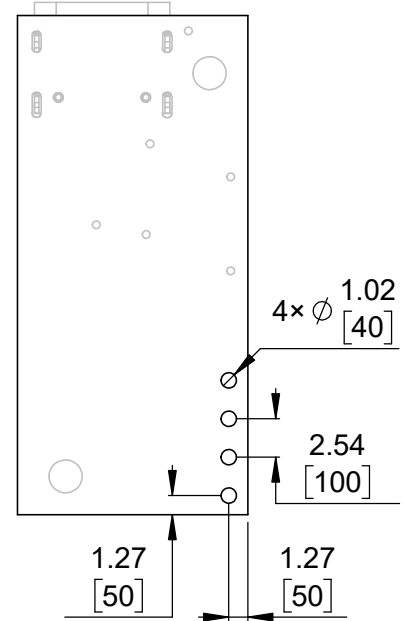
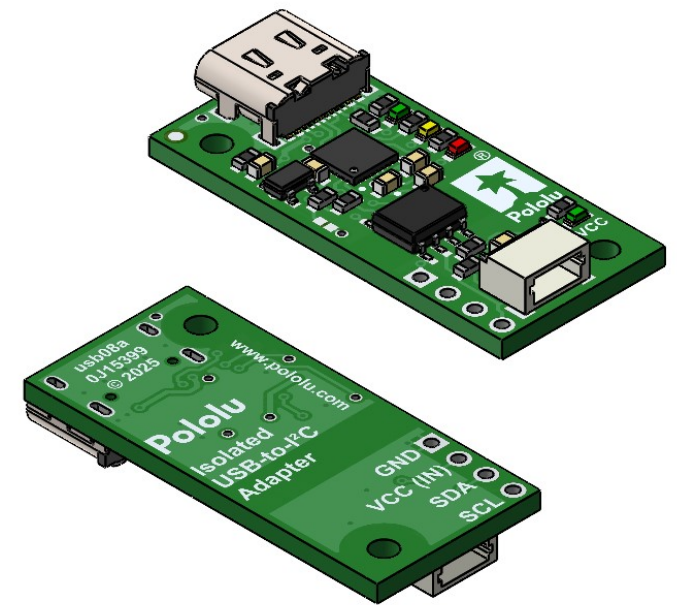


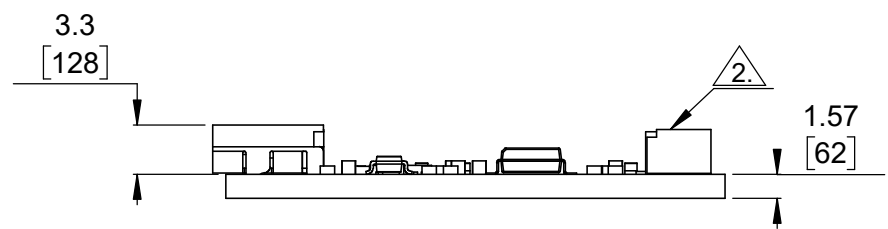
① Board dimensions (top view)  
Scale 2:1



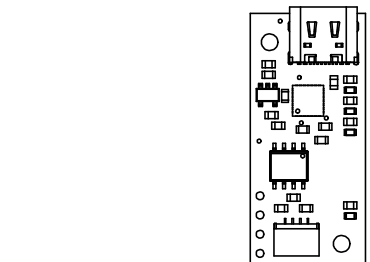
② Connector callouts (bottom view)  
Scale 2:1



③ Isometric view  
Scale 2:1



④ Profile  
Scale 2:1

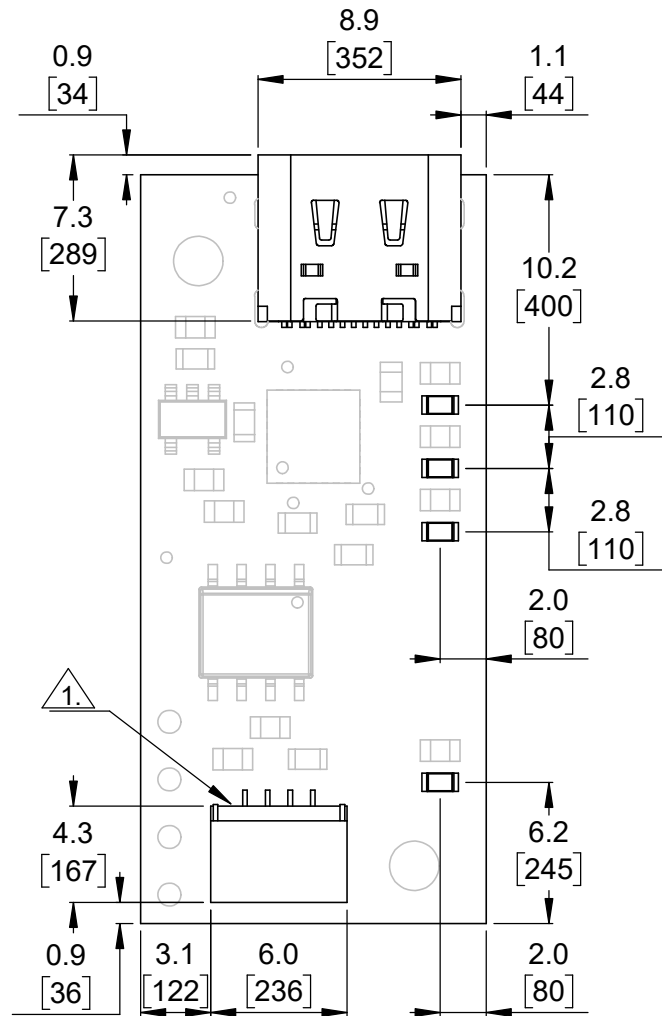


⑤ Actual size  
Scale 1:1

- ①. Intended for #2 and M2 screws.
- ②. Side-entry, 4-pin male JST SH-type connector.
- 3. To get the specified scale, select 100% in print settings.
- 4. Drill location tolerance:  $\pm 0.1$  [ $\pm 5$ ].
- 5. Board edge tolerance:  $\pm 0.3$  [ $\pm 10$ ].

|   |                      |
|---|----------------------|
| <a href="https://www.pololu.com/product/5396">https://www.pololu.com/product/5396</a> |                      |
| Name:<br>Pololu Isolated USB-to-I <sup>2</sup> C Adapter                              | Item number:<br>5396 |
| Drawing date:<br>1 April 2025   | Dev code:<br>usb08a  |
| Units: mm [mil]   | Material:<br>mixed   |





① User interface elements  
Scale 3:1

1. Side-entry, 4-pin male JST SH-type connector.

- 2. To get the specified scale, select 100% in print settings.
- 3. Drill location tolerance:  $\pm 0.1$  [ $\pm 5$ ].
- 4. Board edge tolerance:  $\pm 0.3$  [ $\pm 10$ ].

|   |                      |
|---|----------------------|
| <a href="https://www.pololu.com/product/5396">https://www.pololu.com/product/5396</a> |                      |
| Name:<br>Pololu Isolated USB-to-I <sup>2</sup> C Adapter                              | Item number:<br>5396 |
| Drawing date:<br>1 April 2025   | Dev code:<br>usb08a  |
| Units: mm [mil]   | Material:<br>mixed   |

