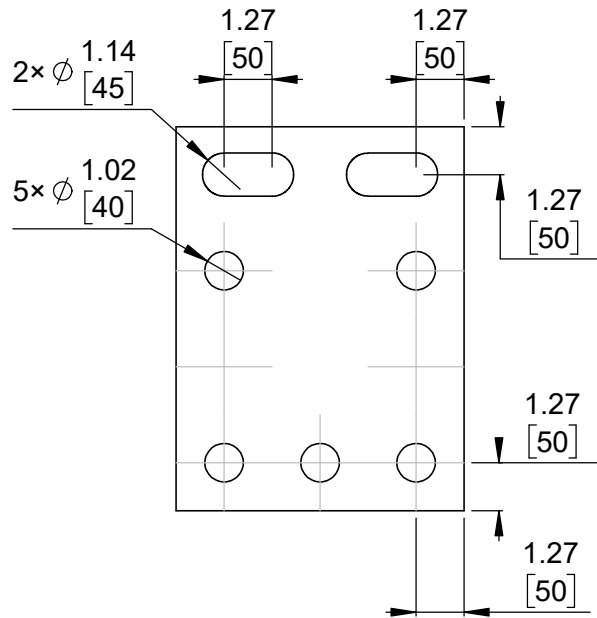
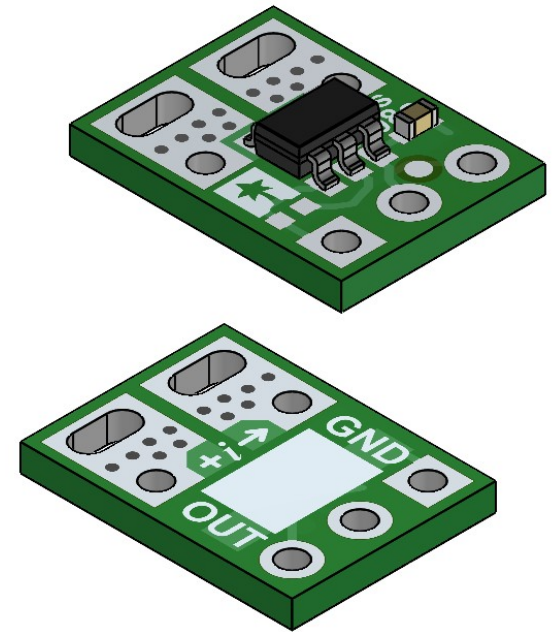


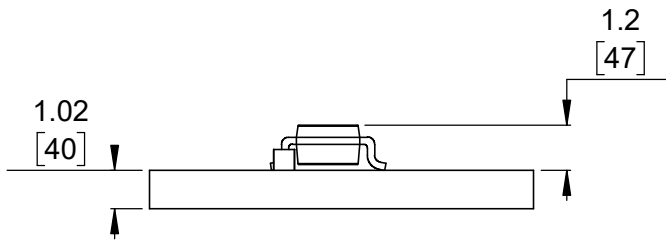
1 Board dimensions (top view)  
Scale 5:1



2 Connector callouts (bottom view)  
Scale 5:1



3 Isometric view  
Scale 5:1




4 Profile  
Scale 5:1

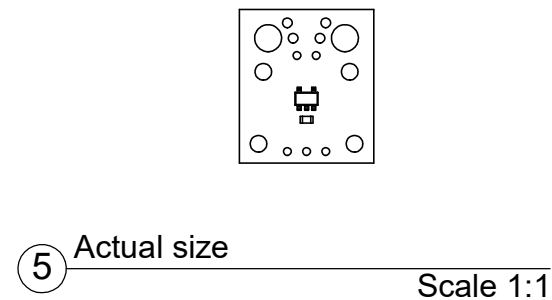
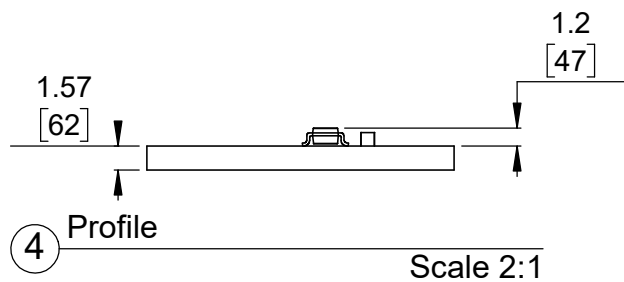
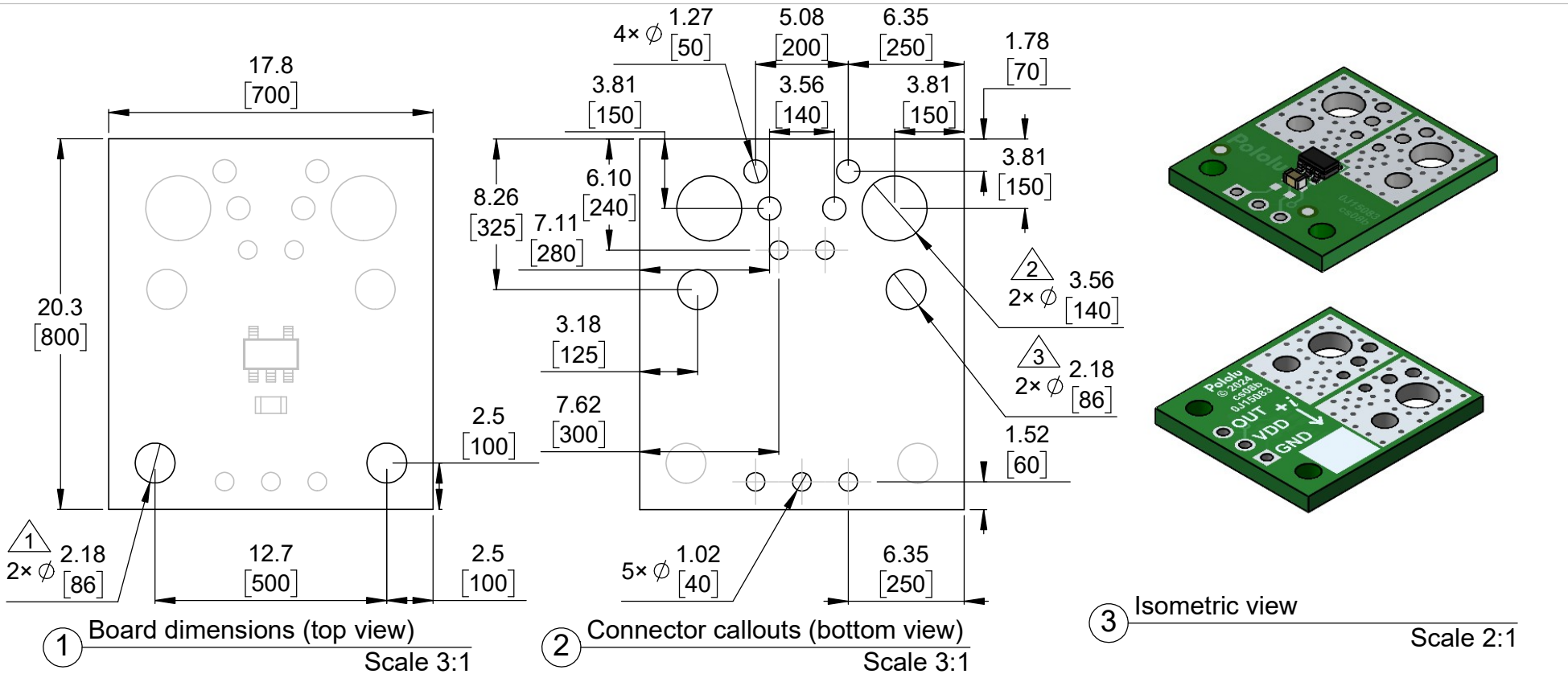


5 Actual size  
Scale 1:1

1. Grid lines indicate 2.54 mm [100 mil] spacing.
2. To get the specified scale, select 100% in print settings.
3. Drill location tolerance:  $\pm 0.1$  [ $\pm 5$ ].
4. Board edge tolerance:  $\pm 0.3$  [ $\pm 10$ ].

<https://www.pololu.com/category/338>

|   |                    |  |
|---|--------------------|--|
| Name:<br>ACS37041 Current Sensor Micro Carriers |                    | Item number:<br>5440 - 5443  |
| Drawing date:<br>19 March 2025                  | Dev code:<br>cs08a | <br>© 2025 Pololu Corporation |
| Units: mm [mil]                                 | Material:<br>mixed |  |



- 1.** Intended for #2 and M2 screws.
- 2.** Intended for #6 and M3.5 screws and 10 AWG or thinner wire.
- 3.** Intended for #2 and M2 screws and 14 AWG or thinner wire.
- 4.** Grid lines indicate 2.54 mm [100 mil] spacing.
- 5.** To get the specified scale, select 100% in print settings.
- 6.** Drill location tolerance:  $\pm 0.1$  [ $\pm 5$ ].
- 7.** Board edge tolerance:  $\pm 0.3$  [ $\pm 10$ ].

|   |                             |
|---|-----------------------------|
| <a href="https://www.pololu.com/category/339">https://www.pololu.com/category/339</a> |                             |
| Name:<br>ACS37041 Current Sensor Compact Carriers                                     | Item number:<br>5444 - 5447 |
| Drawing date:<br>19 March 2025  | Dev code:<br>cs08b          |
| Units: mm [mil]   | Material:<br>mixed          |

