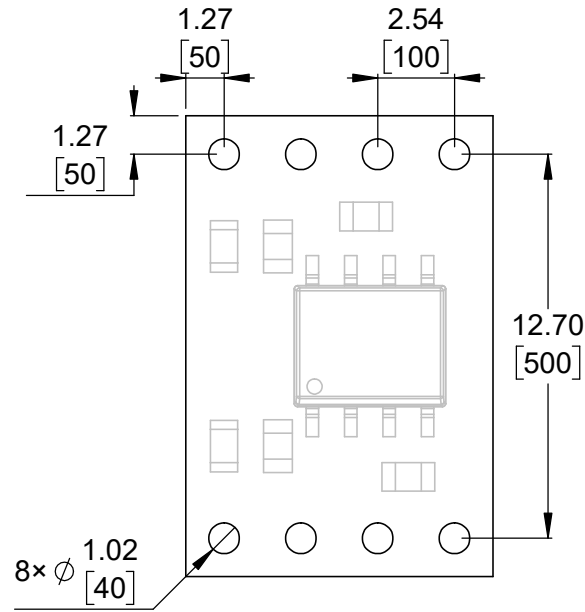
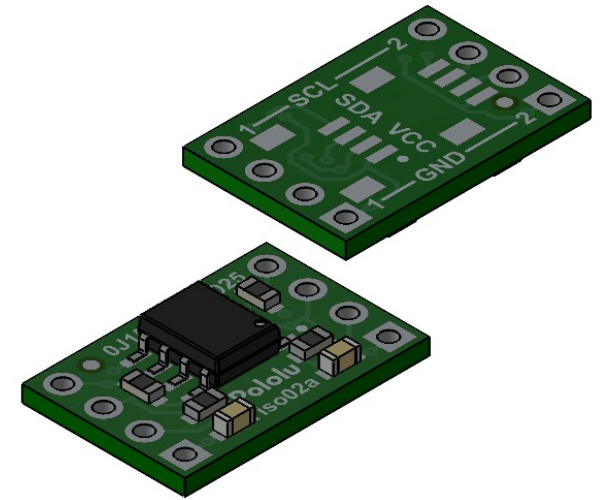


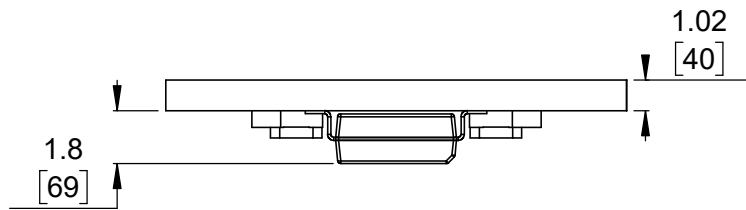
① Board dimensions (top view)
Scale 4:1



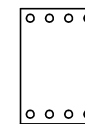
② Connector callouts (bottom view)
Scale 4:1



③ Isometric view
Scale 3:1



④ Profile
Scale 4:1



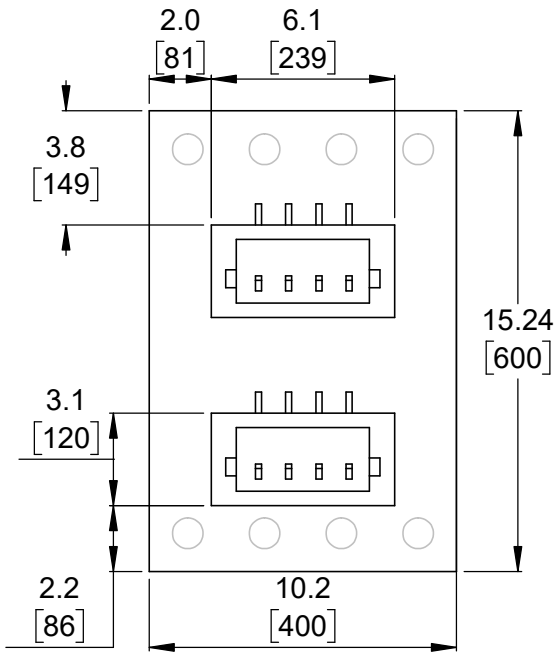
⑤ Actual size
Scale 1:1

1. To get the specified scale, select 100% in print settings.
2. Drill location tolerance: ± 0.1 [± 5].
3. Board edge tolerance: ± 0.3 [± 10].

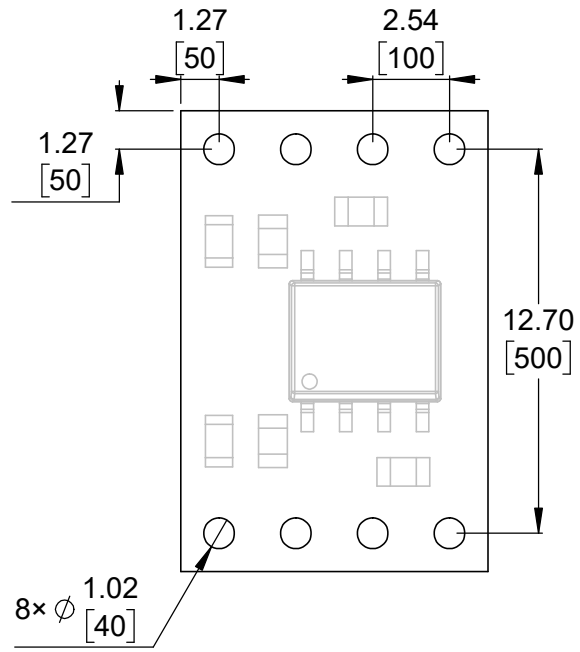
<https://www.pololu.com/product/5390>

Name: Pololu I ² C Isolator, ISO1640		Item number: 5390	
Drawing date: 12 February 2025		Dev code: iso02a	
Units: mm [mil]	Material: mixed		

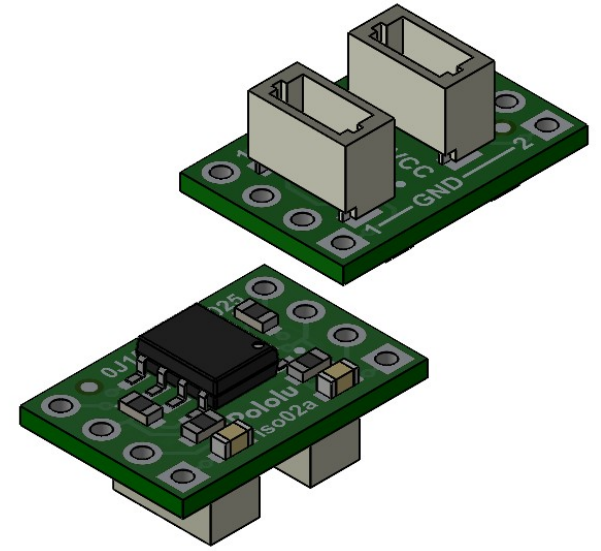




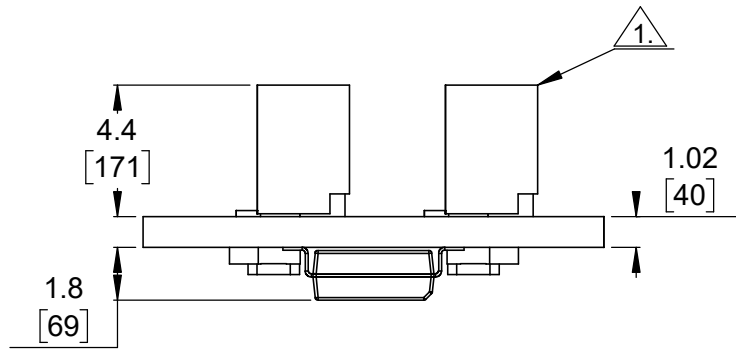
① Board dimensions (top view)
Scale 4:1



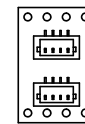
② Connector callouts (bottom view)
Scale 4:1



③ Isometric view
Scale 3:1



④ Profile
Scale 4:1




⑤ Actual size
Scale 1:1

①. Top-entry, 6-pin male JST SH-type connectors.

- 2. To get the specified scale, select 100% in print settings.
- 3. Drill location tolerance: ± 0.1 [± 5].
- 4. Board edge tolerance: ± 0.3 [± 10].

<https://www.pololu.com/product/5391>

Name: Pololu I ² C Isolator with Connectors, ISO1640		Item number: 5391
Drawing date: 12 February 2025	Dev code: iso02a	 © 2025 Pololu Corporation
Units: mm [mil]	Material: mixed	