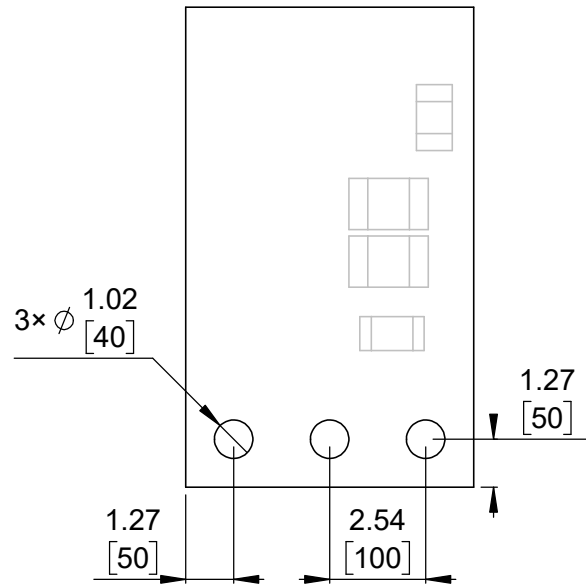
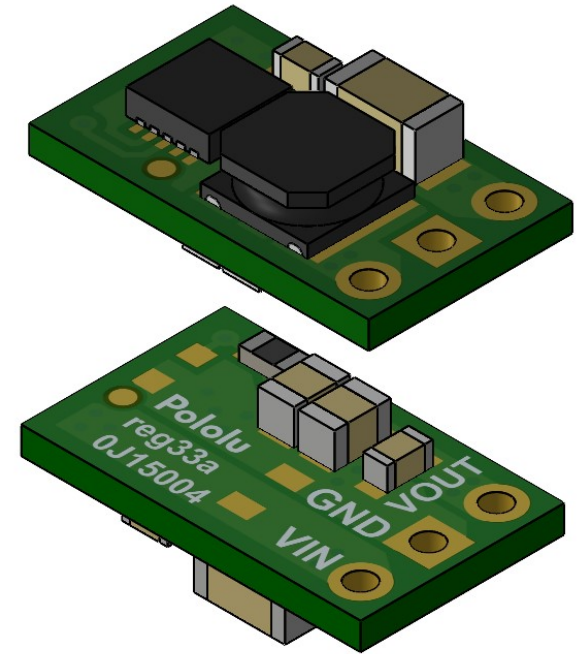


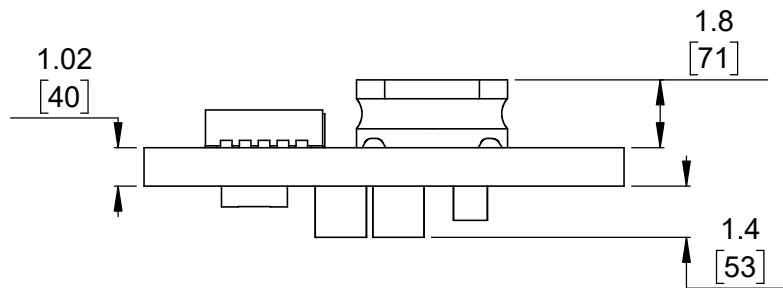
1 Board dimensions (top view)
Scale 5:1



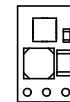
2 Connector callouts (bottom view)
Scale 5:1



3 Isometric view
Scale 5:1




4 Profile
Scale 5:1

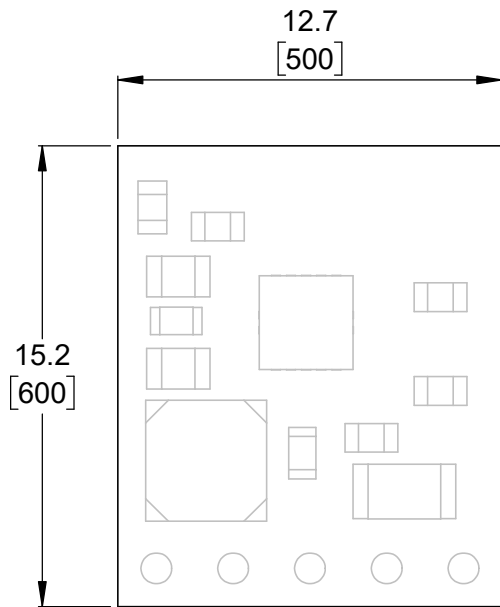


5 Actual size
Scale 1:1

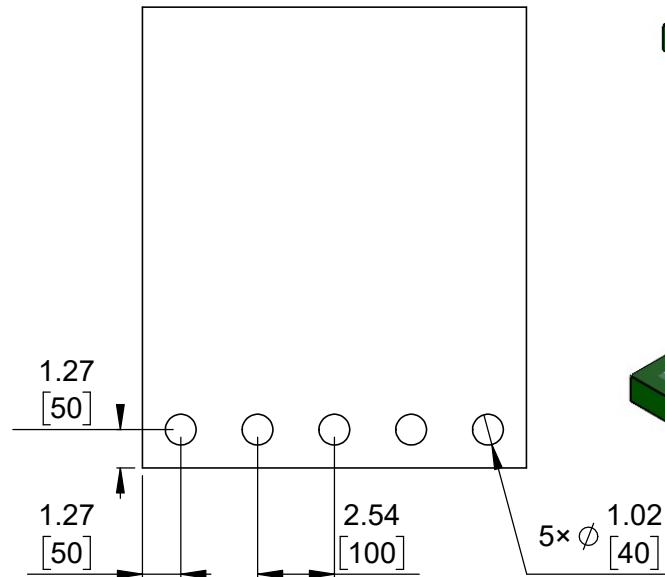
1. To get the specified scale, select 100% in print settings.
2. Drill location tolerance: ± 0.1 [± 5].
3. Board edge tolerance: ± 0.3 [± 10].

<https://www.pololu.com/category/328>

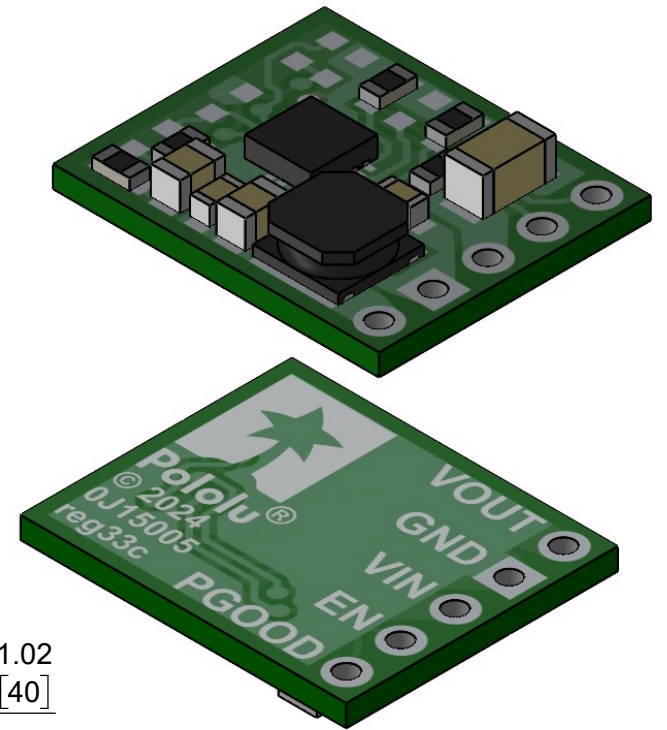
| | | |
|---|---------------------|--|
| Name: Step-Down Voltage Regulator D45V1E1Fx | | Item number: 5360-5369 |
| Drawing date: 14 October 2024 | Dev code: reg33a |  © 2024 Pololu Corporation |
| Units: mm [mil] | Material: mixed | |



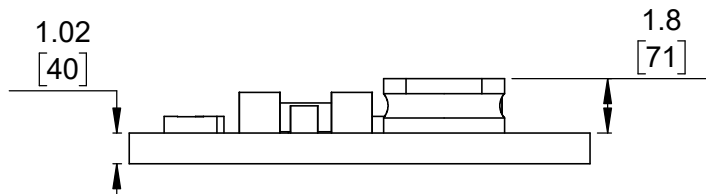
① Board dimensions (top view)
Scale 4:1



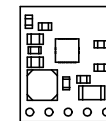
② Connector callouts (bottom view)
Scale 4:1



③ Isometric view
Scale 4:1




④ Profile
Scale 4:1



⑤ Actual size
Scale 1:1

1. To get the specified scale, select 100% in print settings.
2. Drill location tolerance: ± 0.1 [± 5].
3. Board edge tolerance: ± 0.3 [± 10].

<https://www.pololu.com/category/328>

| | | |
|---|---------------------|--|
| Name: Step-Down Voltage Regulator D45V1E2Fx | | Item number: 5370-5379 |
| Drawing date: 14 October 2024 | Dev code: reg33c |  © 2024 Pololu Corporation |
| Units: mm [mil] | Material: mixed | |