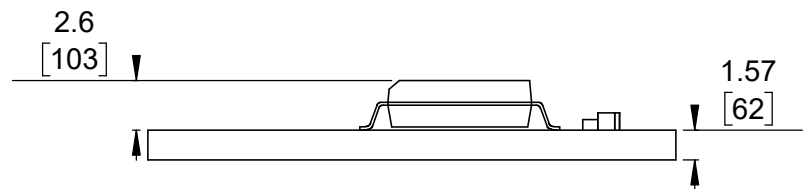


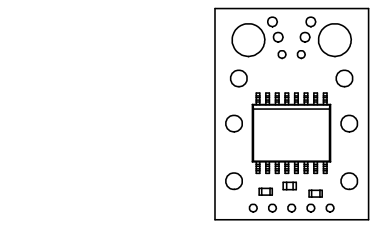
3 Isometric view
Scale 2:1

1 Board dimensions (top view)
Scale 5:2

2 Connector callouts (bottom view)
Scale 5:2



4 Profile
Scale 5:2

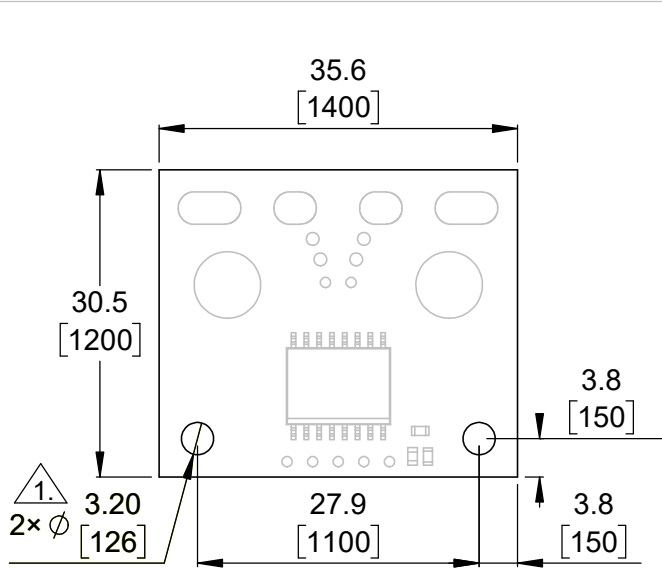


5 Actual size
Scale 1:1

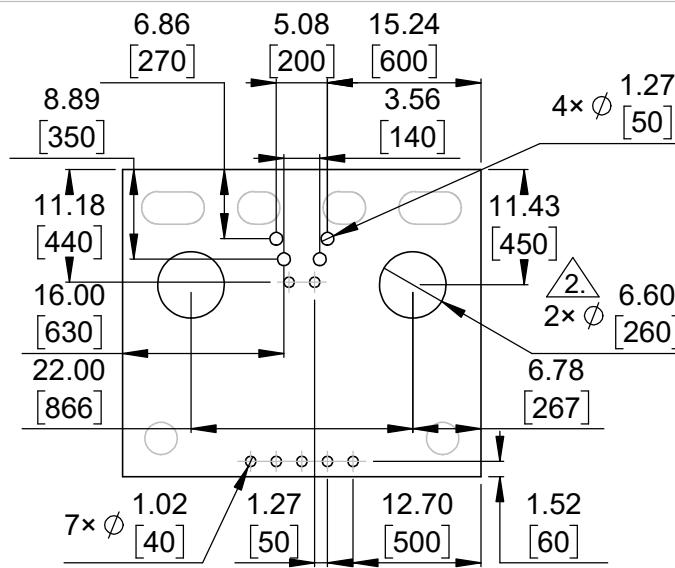
- 1. Intended for #2 and M2 screws.
- 2. Intended for #8 and M4 screws and 8 AWG or thinner wire.
- 3. Intended for #2 and M2 screws and 14 AWG or thinner wire.
- 4. Grid lines indicate 2.54 mm [100 mil] spacing.
- 5. To get the specified scale, select 100% in print settings.
- 6. Drill location tolerance: ± 0.1 [± 5].
- 7. Board edge tolerance: ± 0.3 [± 10].

| | |
|---|---------------------------|
| https://www.pololu.com/category/323 | |
| Name: CT432/CT433 TMR Current Sensor Compact Carriers | Item number: 5300-5319 |
| Drawing date: 7 April 2026 | Dev code: cs07a, cs07b |
| Units: mm [mil] | Material: mixed |

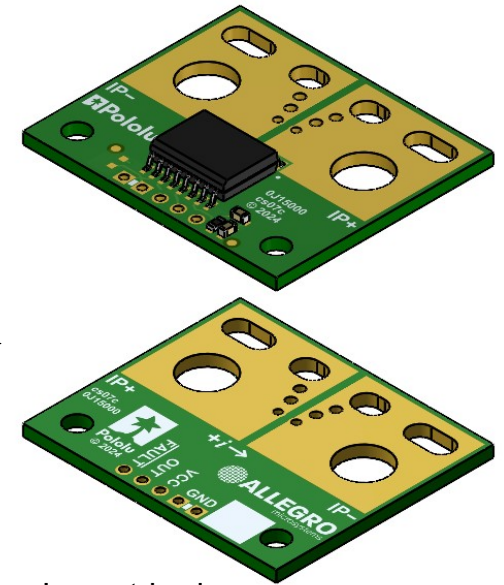




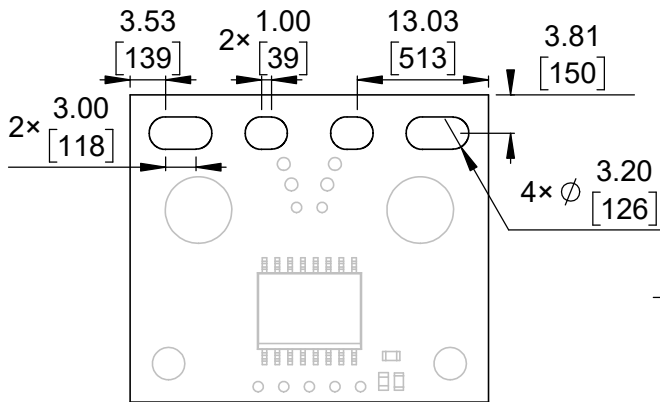
① Board dimensions (top view)
Scale 4:3



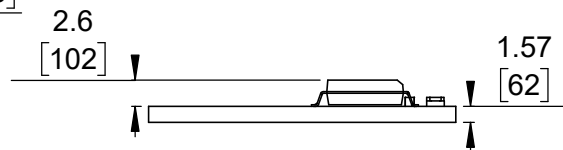
② Connector callouts (bottom view)
Scale 4:3



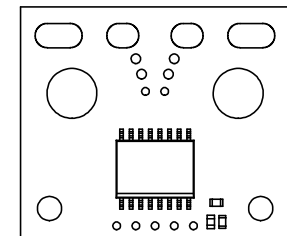
③ Isometric view
Scale 4:3



④ Connector callouts (slots) ③
Scale 4:3



⑤ Profile
Scale 4:3



⑥ Actual size
Scale 1:1

- ①. Intended for #4 and M3 screws.
- ②. Intended for 1/4" and M6 screws and 4 AWG or thinner wire.
- ③. Slots intended for 7.5 mm to 9.5 mm pitch connectors.
- 4. Grid lines indicate 2.54 mm [100 mil] spacing.
- 5. To get the specified scale, select 100% in print settings.
- 6. Drill location tolerance: ± 0.1 [± 5].
- 7. Board edge tolerance: ± 0.3 [± 10].

<https://www.pololu.com/category/324>

| | | |
|---|--------------------|-------------------------------|
| Name: CT432/CT433 TMR Current Sensor Large Carriers | | Item number: 5320-5339 |
| Drawing date: 7 April 2026 | Dev code: cs07c | © 2026 Pololu Corporation |
| Units: mm [mil] | Material: mixed | |