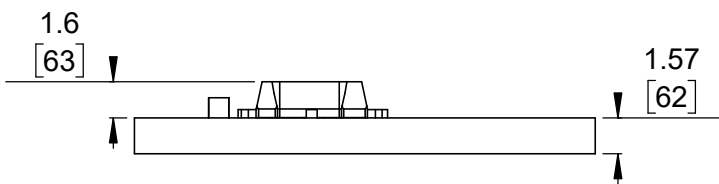
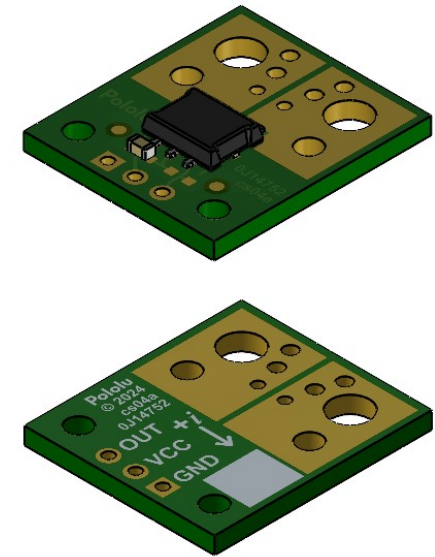


① Board dimensions (top view)
Scale 3:1

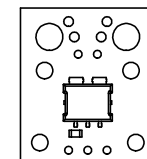
② Connector callouts (bottom view)
Scale 3:1

③ Isometric view
Scale 2:1




④ Profile
Scale 3:1

⑤ Actual size
Scale 1:1



- ①. Intended for #2 and M2 screws.
- ②. Intended for #6 screws and 8 AWG or thinner wire.
- ③. Intended for #2 and M2 screws and 12 AWG or thinner wire.
- 4. Grid lines indicate 2.54 mm [100 mil] spacing.
- 5. To get the specified scale, select 100% in print settings.
- 6. Drill location tolerance: ± 0.1 [± 5].
- 7. Board edge tolerance: ± 0.3 [± 10].

<https://www.pololu.com/category/313>

Name: ACS72981xLR Current Sensor Compact Carriers		Item number: 5250-5264
Drawing date: 30 April 2024	Dev code: cs04a	 © 2024 Pololu Corporation
Units: mm [mil]	Material: mixed	