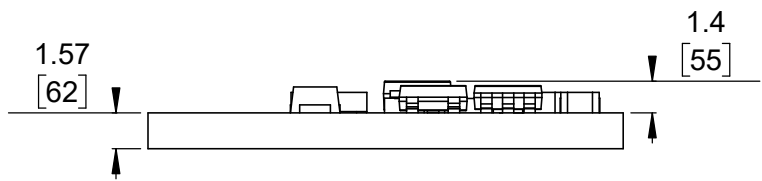


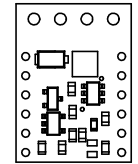
① Board dimensions (top view)
Scale 3:1

② Connector callouts (bottom view)
Scale 3:1

③ Isometric view
Scale 3:1



④ Profile
Scale 3:1



⑤ Actual size
Scale 1:1

- To get the specified scale, select 100% in print settings.
- Drill location tolerance: ± 0.1 [± 5].
- Board edge tolerance: ± 0.3 [± 10].

https://www.pololu.com/product/2803	
Name: Pololu RC Switch with Medium Low-Side MOSFET	Item number: 2803
Drawing date: 11 January 2024	Dev code: rcs02d
Units: mm [mil]	Material: mixed

