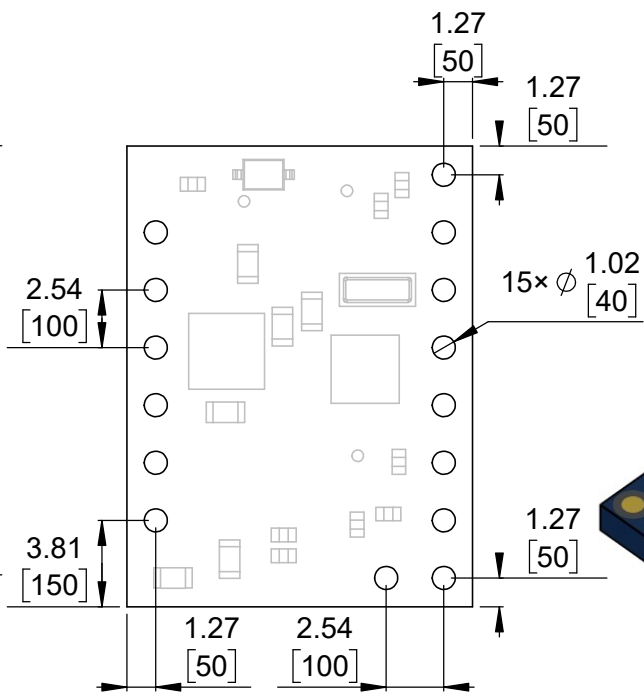
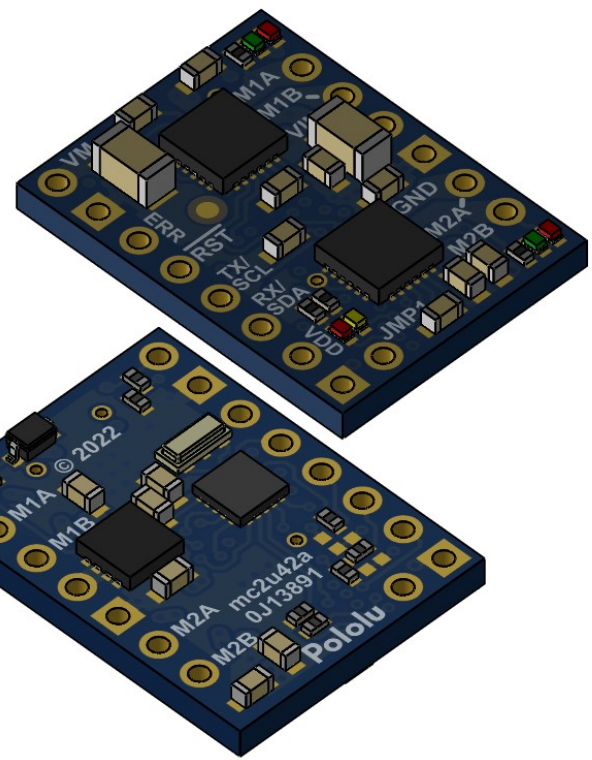


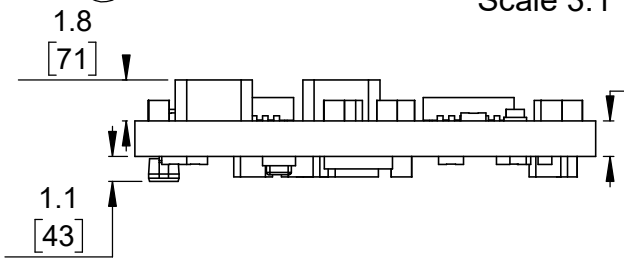
① Board dimensions (top view)
Scale 3:1



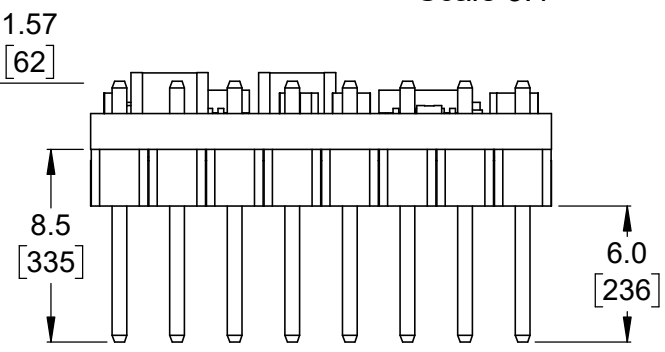
② Connector callouts (bottom view)
Scale 3:1



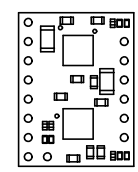
③ Isometric view
Scale 3:1



④ Profile
Scale 3:1



⑤ Profile with headers
Scale 3:1



⑥ Actual size
Scale 1:1

1. To get the specified scale, select 100% in print settings.
2. Drill location tolerance: ± 0.1 [± 5].
3. Board edge tolerance: ± 0.3 [± 10].

https://www.pololu.com/category/295	
Name: Motoron M2x256 Dual Motor Controller	Item number: 5064-5067
Drawing date: 14 November 2022	Dev code: mc2u42a
Units: mm [mil]	Material: mixed

