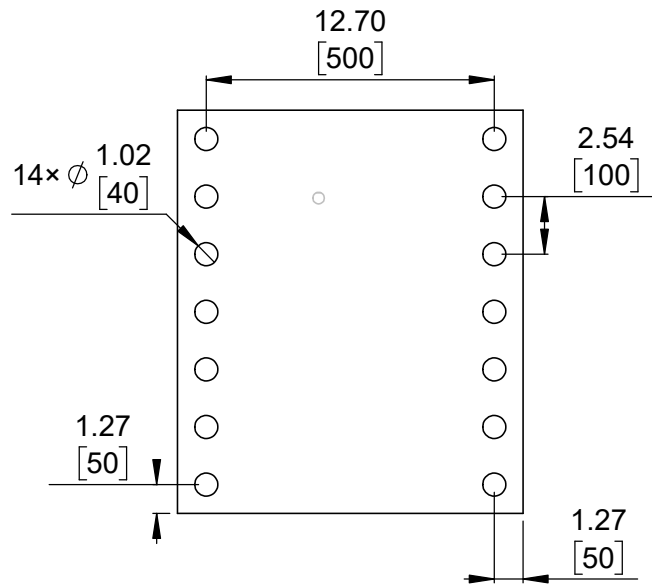
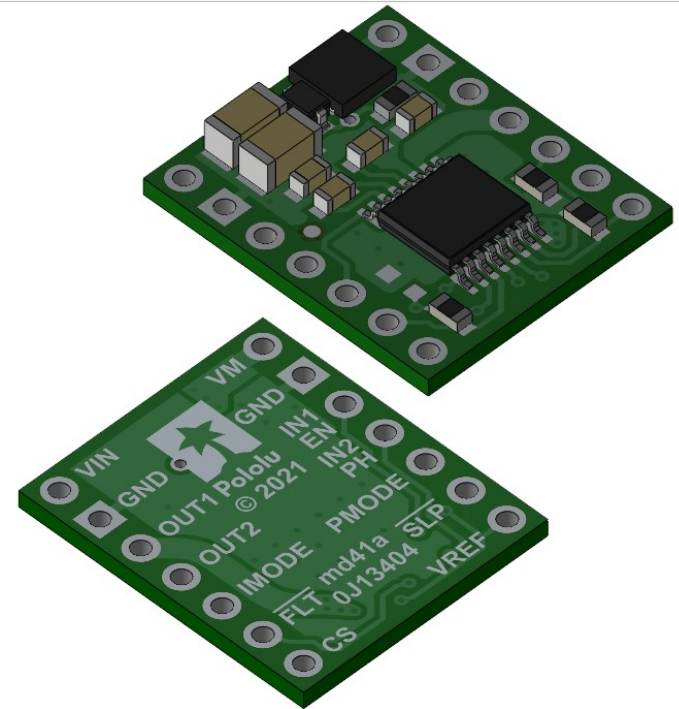


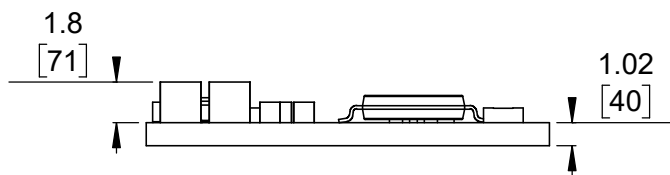
① Board dimensions (top view)  
Scale 3:1



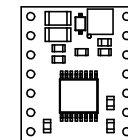
② Connector callouts (bottom view)  
Scale 3:1



③ Isometric view  
Scale 3:1



④ Profile  
Scale 3:1



⑤ Actual size  
Scale 1:1

- To get the specified scale, select 100% in print settings.
- Drill location tolerance:  $\pm 0.1$  [ $\pm 5$ ].
- Board edge tolerance:  $\pm 0.3$  [ $\pm 10$ ].

<https://www.pololu.com/product/4035>

Name: DRV887x Single Brushed DC Motor Driver Carrier		Item number: 4035, 4036
Drawing date: 14 April 2022	Dev code: md41a	 © 2022 Pololu Corporation
Units: mm [mil]	Material: mixed	