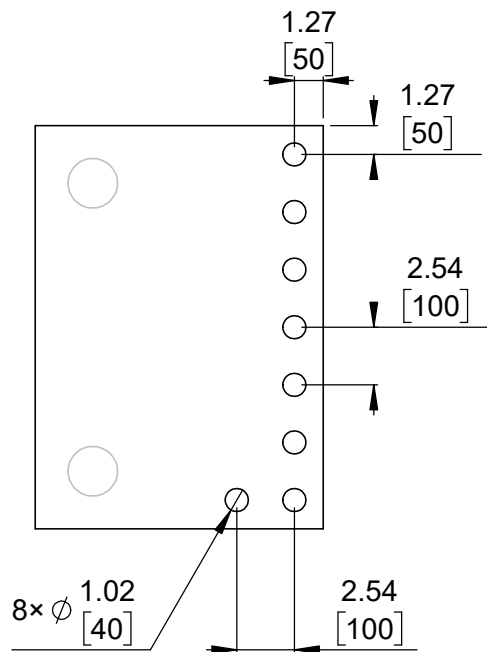
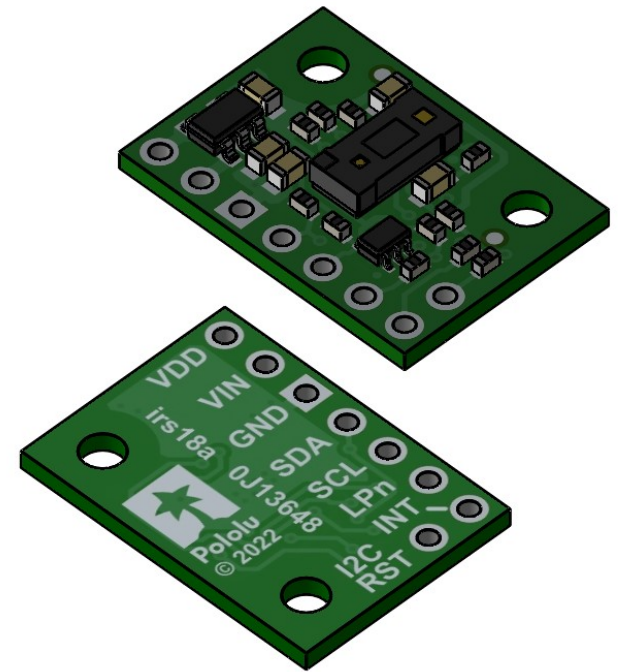


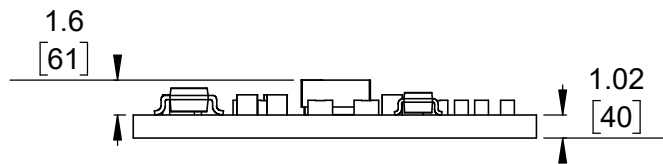
① Board dimensions (top view)
Scale 3:1



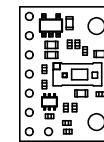
② Connector callouts (bottom view)
Scale 3:1



③ Isometric view
Scale 3:1




④ Profile
Scale 3:1



⑤ Actual size
Scale 1:1

- ①. Intended for #2 and M2 screws.
- ②. To get the specified scale, select 100% in print settings.
- ③. Drill location tolerance: ± 0.1 [± 5].
- ④. Board edge tolerance: ± 0.3 [± 10].

<https://www.pololu.com/product/3417>

Name: VL53L5CX Time-of-Flight 8x8 Zone Distance Sensor Carrier with Voltage Regulator, 400cm Max		Item number: 3417
Drawing date: 31 March 2022	Dev code: irs18a	 © 2022 Pololu Corporation
Units: mm [mil]	Material: mixed	