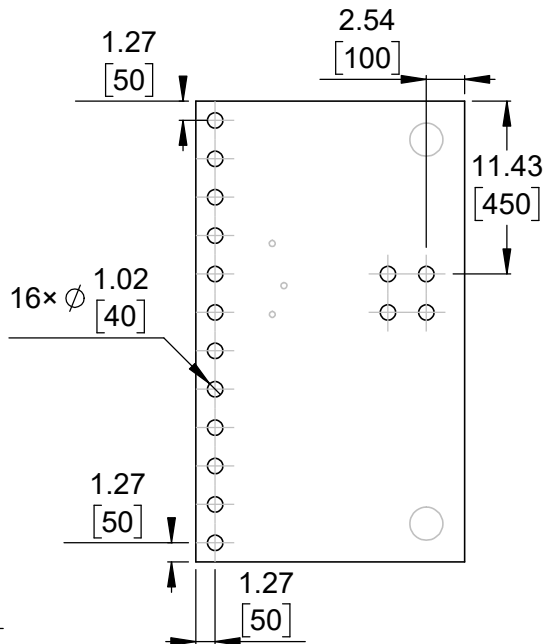
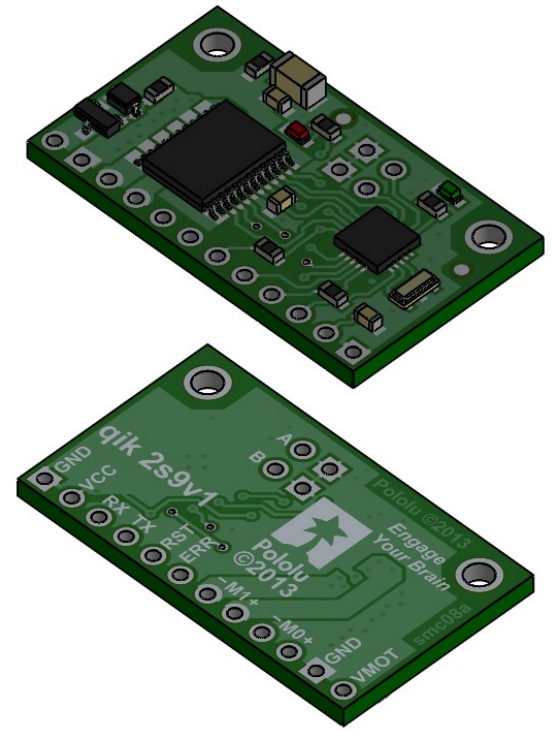


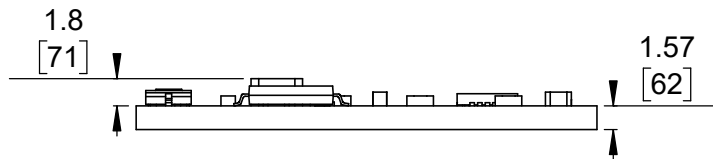
① Board dimensions (top view)
Scale 2:1



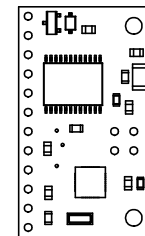
② Connector callouts (bottom view)
Scale 2:1



③ Isometric view
Scale 2:1




④ Profile
Scale 2:1



⑤ Actual size
Scale 1:1

1. Intended for M3 or #4 screws.
2. Grid lines indicate 2.54mm [100 mil] spacing.
3. To get the specified scale, select 100% in print settings.
4. Drill location tolerance: ± 0.1 [± 5].
5. Board edge tolerance: ± 0.3 [± 10].

<https://www.pololu.com/product/1110>

Name: Pololu Qik 2s9v1 Dual Serial Motor Controller		Item number: 1110
Drawing date: 8 February 2022	Dev code: smc08a	 © 2022 Pololu Corporation
Units: mm [mil]	Material: mixed	