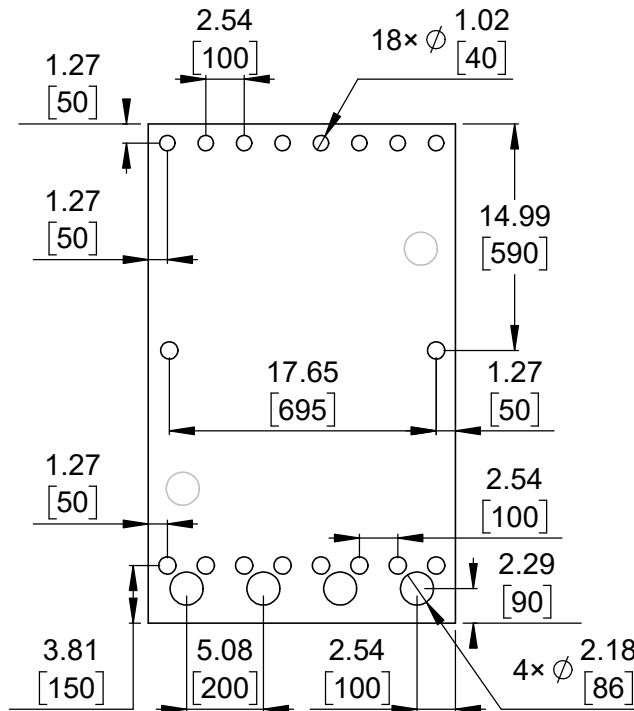
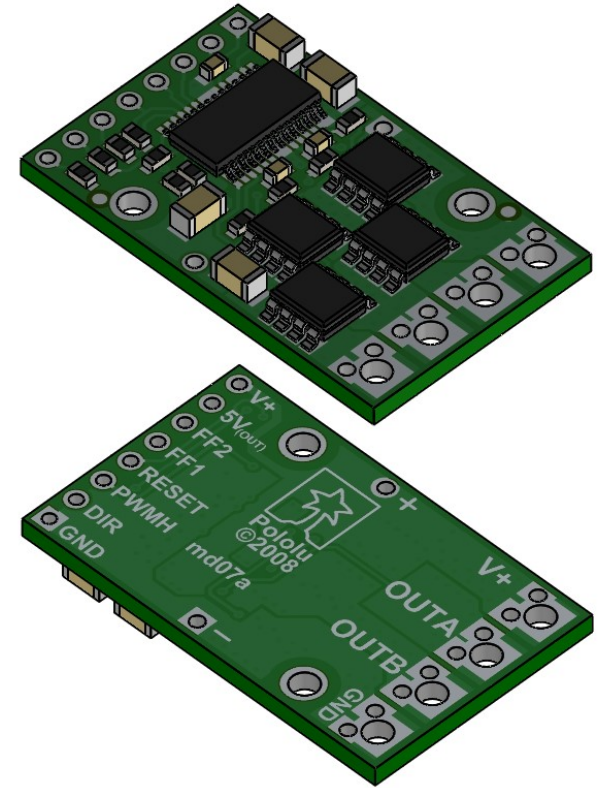


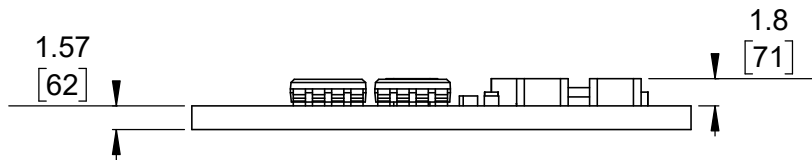
① Board dimensions (top view)
Scale 2:1



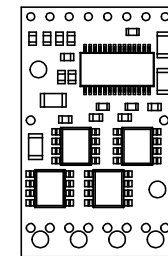
② Connector callouts (bottom view)
Scale 2:1



③ Isometric view
Scale:2:1




④ Profile
Scale 2:1



⑤ Actual size
Scale 1:1

1. Intended for #2 and M2 screws.
2. To get the specified scale, select 100% in print settings.
3. Drill location tolerance: ± 0.1 [± 5].
4. Board edge tolerance: ± 0.3 [± 10].

<https://www.pololu.com/product/756>

Name: Pololu High-Power Motor Driver 36v9 and 18v15		Item number: 755, 756
Drawing date: 4 January 2022	Dev code: md07a	 © 2022 Pololu Corporation
Units: mm [mil]	Material: mixed	