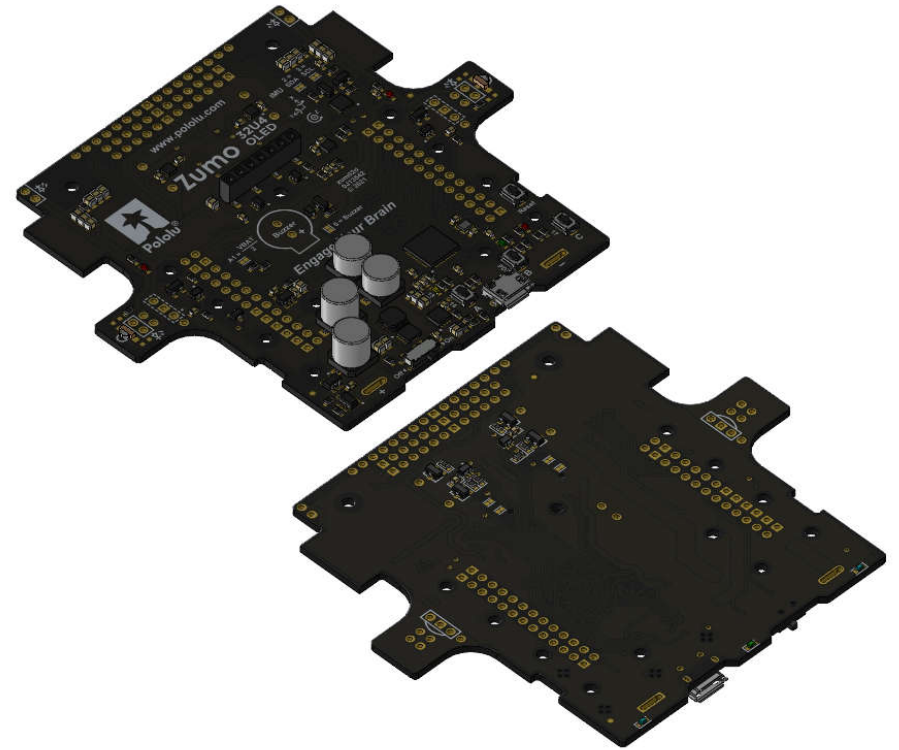
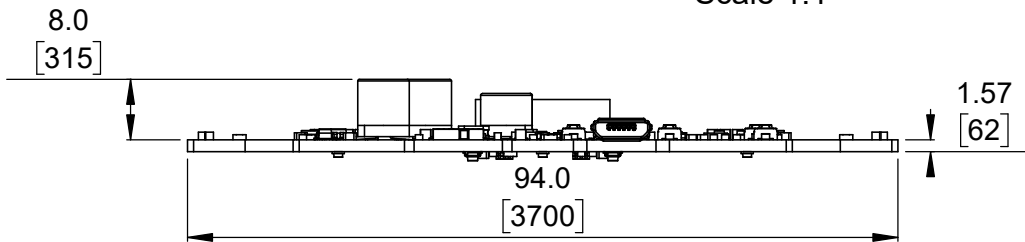


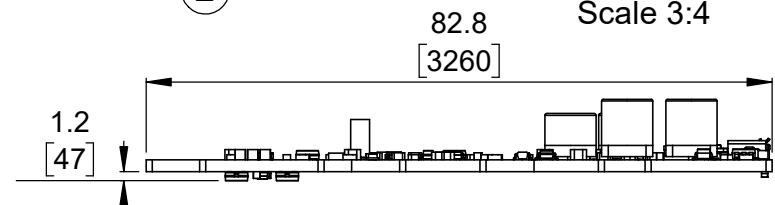
① Top view (actual size)  
Scale 1:1



② Isometric view  
Scale 3:4




③ Long profile  
Scale 1:1

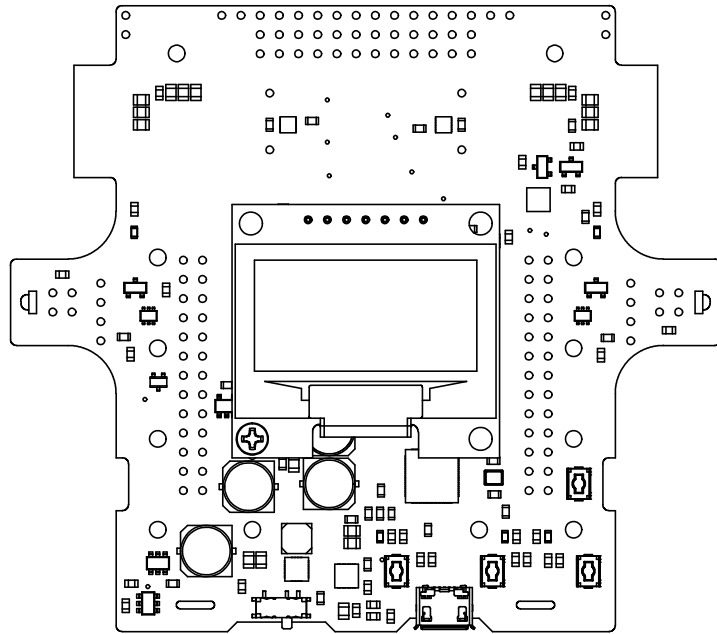


④ Short profile  
Scale 1:1

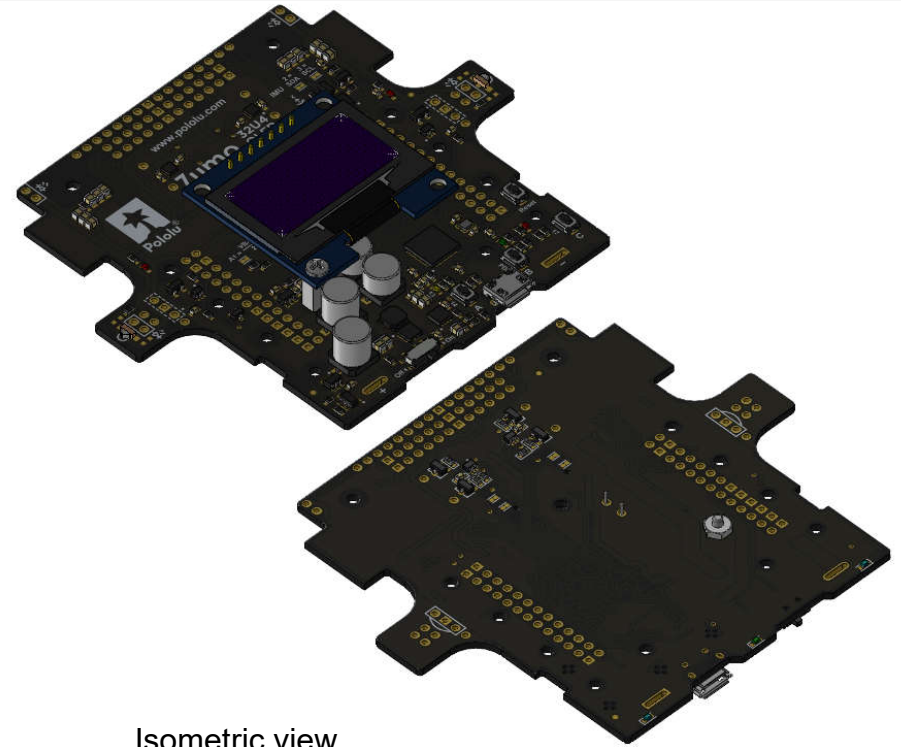
1. To get the specified scale, select 100% in print settings.
2. Drill location tolerance:  $\pm 0.1$  [ $\pm 5$ ].
3. Board edge tolerance:  $\pm 0.3$  [ $\pm 10$ ].

<https://www.pololu.com/product/4994>

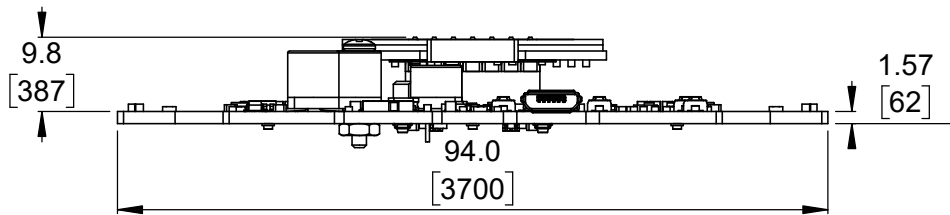
Name: Zumo 32U4 OLED Main Board		Item number: 4994
Drawing date: 19 November 2021	Dev code: zum02d	 © 2021 Pololu Corporation
Units: mm [mil]	Material: mixed	



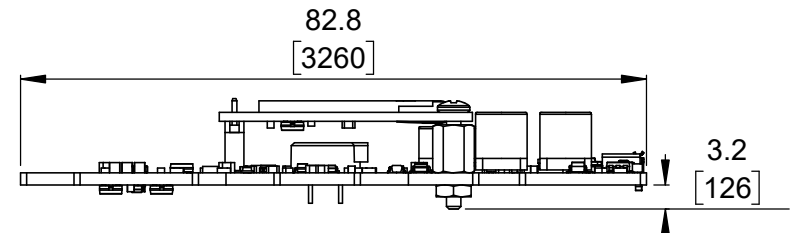
① Top view (actual size)  
(with optional buzzer and OLED display)  
Scale 1:1



② Isometric view  
(with optional buzzer and OLED display)  
Scale 3:4




③ Long profile  
(with optional buzzer and OLED display)  
Scale 1:1



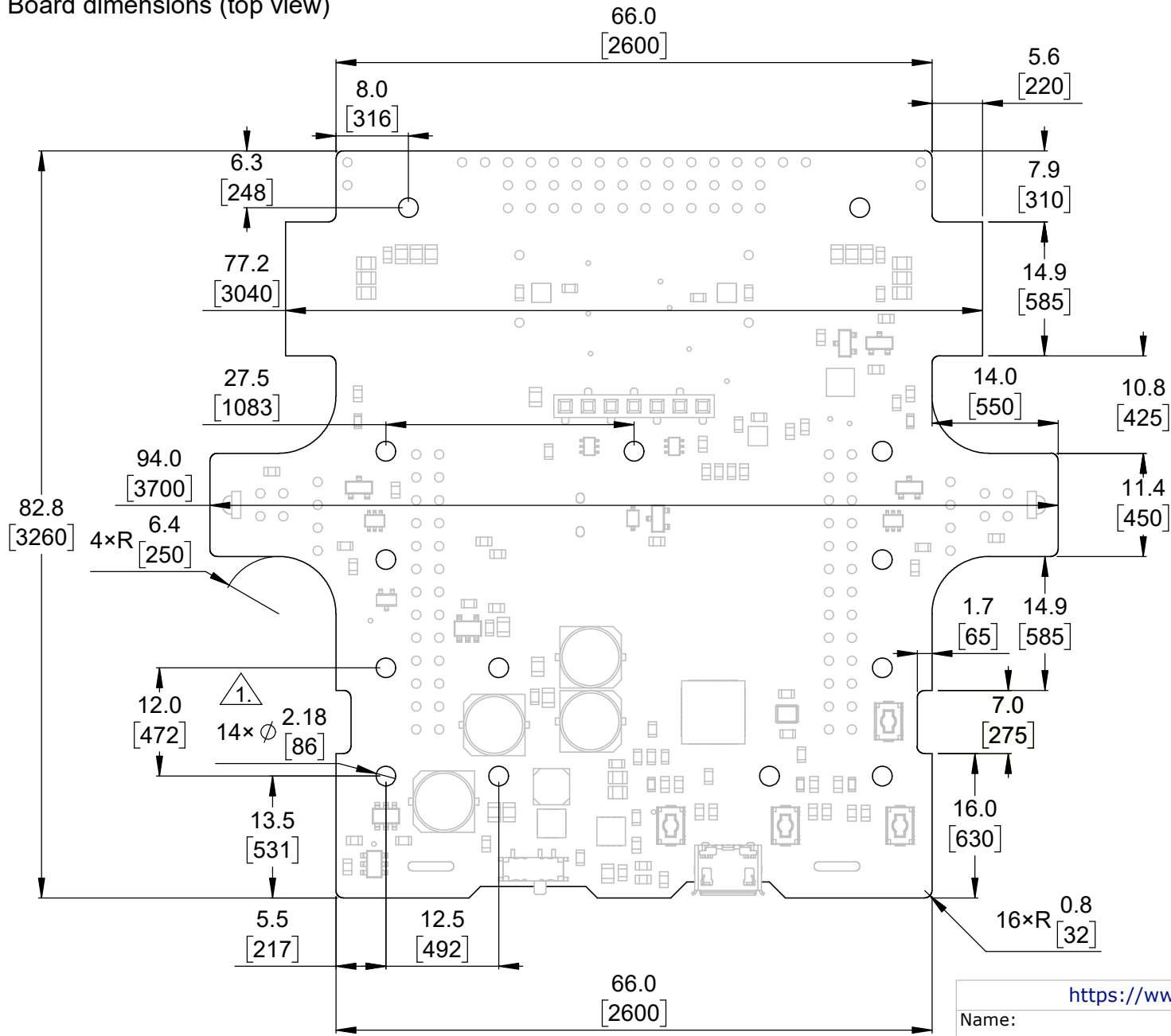
④ Short profile  
(with optional buzzer and OLED display)  
Scale 1:1

1. To get the specified scale, select 100% in print settings.
2. Drill location tolerance:  $\pm 0.1$  [ $\pm 5$ ].
3. Board edge tolerance:  $\pm 0.3$  [ $\pm 10$ ].

<https://www.pololu.com/product/4994>

Name: Zumo 32U4 OLED Main Board		Item number: 4994	
Drawing date: 19 November 2021	Dev code: zum02d	 © 2021 Pololu Corporation	
Units: mm [mil]	Material: mixed		


Board dimensions (top view)

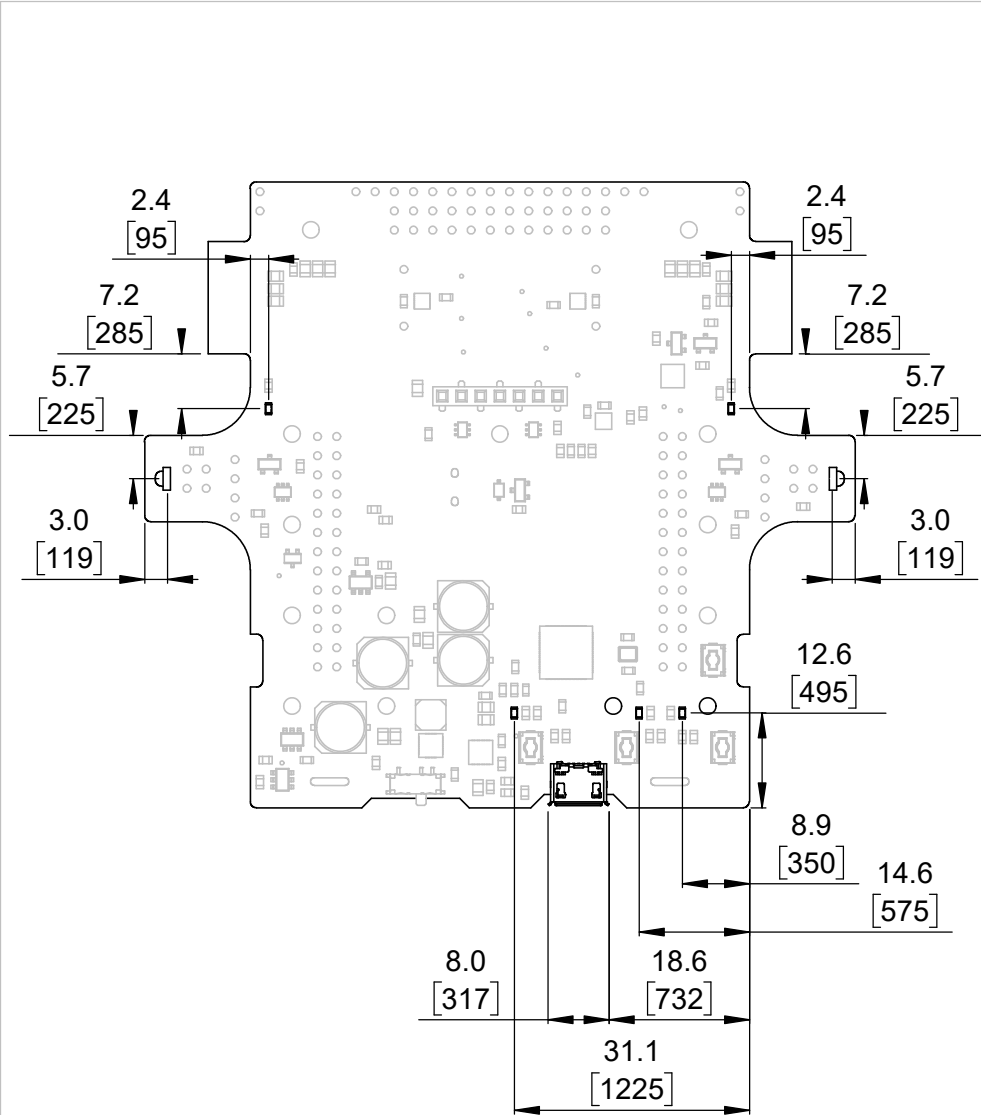


1. Intended for #2 and M2 screws.
2. To get the specified scale, select 100% in print settings.
3. Drill location tolerance:  $\pm 0.1$  [ $\pm 5$ ].
4. Board edge tolerance:  $\pm 0.3$  [ $\pm 10$ ].

Scale 3:2

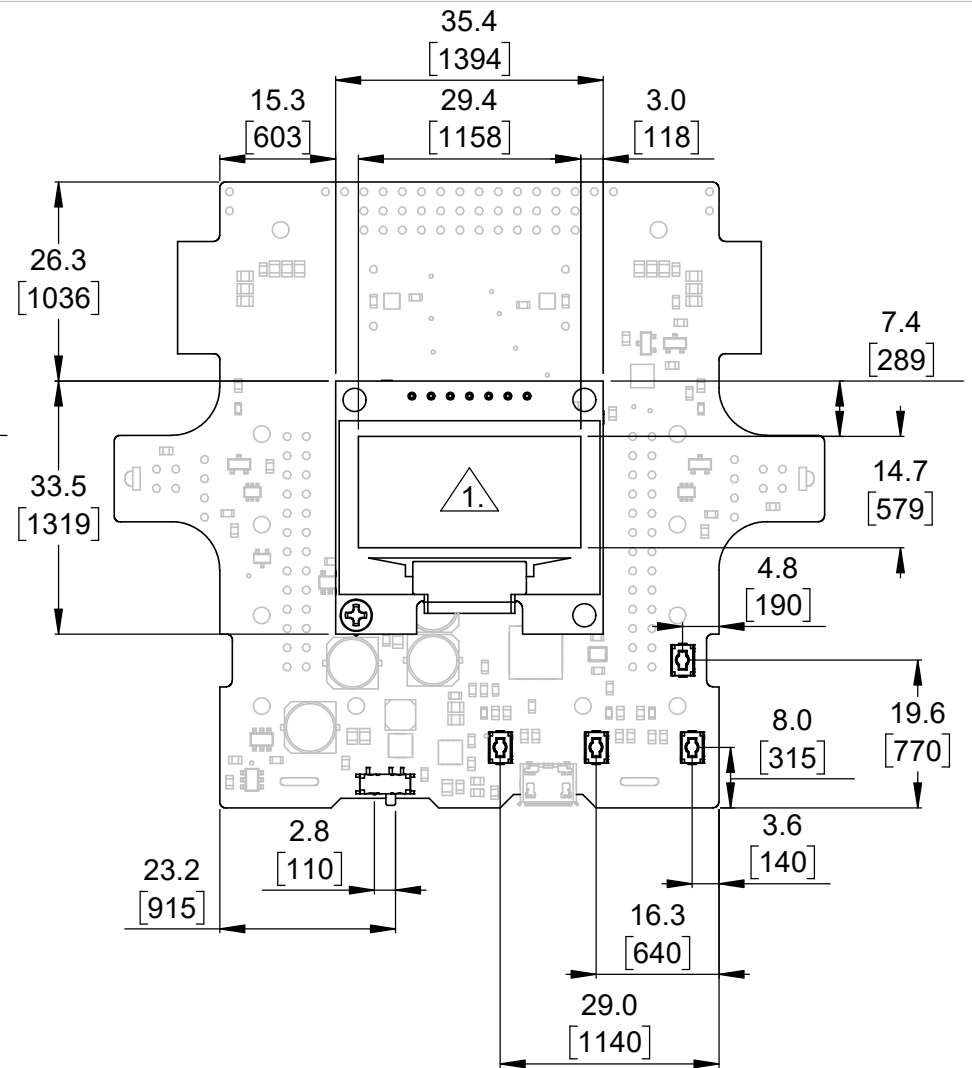
<https://www.pololu.com/product/4994>

Name: Zumo 32U4 OLED Main Board		Item number: 4994
Drawing date: 19 November 2021	Dev code: zum02d	 © 2021 Pololu Corporation
Units: mm [mil]	Material: mixed	



① User interface elements

Scale 1:1



② User interface elements (view with OLED display)

Scale 1:1

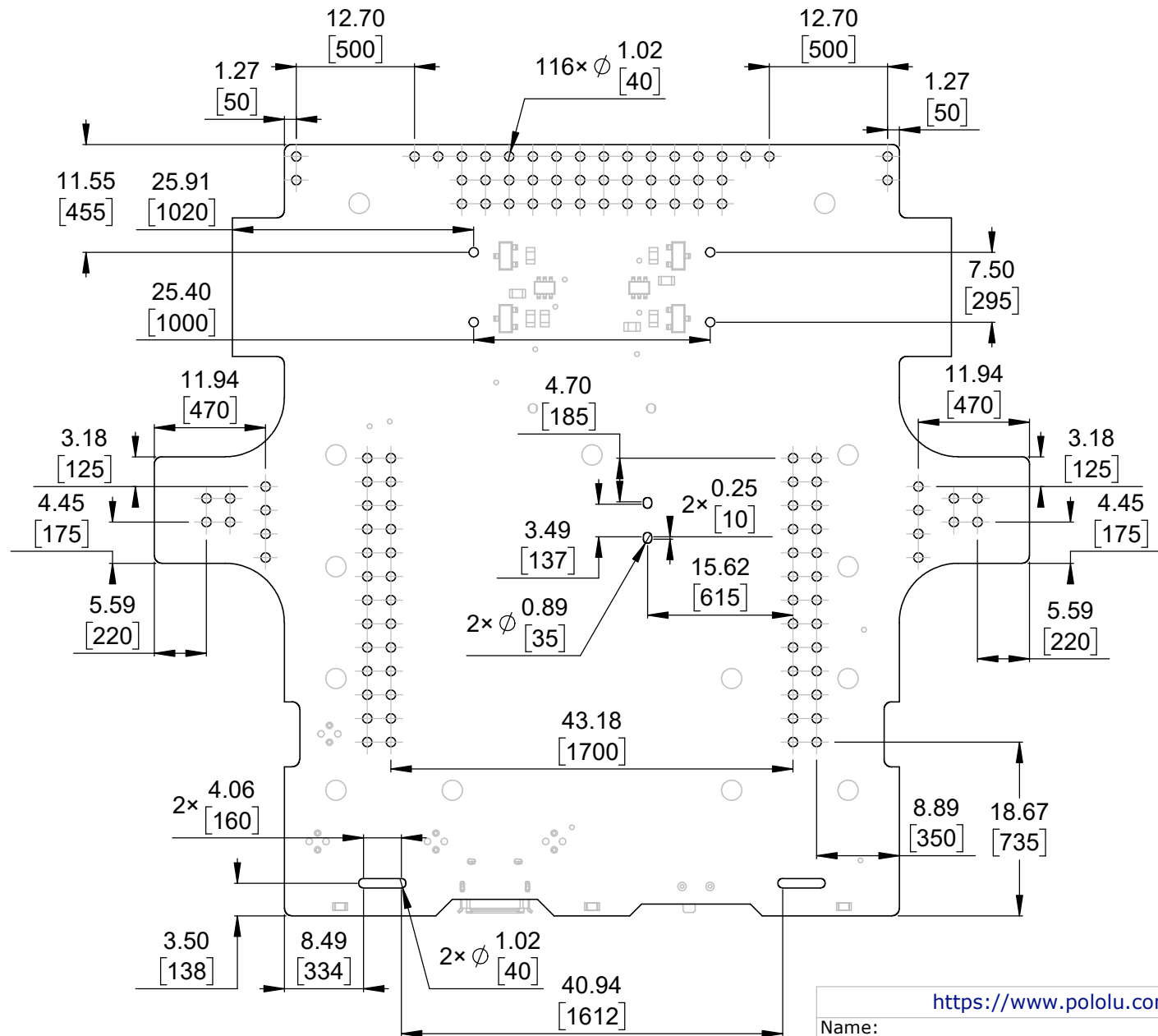
1.

OLED display active area (1.3" diagonal).  
 To get the specified scale, select 100% in print settings.  
 3. Drill location tolerance:  $\pm 0.1$  [ $\pm 5$ ].  
 4. Board edge tolerance:  $\pm 0.3$  [ $\pm 10$ ].

<https://www.pololu.com/product/4994>

Name: Zumo 32U4 OLED Main Board		Item number: 4994
Drawing date: 19 November 2021	Dev code: zum02d	 © 2021 Pololu Corporation
Units: mm [mil]	Material: mixed	

# Connector callouts (bottom view)



1. Grid lines indicate 2.54 mm [100 mil] spacing.
2. To get the specified scale, select 100% in print settings.
3. Drill location tolerance:  $\pm 0.1$  [ $\pm 5$ ].
4. Board edge tolerance:  $\pm 0.3$  [ $\pm 10$ ].

Scale 3:2

<https://www.pololu.com/product/4994>

Name:		Item number:	
Zumo 32U4 OLED Main Board		4994	
Drawing date:	Dev code:	 © 2021 Pololu Corporation	
19 November 2021	zum02d		
Units:	Material:		
mm [mil]	mixed		