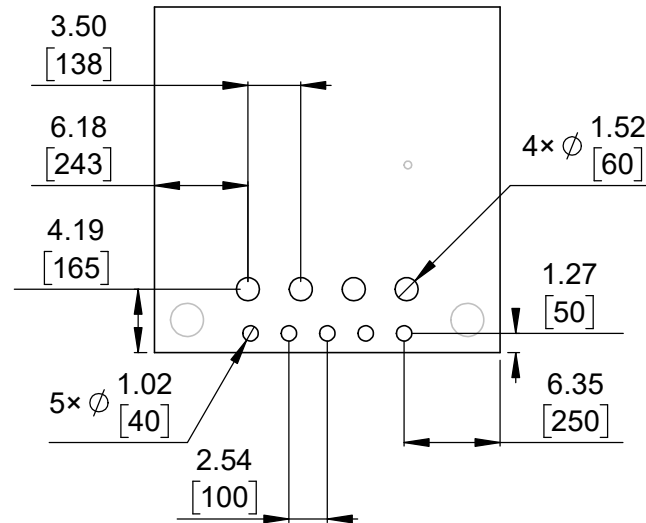
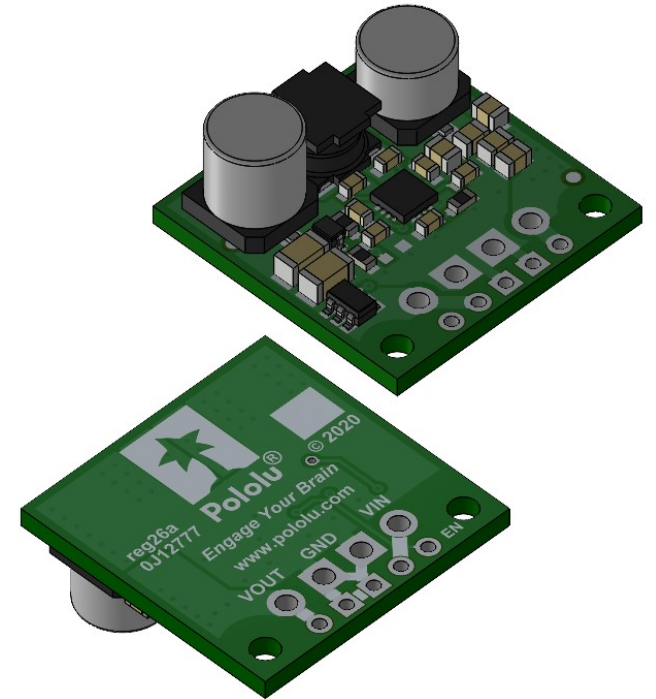


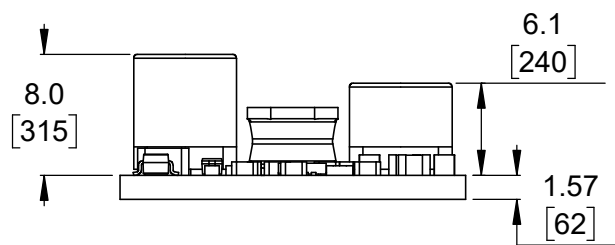
1 Board dimensions (top view)
Scale 2:1



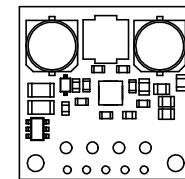
2 Connector callouts (bottom view)
Scale 2:1



3 Isometric view
Scale 2:1



4 Profile
Scale 2:1



5 Actual size
Scale 1:1

- 1. Intended for #2 and M2 screws.
- 2. To get the specified scale, select 100% in print settings.
- 3. Drill location tolerance: ± 0.1 [± 5].
- 4. Board edge tolerance: ± 0.3 [± 10].

<https://www.pololu.com/product/4082>

Name: 5V Step-Up/Step-Down Voltage Regulator S13V30F5		Item number: 4082
Drawing date: 25 May 2021	Dev code: reg26a	
Units: mm [mil]	Material: mixed	

