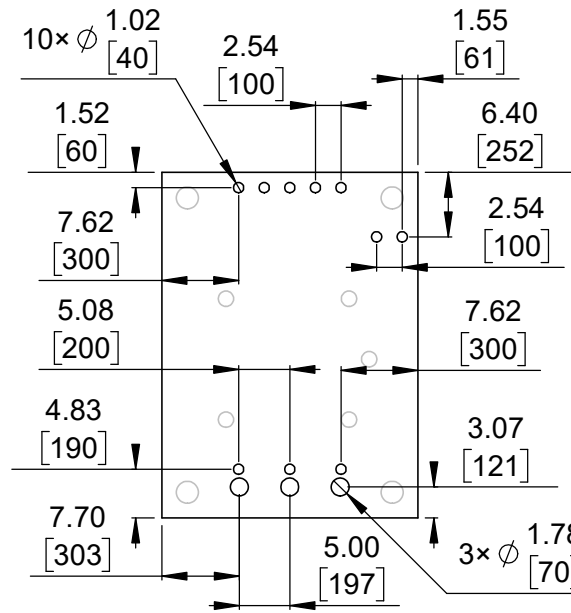
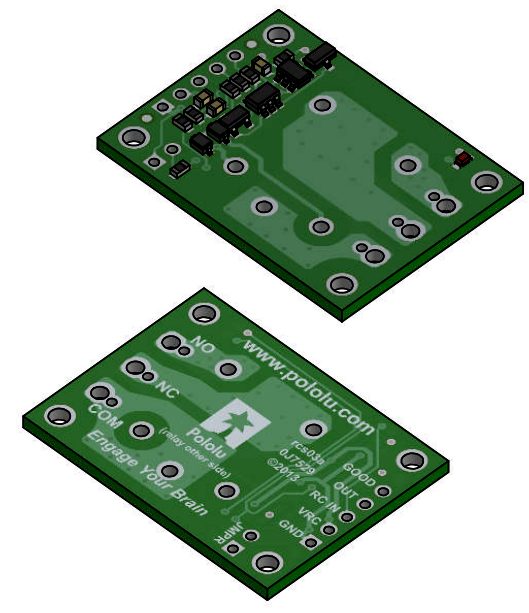


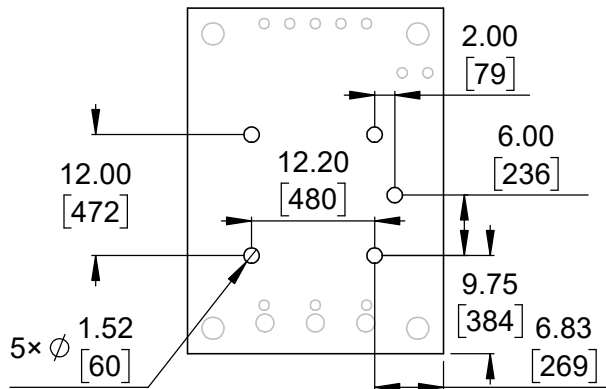
① Board dimensions (top view)  
Scale 4:3



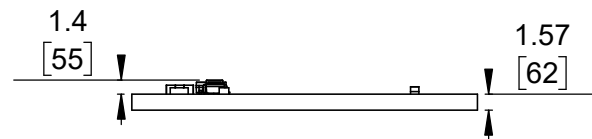
② Connector callouts (bottom view)  
Scale 4:3



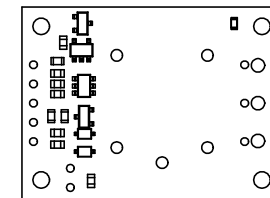
③ Isometric view  
Scale 4:3



④ Relay connector callouts (bottom view)  
Scale 4:3



⑤ Profile  
Scale 4:3

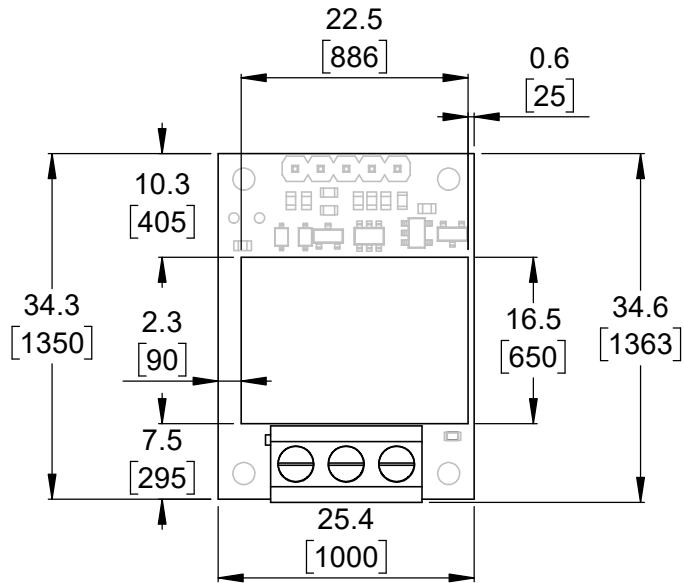


⑥ Actual Size  
Scale 1:1

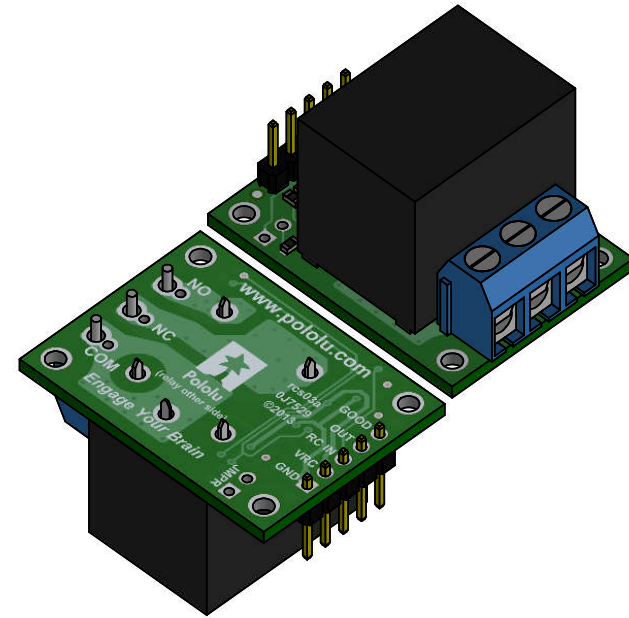
1. Intended for #2 and M2 screws
2. To get the specified scale, select 100% in print settings.
3. Drill location tolerance:  $\pm 0.1$  [ $\pm 5$ ].
4. Board edge tolerance:  $\pm 0.3$  [ $\pm 10$ ].

<a href="https://www.pololu.com/product/2805">https://www.pololu.com/product/2805</a>	
Name: Pololu RC Switch with Relay (Partial Kit)	Item number: 2804, 2805
Drawing date: 8 November 2019	Dev code: rcs03a
Units: mm [mil]	Material: mixed

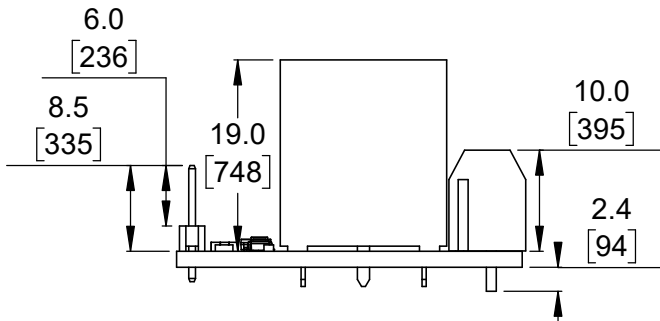




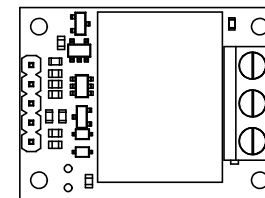
1 Board dimensions (top view) Scale 4:3



2 Isometric view Scale 4:3




3 Profile Scale 4:3



4 Actual size Scale 1:1

- To get the specified scale, select 100% in print settings.
- Drill location tolerance:  $\pm 0.1$  [ $\pm 5$ ].
- Board edge tolerance:  $\pm 0.3$  [ $\pm 10$ ].

<https://www.pololu.com/product/2804>

Name: Pololu RC Switch with Relay (Assembled)		Item number: 2804, 2805
Drawing date: 8 November 2019	Dev code: rcs03a	 © 2019 Pololu Corporation
Units: mm [mil]	Material: mixed	