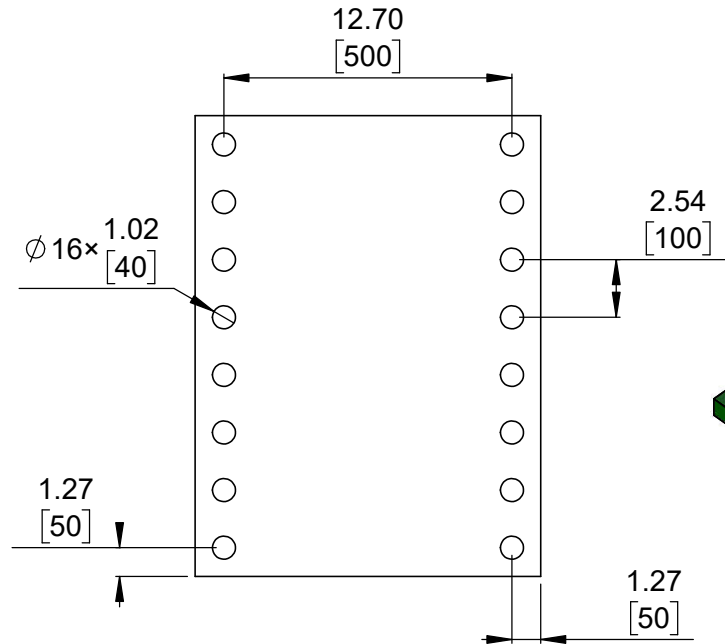
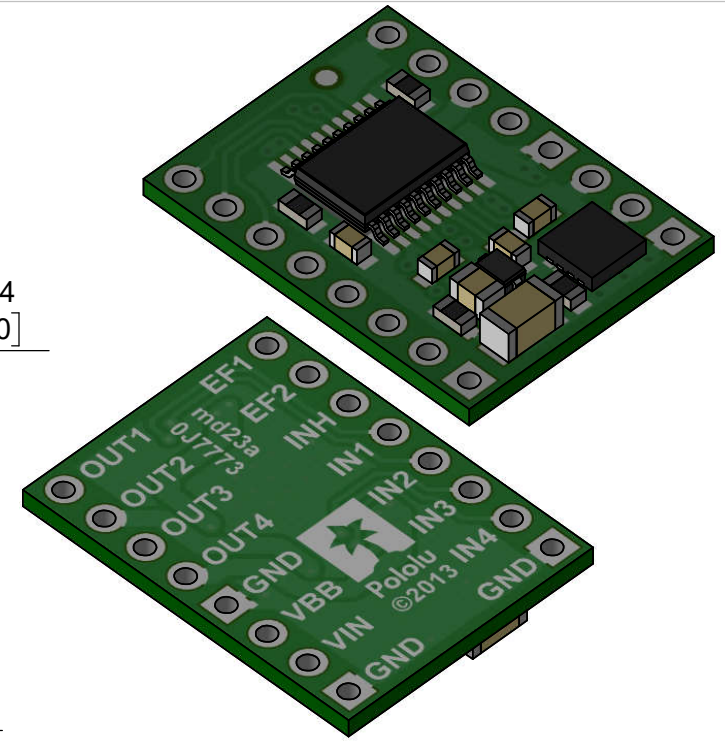


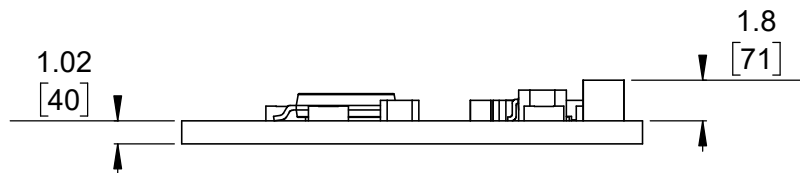
1 Board dimensions (top view)
Scale 3:1



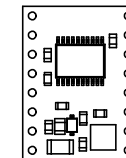
2 Connector callouts (bottom view)
Scale 3:1



3 Isometric view
Scale 3:1



4 Profile
Scale 3:1



5 Actual size
Scale 1:1

1. To get the specified scale, select 100% in print settings.
2. Drill location tolerance: ± 0.1 [± 5].
3. Board edge tolerance: ± 0.3 [± 10].

<https://www.pololu.com/product/2137>

Name: A4990 Dual Motor Driver Carrier		Item number: 2137	
Drawing date: 27 December 2018		Dev code: md23a	
Units: mm [mil]	Material: mixed		

