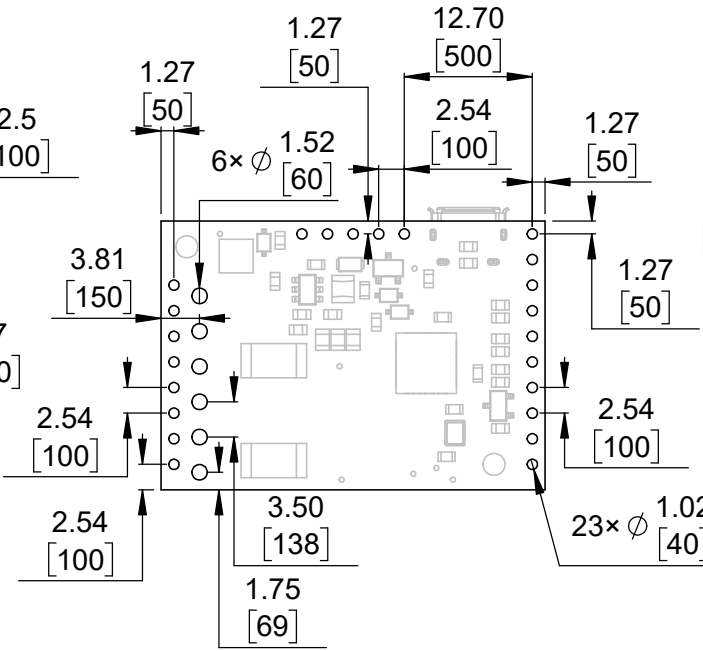
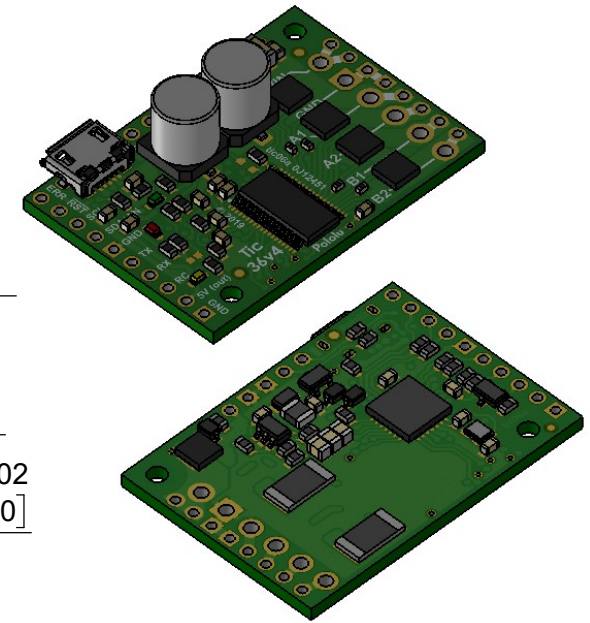


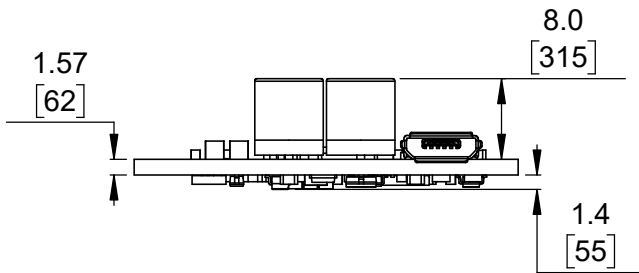
① Board dimensions (top view)  
Scale 4:3



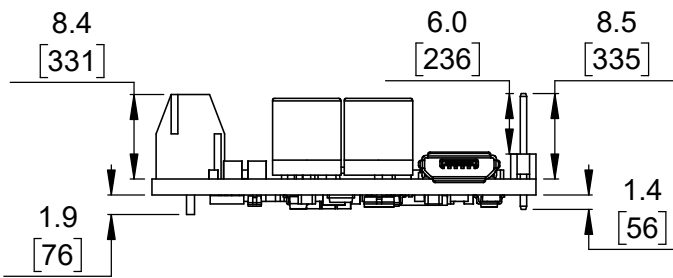
② Connector callouts (bottom view)  
Scale 4:3



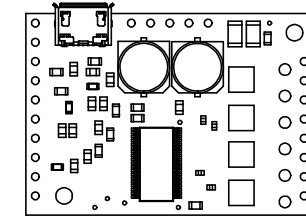
③ Isometric view  
Scale 4:3



④ Profile  
Scale 4:3




⑤ Profile (with through-hole connectors)  
Scale 4:3



⑥ Actual size  
Scale 1:1

- ①. Intended for #2 and M2 screws.
- ②. To get the specified scale, select 100% in print settings.
- ③. Drill location tolerance:  $\pm 0.1$  [ $\pm 5$ ].
- ④. Board edge tolerance:  $\pm 0.3$  [ $\pm 10$ ].

<https://www.pololu.com/product/3140>

Name: Tic 36v4 USB Multi-Interface High-Power Stepper Motor Controller		Item number: 3140, 3141
Drawing date: 20 September 2019	Dev code: tic06a	 <b>Pololu</b> Robotics & Electronics © 2019 Pololu Corporation
Units: mm [mil]	Material: mixed	