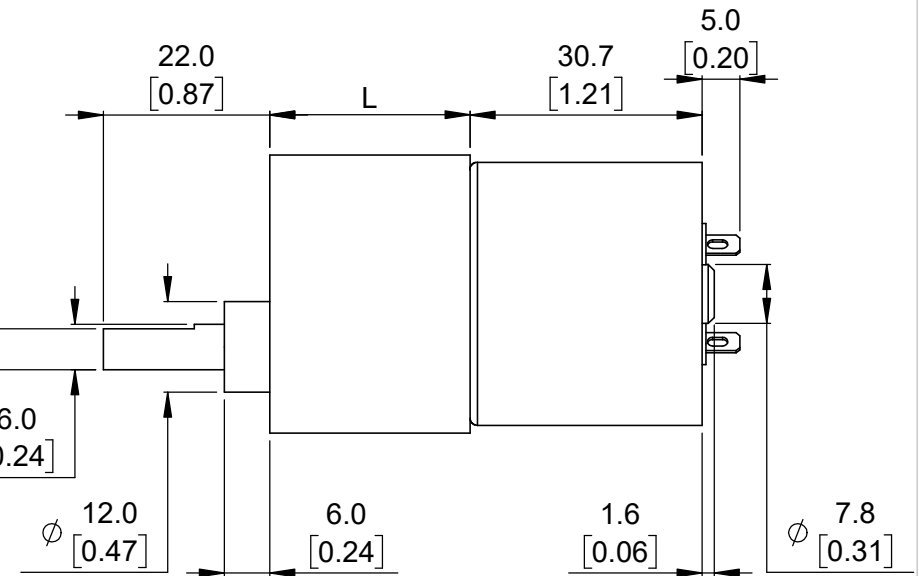
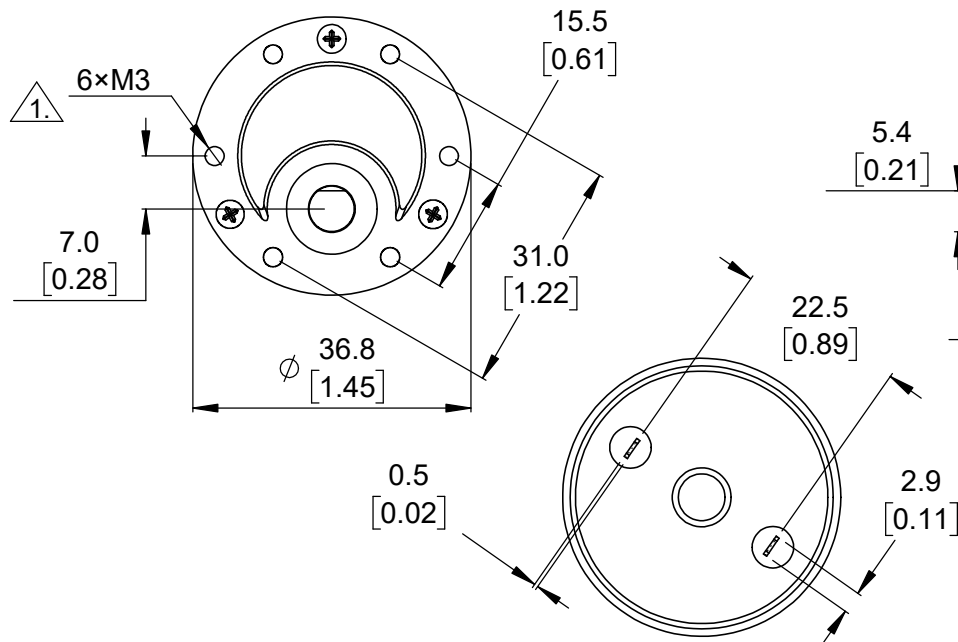
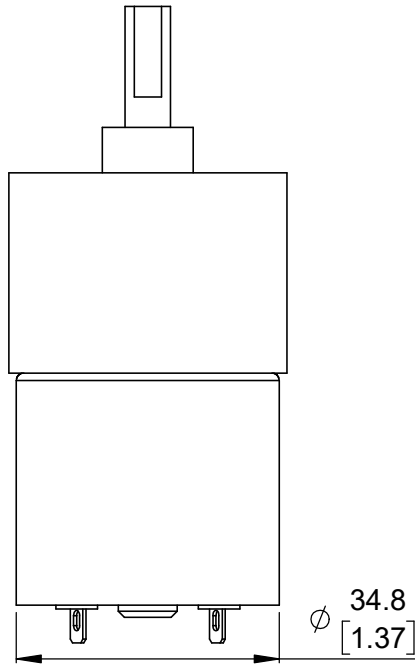
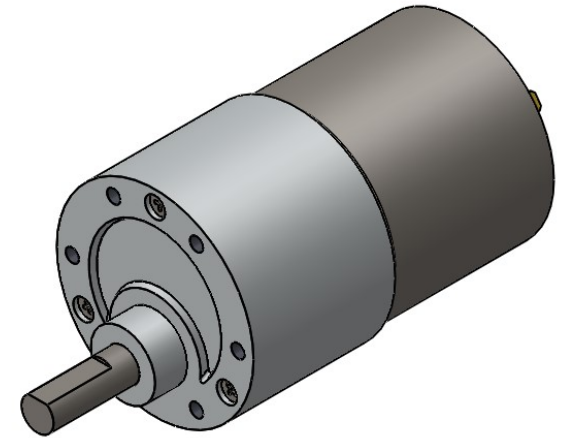


Gear ratio	L
19:1, 30:1	21.5 mm [0.87 in]
50:1, 70:1	24.0 mm [0.94 in]
100:1, 131:1, 150:1	26.5 mm [1.04 in]



1. Depth of mounting holes is 3.0 mm [0.12 in].

2. To get the specified scale, select 100% in print settings.

Scale: 1:1

<https://www.pololu.com/category/116/37d-mm-gearmotors>

Name:
37D mm Metal Gearmotors (without encoder)

Item number:
2829, 4741-4746

Drawing date:
09 August 2019

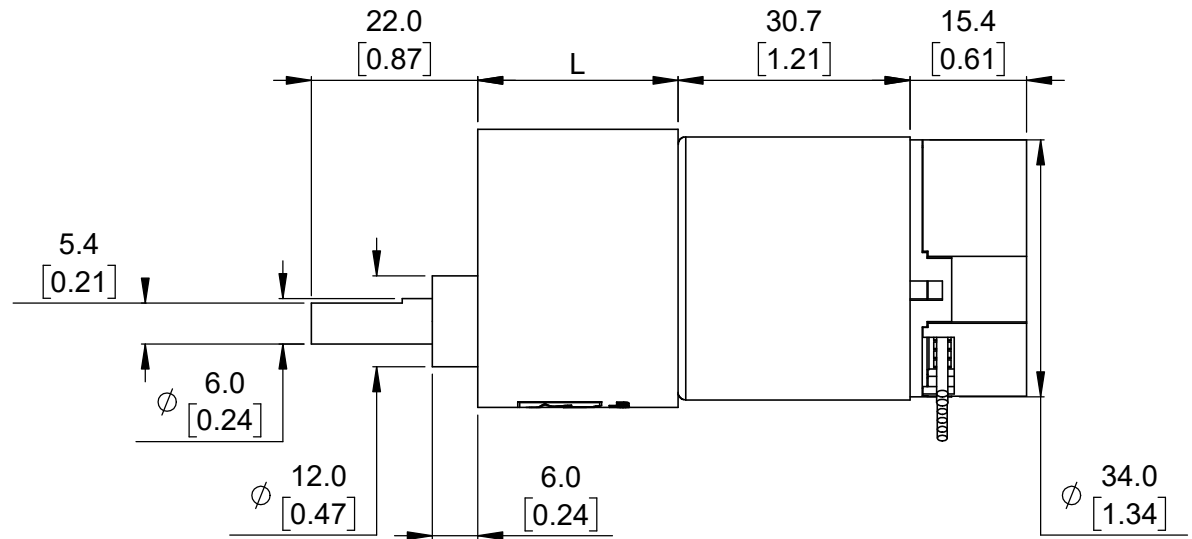
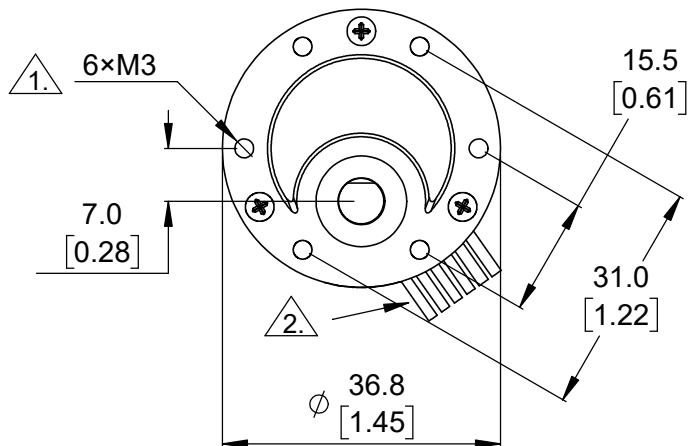
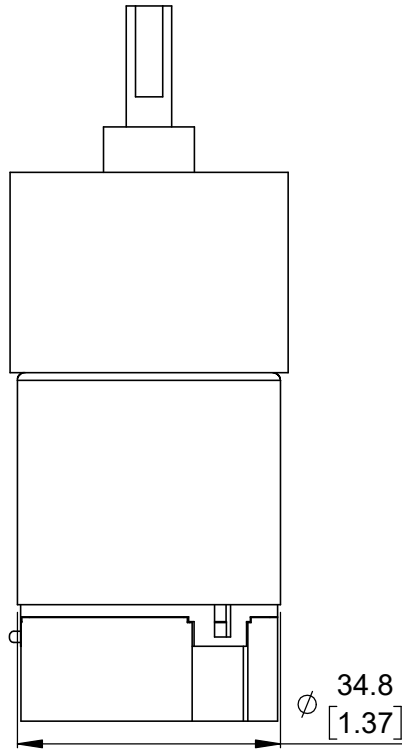
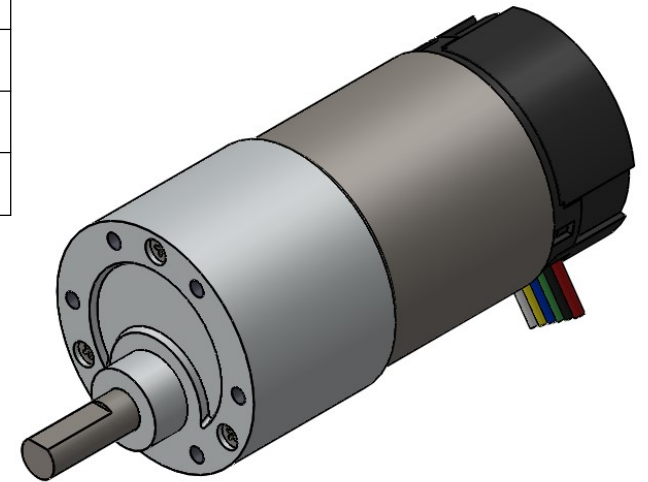
Dev code:
—

Units: mm [in]

Material:
Mixed


Pololu
Robotics & Electronics
© 2019 Pololu Corporation


Gear ratio	L
19:1, 30:1	21.5 mm [0.87 in]
50:1, 70:1	24.0 mm [0.94 in]
100:1, 131:1, 150:1	26.5 mm [1.04 in]

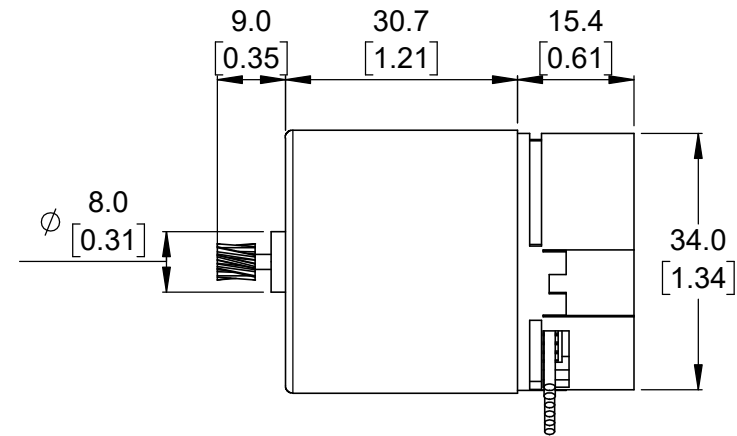
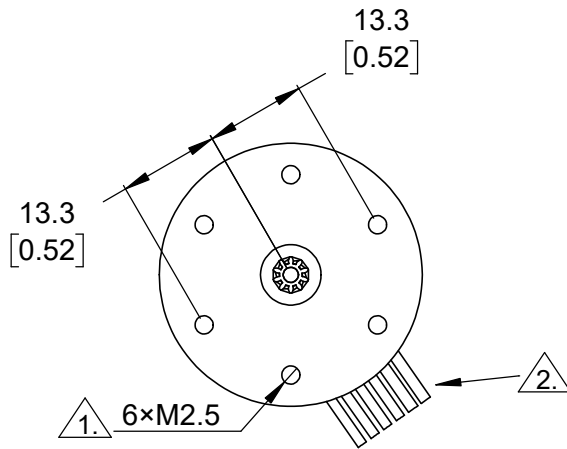
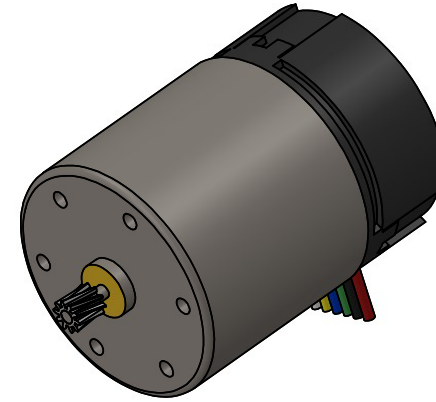
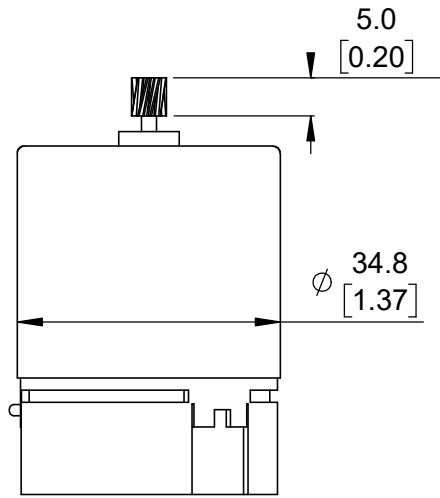


1. Depth of mounting holes is 3.0 mm [0.12 in]
2. Leads are approximately 200 mm [8 in] long and are terminated by a 1×6 female header with a 2.54 mm [0.1 in] pitch.
3. To get the specified scale, select 100% in print settings.

Scale: 1:1

<https://www.pololu.com/category/116/37d-mm-gearmotors>

Name: 37D mm Metal Gearmotors with 64 CPR Encoder		Item number: 2828, 4751-4756
Drawing date: 09 August 2019	Dev code: —	 Pololu Robotics & Electronics © 2019 Pololu Corporation
Units: mm [in]	Material: Mixed	



1. Depth of mounting holes is 3.5 mm [0.14 in].



2. Leads are approximately 200 mm [8 in] long and are terminated by a 1x6 female header with a 2.54 mm [0.1 in] pitch.

3. To get the specified scale, select 100% in print settings.

Scale 1:1

<https://www.pololu.com/product/4750>

Name:
Motor with 64 CPR Encoder for 37D
mm Metal Gearmotors (No Gearbox,
Helical Pinion)

Item number:
4750

Drawing date:
09 August 2019

Dev code:
—

Units: mm
[in]

Material:
Mixed


Pololu
Robotics & Electronics
© 2019 Pololu Corporation