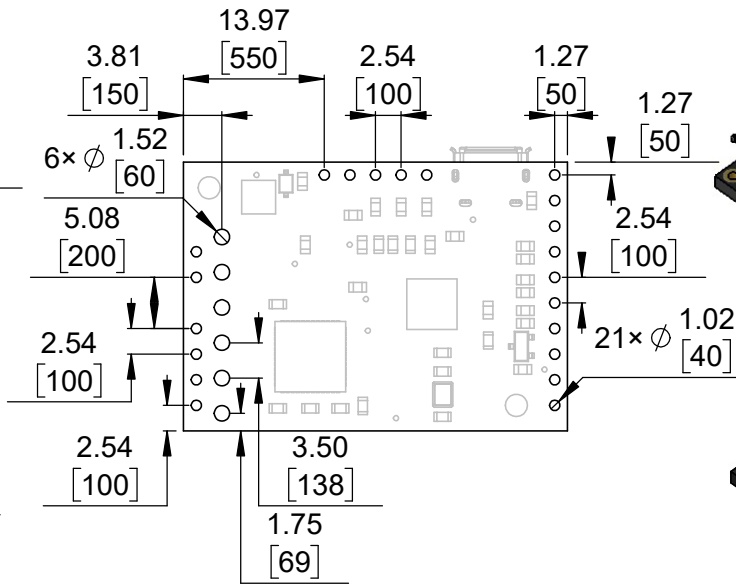
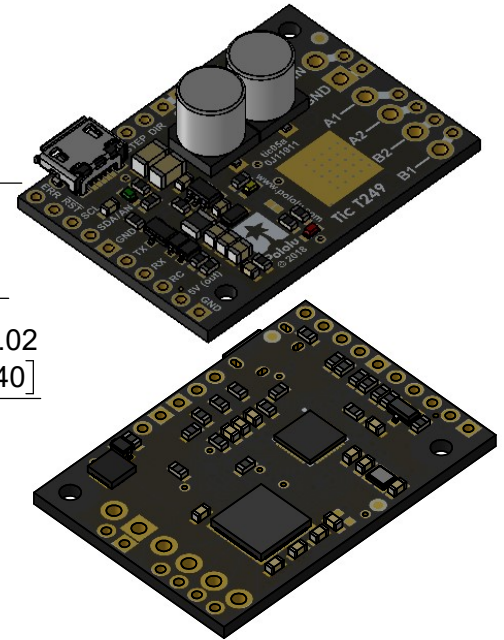


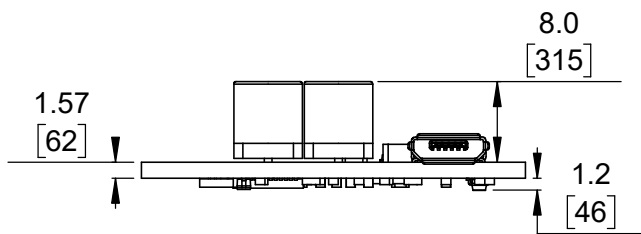
① Board dimensions (top view)
Scale 4:3



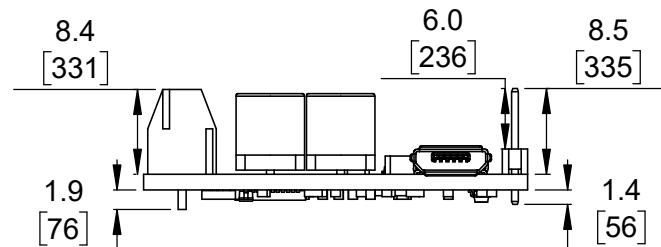
② Connector callouts (bottom view)
Scale 4:3



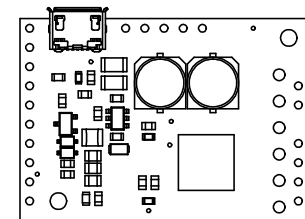
③ Isometric view
Scale 4:3



④ Profile
Scale 4:3




⑤ Profile (with through-hole connectors)
Scale 4:3



⑤ Actual size
Scale 1:1

- ①. Intended for #2 and M2 screws.
- ②. To get the specified scale, select 100% in print settings.
- ③. Drill location tolerance: ± 0.1 [± 5].
- ④. Board edge tolerance: ± 0.3 [± 10].

<https://www.pololu.com/product/3138>

Name: Tic T249 USB Multi-Interface Stepper Motor Controller		Item number: 3138, 3139
Drawing date: 15 January 2019	Dev code: tic05a	 Pololu Robotics & Electronics © 2019 Pololu Corporation
Units: mm [mil]	Material: mixed	