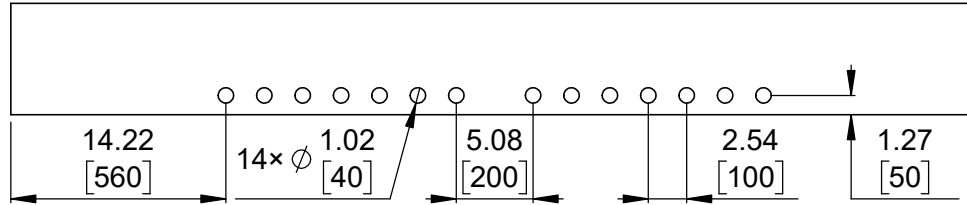
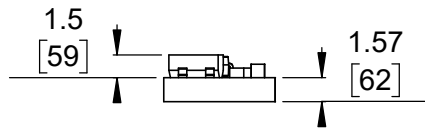


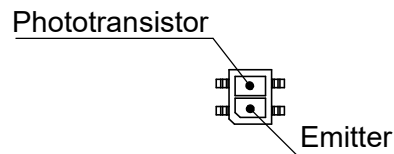
① Board dimensions (top view)
Scale 2:1



② Connector callouts (bottom view)
Scale 2:1



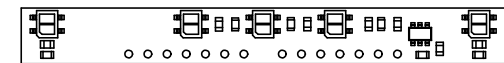
④ Profile
Scale 2:1



⑤ QTR sensor
Scale 2:1




③ Isometric view
Scale 2:1



⑥ Actual size
Scale 1:1

- To get the specified scale, select 100% in print settings.
- Drill location tolerance: ± 0.1 [± 5].
- Board edge tolerance: ± 0.3 [± 10].

<https://www.pololu.com/product/3577>

Name: 5-Channel Reflectance Sensor Array for Balboa 32U4 Balancing Robot		Item number: 3577
Drawing date: 14 September 2018	Dev code: irs13a	 Pololu Robotics & Electronics © 2018 Pololu Corporation
Units: mm [mil]	Material: mixed	