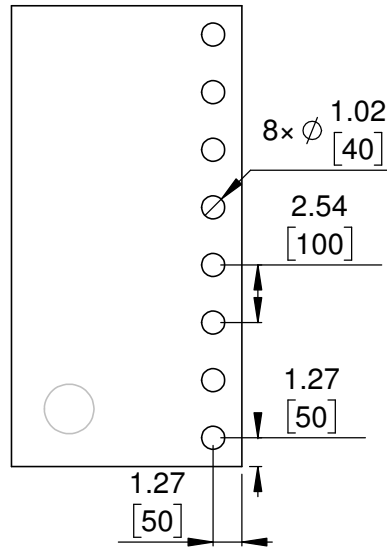
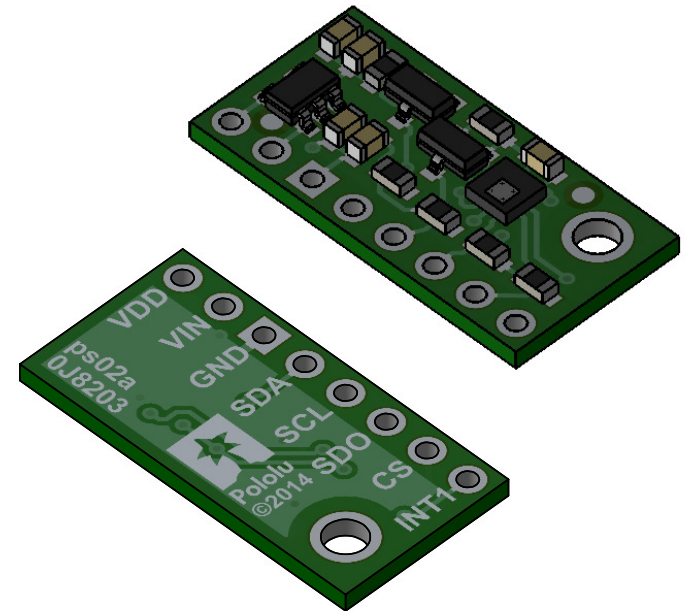


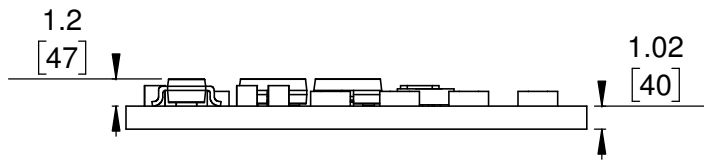
1 Board dimensions (top view)
Scale 3:1



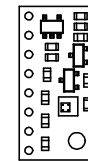
2 Connector callouts (bottom view)
Scale 3:1



3 Isometric view
Scale 3:1




4 Profile
Scale 3:1



5 Actual size
Scale 1:1

- 1. Intended for #2 and M2 screws.
- 2. To get the specified scale, select 100% in print settings.
- 3. Drill location tolerance: ± 0.1 [± 5].
- 4. Board edge tolerance: ± 0.3 [± 10].

<https://www.pololu.com/product/2867>

Name: LPS25HB Pressure/Altitude Sensor Carrier with Voltage Regulator		Item number: 2867
Drawing date: 14 September 2018	Dev code: ps02a	 Pololu Robotics & Electronics © 2018 Pololu Corporation
Units: mm [mil]	Material: mixed	