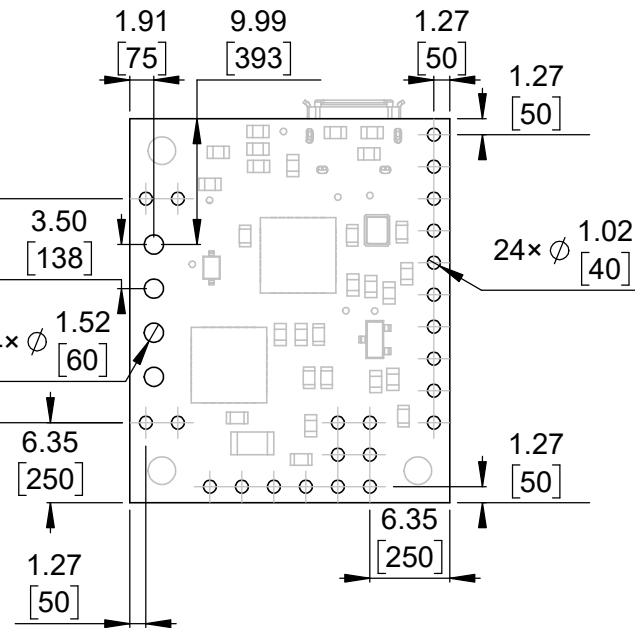
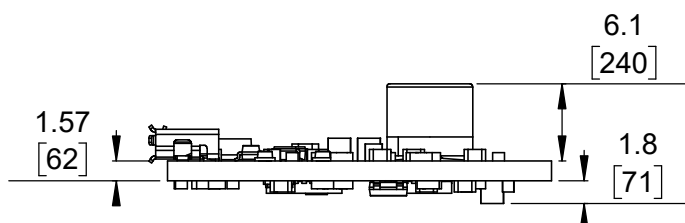


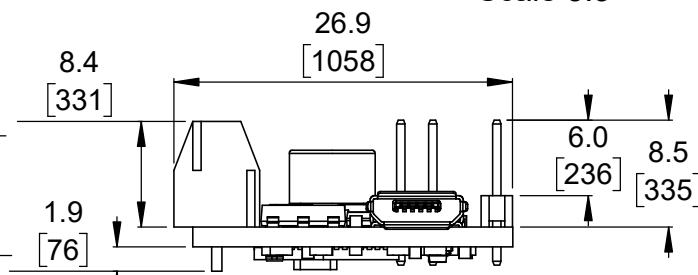
1 Board dimensions (top view)
Scale 5:3



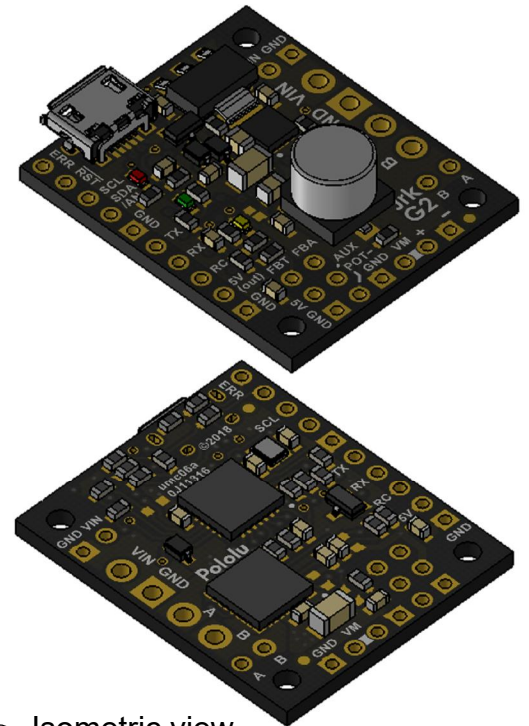
2 Connector callouts (bottom view)
Scale 5:3



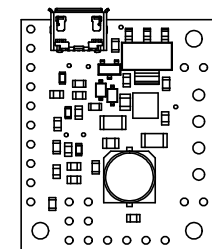
4 Profile
Scale 5:3



5 Profile (with through-hole connectors)
Scale 5:3




3 Isometric view
Scale 5:3



6 Actual size
Scale 1:1

- 1. Intended for #2 screws.
- 2. Grid lines indicate 2.54 mm [100 mil] spacing.
- 3. To get the specified scale, select 100% in print settings.
- 4. Drill location tolerance: ± 0.1 [± 5].
- 5. Board edge tolerance: ± 0.3 [± 10].

<https://www.pololu.com/product/3142>

Name: Jrk G2 21v3 USB Motor Controller with Feedback		Item number: 3142, 3143
Drawing date: 19 July 2018	Dev code: umc06a	 © 2018 Pololu Corporation
Units: mm [mil]	Material: mixed	